

**ATTORNEY GENERAL'S SUMMARY
OF CHARITABLE SOLICITATIONS
BY COMMERCIAL FUND-RAISERS**

**SUPPLEMENTAL REPORT: DONATIONS
OF PERSONAL PROPERTY
(THRIFT STORES, VEHICLE DONATION PROGRAMS, ETC.)
(Government Code § 12599)**



**BILL LOCKYER
Attorney General
State of California**

Year Ending 2000

ATTORNEY GENERAL'S SUMMARY
OF CHARITABLE SOLICITATION
BY COMMERCIAL FUND-RAISERS

SUPPLEMENTAL REPORT: DONATIONS OF PERSONAL PROPERTY
(THRIFT STORES, VEHICLE DONATION PROGRAMS, ETC.)
(Government Code § 12599)

TABLE OF CONTENTS

	PAGES
INTRODUCTION	1 - 4
SPECIFIC FINDINGS	5 - 6
2000 REPORTS CHART: PERCENTAGE TO CHARITY	
TABLE	PAGES
1 THRIFT STORE OPERATIONS – GOODS PURCHASED FROM CHARITY	1 - 4
2 THRIFT STORE OPERATIONS – MANAGEMENT FEE/COMMISSION	1
3 THRIFT STORE OPERATIONS– GOODS PURCHASED FROM CHARITY – INCOMPLETE REPORTS: FINANCIAL REPORTS RECEIVED BUT NOT ACCEPTED FOR FILING	1
4 THRIFT STORE OPERATIONS – MANAGEMENT FEE/COMMISSION – INCOMPLETE REPORTS: FINANCIAL REPORTS RECEIVED BUT NOT ACCEPTED FOR FILING	1
5 VEHICLE DONATION OPERATIONS – LISTING BY PERCENTAGE TO CHARITY	1-13
6 VEHICLE DONATION OPERATIONS – INCOMPLETE REPORTS: LISTING OF FINANCIAL REPORTS RECEIVED BUT NOT ACCEPTED FOR FILING	1- 13



1300 I STREET
P.O. BOX 903447
SACRAMENTO, CA 94203-4470
Public: (916) 445-2021
Facsimile: (916) 444-3651
E-Mail: <http://ag.ca.gov/charities/>

INTRODUCTION

Californians each year provide generous support to a wide array of charities, either directly or through commercial fund-raisers who are hired to solicit donations on behalf of the charity. This supplemental report on commercial fund-raising activities covers the donation of used personal property to charities and the resale of property by for-profit thrift stores, including the donation and resale of vehicles for the benefit of charity. In issuing the report, Attorney General Bill Lockyer seeks to provide information that may be used to critically evaluate charitable solicitation of used personal property.

By law, commercial fund-raisers are required to register and file annual financial disclosure reports with the Attorney General's Registry of Charitable Trusts. The data here covers the year 2000 activities that were reported by commercial fund-raisers in 2001.

Charities are encouraged to work with currently registered paid solicitors, have a written contract with terms important to the organization, and monitor commercial solicitations and all expenses associated with the charity's commercial fund-raising activities. Donors and potential donors are encouraged to resist high-pressure tactics, to ask for written information about the charity for which a solicitation is being made, including the nonprofit's name, address and telephone number, and how their donation will be distributed.

Historical figures show that a campaign conducted by a commercial fund-raiser returns, - commercial fund-raisers in 2000, as stated in reports they are required to file with the Attorney General.

On the attached Vehicle Donation Activities chart, the "Average Percent to Charity" shown for this and past years was obtained by taking the percentage of contributions returned to charity for each solicitation campaign, adding the individual percentages together, and dividing by the number of campaigns, thus obtaining the "percent to charity" for the average campaign. A second table shows overall revenue raised and overall revenue to charity. Calculation of the percentage of charitable contributions going to charity using these overall figures is skewed by a few individual campaigns with revenue figures that are very high in comparison to most campaigns. Because these overall figures do not yield a "percent to charity" that is reflective of the average campaign, they have not been used in calculating the "Average Percent to Charity."

THRIFT STORES

For-profit thrift stores selling used clothing or other donated goods for charity must file annual financial reports with the Attorney General's Registry of Charitable Trusts. Thrift stores, which handle what is known as "salvageable personal property" under state law, may be operated

directly by a charity or by for-profit vendors, who are considered to be commercial fund-raisers if they receive a management fee or commission from the charity or purchase a majority of their goods from charities or social welfare organizations at negotiated prices (Government Code Section 12599).

For-profit thrift store revenue and expenditure reports are available for public review on the Attorney General's web site (<http://ag.ca.gov/charities/>), at the Attorney General's Registry of Charitable Trusts in Sacramento, or at the reporting charity's principal office.

Charities that operate their own thrift stores incur overhead and other expenses of a retail store. After thrift store expenses are paid, the charities use their earnings for such things as management expenses and charitable program services. On the other hand, charities that solicit used items and sell them to for-profit vendors do not incur the expenses of operating retail stores. Charities that sell used goods to for-profit vendors may or may not earn more money than do charities that operate their own thrift stores. There are advantages and disadvantages to both types of operations.

This report contains specific information about charities that sell used items to for-profit vendors. There are two types of arrangements: vendors that receive management fees or commissions from the charities, and vendors that purchase the goods from the charities at negotiated prices. Each is reported separately. The data is taken directly from reports filed by commercial fund-raisers and has not been verified independently by the Attorney General's Office.

For-profit thrift store operators that purchased goods from charities reported total revenue of approximately \$39.98 million for the reporting period 2000. The average percent that was paid to charitable organizations was 15.7% .

For the same period, for-profit thrift store operators that were paid a fee or commission by charities reported total revenue of over \$3.9 million. Of that, the average percent that was paid to charitable organizations was 12.42%.

VEHICLE DONATION PROGRAMS

In California, the solicitation of vehicle donations to charity has increased during recent years. These solicitations result primarily in the donation of automobiles, and are administered both by charities in-house and by commercial fund-raisers who contract with charities to solicit on their behalf.

According to the financial statements filed by the commercial fund-raisers who solicit vehicle donations and were registered with the Attorney General's Registry of Charitable Trusts in 2000, such donations resulted in approximately \$30.69 million in gross proceeds. The average percent that was distributed to the charities was 34.72%. The remaining funds were retained by the fund-raisers for payment of expenses and fees.

The vehicle donation process usually begins when a donor responds to an advertising campaign. In the initial phone conversation, the donor will be asked questions about the vehicle. Usually the vehicle is accepted, unless the cost of towing exceeds the value of the vehicle.

Donors are responsible for notifying the Department of Motor Vehicles of the transfer of registration. Failure to transfer registration has subjected many donors to subsequent penalties and expenses for donated vehicles, most often accrued parking violations.

After the vehicle is picked up from the donor, the fund-raiser either arranges for resale of the vehicle to the public or sells it to a parts wholesaler, depending on the condition of the vehicle. A significant problem for purchasers of donated vehicles is the reliability of the resellers in warranting the condition of the vehicles. The majority of vehicles donated to charity are not in good condition. Unscrupulous resellers have sold vehicles that fail to operate soon after they are driven out of the sellers' lots. Because donated vehicles do not need to pass vehicle emissions tests at the time of donation, purchasers of donated vehicles should insist that they receive valid smog certificates from the reseller at time of purchase.

Donors of vehicles usually claim tax deductions for their donations. Advertising campaigns for vehicle donations sometimes explicitly promise "maximum tax donation" and "highest value." The actual amount that can be deducted is determined by the IRS, not the solicitor. According to the IRS, a taxpayer may deduct the fair market value of the donated vehicle. The IRS imposes further reporting and documentation requirements on donations of property. The Attorney General's Office has received complaints about tax deduction promises made by fund-raisers and their subsequent failure to provide documentation to donors. Donors are ultimately responsible for the deduction taken and may not rely on the representations contained in solicitations to support their income tax deductions.

California law requires a nonprofit organization engaged in any solicitation or sales solicitation for charitable purposes, or a commercial fund-raiser, to provide a donor of a motor vehicle, aircraft or vessel with a receipt within 90 days from date of donation (Business & Professions Code section 22930). The receipt must describe the donated property in terms of its model, age, condition, and level of use (including, but not limited to, the mileage, in the case of a vehicle), and whether a visual inspection by the nonprofit organization or commercial fund-raiser, or a representative of the nonprofit organization or commercial fund-raiser, indicated that there were any readily apparent defects that would materially reduce the value of the property. If the donated property is sold prior to the issuance of the receipt, the receipt shall also include all of the following: (1) the date the property was sold; (2) if the property was sold to a dismantler, the amount paid to the nonprofit organization or commercial fund-raiser for the property; and (3) if the property was altered subsequent to the donation and the alteration affected the value of the property, a statement that the property was altered and whether the alteration increased or decreased the value of the property.

The purpose of this report is not to discourage vehicle donations but to present some of the problems associated with vehicle donations and practical information, both for donors of vehicles and the purchasers of the vehicles.

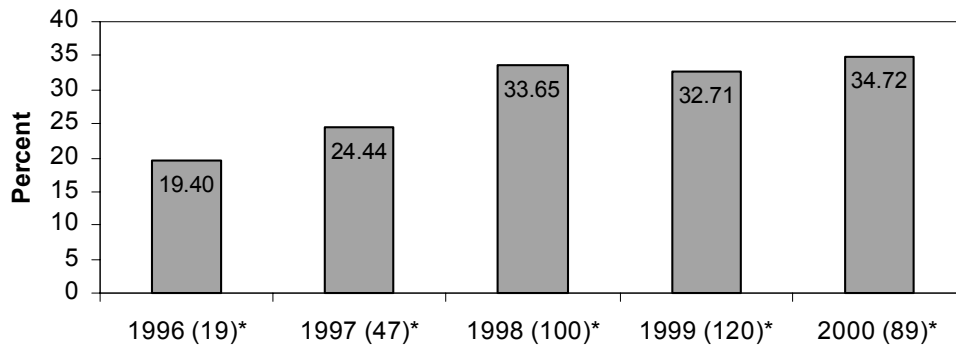
SPECIFIC FINDINGS

- Table #1 Thrift Store Operations - Goods Purchased from Charity.**
Lists each charitable organization that solicited donations of used clothing and merchandise (“salvageable personal property”) and sold the property to a for-profit thrift store. The for-profit thrift store operator is also listed. Each charitable organization is ranked by the percentage of money that actually went to the charity, i.e., from a high of 33.77% to a low of 0%.
- Table #2 Thrift Store Operations - Management Fee/Commission**
Lists each charitable organization that solicited donations of used clothing and merchandise and paid a management fee or commission to a for-profit thrift store operator. The for-profit thrift store operator is also listed. Each charitable organization is ranked by the percentage of total revenue that actually went to the charity, i.e., from a high of 15.0% to a low of 9.5%.
- Table #3 Thrift Store Operations - Cost of Goods Sold - Financial Reports Received But Not Accepted for Filing**
Lists commercial fund-raisers that operate vehicle donation programs that registered in 2000 and submitted financial reports that are not acceptable for filing. Financial reports must be signed by the commercial fund-raiser and also by two officers of the charity. In most cases the financial reports listed in this table are unacceptable because they have not been signed by the officers of the charities.
- Table #4 Thrift Store Operations - Management Fee/Commission - Financial Reports Received But Not Accepted for Filing**
Lists commercial fund-raisers that operate vehicle donation programs that registered in 2000 and submitted financial reports that are not acceptable for filing. Financial reports must be signed by the commercial fund-raiser and also by two officers of the charity. In most cases the financial reports listed in this table are unacceptable because they have not been signed by the officers of the charities.
- Table #5 Vehicle Donation Operations**
Lists each charitable organization that solicited vehicles and paid a management fee or commission to a for-profit reseller. Each charitable organization is ranked by the percentage of total revenue that actually went to the charity, i.e., from a high of 80.0% to a low of 3.29%.
- Table #4 Vehicle Donation Operations - Incomplete Reports**
Lists commercial fund-raisers that operate vehicle donation programs that registered in 2000 and submitted financial reports that are not acceptable for filing. Financial reports must be signed by the commercial fund-raiser and also by two officers of the charity. In most cases the financial reports listed in this table are unacceptable because they have not been signed by the officers of the charities.

Note: Some charities may be listed more than once. Each listing shows a separate for-profit thrift store or vehicle reseller operation.

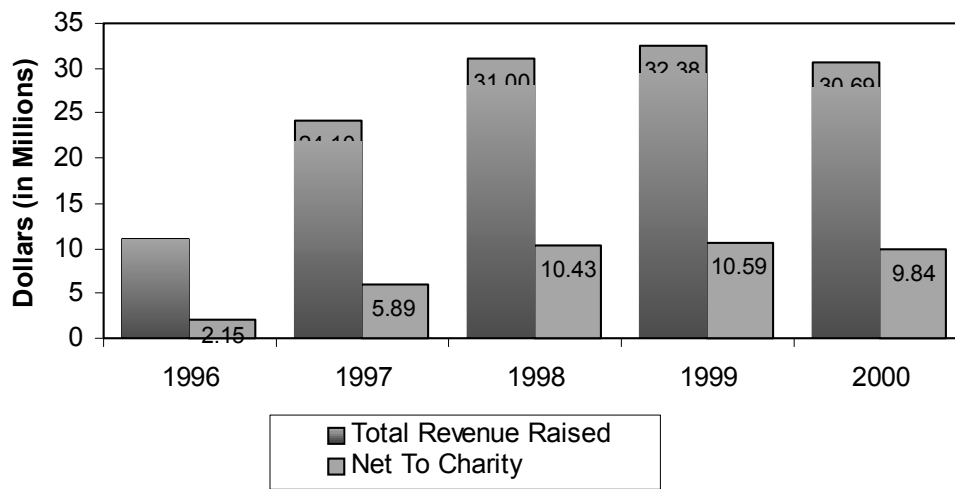
Commercial Fund-Raisers Vehicle Donation Activities 1996-2000

Average Percent to Charity



*Note: Number of campaigns

Revenue to Charity



2000

Table 1

Thrift Store Operations-Cost of Goods Purchased from Charity

Listing by Percentage to Charity

Charity/Charitable Purpose	Commercial Fund-raiser	T. Revenue	To Charity	%
SACRAMENTO ASSOCIATION FOR THE RETARDED, INC. 2100 21ST STREET SACRAMENTO CA 95818	NORQUIST SALVAGE CORPORATION 1400 ROLLINS ROAD BURLINGAME CA 94010	1,617,395.00	546,187.00	33.77
COMMUNITY ASSISTANCE FOR RETARDED HANDICAPPED, INC. 20513-17 ALAMEDA CASTRO VALLEY CA 94546	NORQUIST SALVAGE CORPORATION 1400 ROLLINS ROAD BURLINGAME CA 94010	2,176,257.00	708,714.00	32.57
SACRAMENTO ASSOCIATION FOR THE RETARDED 2100 21ST STREET SACRAMENTO CA 95818	NORQUIST SALVAGE CORPORATION 1400 ROLLINS ROAD BURLINGAME CA 94010	1,577,520.00	500,957.00	31.76
YOUTH INDUSTRY 1011 SHOTWELL STREET SAN FRANCISCO CA 94110	RADICAL RAG RESALE CORP. 85A GALLI DRIVE NOVATO CA 94949	2,122,452.00	652,148.00	30.73
ARC - SAN FRANCISCO 1500 HOWARD STREET SAN FRANCISCO CA 94103	NORQUIST SALVAGE CORPORATION 1400 ROLLINS ROAD BURLINGAME CA 94010	2,482,817.00	720,789.00	29.03
AMVETS DEPARTMENT OF CALIFORNIA 1213 S. DALE AVENUE ANAHEIM CA 92804	J. MANN, INC. 85A GALLI DRIVE NOVATO CA 94949	3,536,080.00	1,001,375.00	28.32
COMMUNITY ASSISTANCE FOR RETARDED HANDICAPPED, INC. 20513-17 ALAMEDA CASTRO VALLEY CA 94546	NORQUIST SALVAGE CORPORATION 1400 ROLLINS ROAD BURLINGAME CA 94010	2,480,721.00	666,155.00	26.85

Charity/Charitable Purpose	Commercial Fund-raiser	T. Revenue	To Charity	%
COMMUNITY ASSISTANCE FOR RETARDED HANDICAPPED (CARH) 20513-17 ALAMEDA CASTRO VALLEY CA 94601	NORQUIST SALVAGE CORPORATION 1400 ROLLINS ROAD BURLINGAME CA 94010	1,664,441.00	421,787.00	25.34
AMVETS DEPARTMENT OF CALIFORNIA SERVICE FOUNDATION 1212 S. DALE AVENUE ANAHEIM CA 92804	SOLANO RAG COMPANY, INC. 85A GALLI DRIVE NOVATO CA 94949	2,493,110.00	619,720.00	24.86
DISABLED AMERICAN VETERANS OF SAN JOAQUIN 42 N. SUTTER STREET STOCKTON CA 95202	GREG SALVAGE COMPANY, INC. 85A GALLI DRIVE NOVATO CA 94949	1,405,438.00	336,327.00	23.93
VIETNAM VETERANS OF AMERICA, INC. 8605 CAMERON STREET SILVER SPRING MD 20910	ATLAS MANAGEMENT ASSOCIATES, INC. 85A GALLI DRIVE NOVATO CA 94949	1,698,335.00	352,000.00	20.73
VIETNAM VETERANS OF AMERICA, INC. 8605 CAMERON STREET, SUITE 400 SILVER SPRING MD 20910	COMMUNITY THRIFT STORE P.O. BOX 1747 VENTURA CA 93002	2,727,645.00	376,164.00	13.79
UNITED CEREBRAL PALSY 35-325 DATA PALM DRIVE, SUITE 135 CATHEDRAL CITY CA 92234	CLYDE H. BAYNE, INC. 4343 MARKET STREET RIVERSIDE CA 92501	833,431.37	114,106.01	13.69
VIETNAM VETERANS OF AMERICA, INC. 8605 CAMERON STREET, SUITE 400 SILVER SPRING MD 20910	VALLEY THRIFT STORE, INC. P.O. BOX 1747 VENTURA CA 93002	3,574,115.00	403,053.00	11.28
INTERFACE CHILDREN FAMILY SERVICES 1305 DEL NORTE ROAD, SUITE 130 CAMARILLO CA 93010	PACIFIC THRIFT STORES MANAGEMENT 340 EAST MAIN STREET VENTURA CA 93001	426,123.73	45,000.00	10.56

Charity/Charitable Purpose	Commercial Fund-raiser	T. Revenue	To Charity	%
CIRCLE OF CONCERN P.O. BOX 98 DANA POINT CA 92629-0098	ARM ASSOCIATES, INC. P.O. BOX 7804 LONG BEACH CA 90807	892,741.00	44,427.00	4.98
BIG BROTHERS/BIG SISTERS SAN JOAQUIN STANILAUS MERCED 2100 PACIFIC AVENUE STOCKTON CA 95204	BUCEPHALUS ASSOCIATES, INC. 1502 ST. MARKS PLAZA, SUITE 8 & 9 STOCKTON CA 95207	1,273,417.00	60,000.00	4.71
CATALYST FOUNDATION FOR AIDS AWARENESS AND CARE 44758 ELM AVENUE LANCASTER CA 93534	CALIFORNIA THRIFT MANAGEMENT, INC. 8800 FOOTHILL BLVD. SUNLAND CA 91040	948,518.00	36,000.00	3.80
CATALYST FOUNDATION FOR AIDS AWARENESS AND CARE 44758 N. ELM AVENUE LANCASTER CA 93534	RUBA, INC. 2833 WEST AVENUE L LANCASTER CA 93536	609,695.26	19,500.00	3.20
NATIONAL FOUNDATION FOR THE TREATMENT OF ABUSED 5960 SOUTH LAND PARK DRIVE, SUITE 223 SACRAMENTO CA 95822	SACRAMENTO RESALE CO., LLC 5394 AUBURN BLVD. SACRAMENTO CA 95841	789,998.44	18,925.23	2.40
FIGHT CANCER NOW! P.O. BOX 2987 PALM DESERT CA 92261-2987	HARCOURT AND HARCOURT, INC. 154 SIXTH STREET COACHELLA CA 92236	1,842,398.00	12,462.00	0.68
STANFORD HOME FOR CHILDREN 3628 MADISON AVENUE, SUITE 7 NORTH HIGHLANDS CA 95660	ALEXANDER-FLYNN CO., INC. 6150 AUBURN BLVD. CITRUS HEIGHTS CA 95621-4725	419,500.00	-28,083.00	0.00
UNITED CEREBRAL PALSY 35-325 DATA PALM DRIVE, SUITE 135 CATHEDRAL CITY CA 92234	CLYDE H. BAYNE, INC. 4343 MARKET STREET RIVERSIDE CA 92501	326,844.65	-39,836.95	0.00

Charity/Charitable Purpose	Commercial Fund-raiser	T. Revenue	To Charity	%
COALITION TO END DOMESTIC & SEXUAL VIOLENCE 1030 N. VENTURA ROAD OXNARD CA 93030	THRIFT STORE CORPORATION, THE 270 EAST MAIN STREET VENTURA CA 93001	2,056,180.00	-44,063.00	0.00
Total Revenue, Amount to Charity, Average Percentage to Charity		39,975,173	7,543,813	15.7 %

2000

Table 2
Thrift Store Operations-Management Fees/Commission
(Charities Using For-profit Thrift Store Operator)
Listing by Percentage to Charity

Charity/Charitable Purpose	Commercial Fund-raiser	T. Revenue	To Charity	%
SADDLEBACK COMMUNITY OUTREACH 23011 MOULTON PARKWAY, B-12 LAGUNA HILLS CA 92653	SUSAN PHELPS 25381 ALICIA PARKWAY, SUITE 1 LAGUNA HILLS CA 92630	19,893.00	2,984.00	15.00
FOUNDATION FOR RETARDED CITIZENS OF VENTURA 5103 WALKER STREET VENTURA CA 93003	CHI ALPHA MANAGEMENT, INC. 940 EAST SANTA CLARA STREET VENTURA CA 93001	1,964,132.00	250,511.00	12.75
FOUNDATION FOR RETARDED CITIZENS OF VENTURA 5103 WALKER STREET VENTURA CA 93008	CHI ALPHA MANAGEMENT, INC. 940 EAST SANTA CLARA STREET VENTURA CA 93001	1,920,383.00	182,427.00	9.50
Total Revenue, To Charity, Average Percentage to Charity		3,904,408	435,922	12.42 %

2000

Table 3

Thrift Store Operations-Cost of Goods Sold
Financial Reports Received But Not Accepted for Filing
Listing by Percentage to Charity

Commercial Fund-raiser	Charity	Total Revenue	To Charity	%
CHI ALPHA MANAGEMENT, INC. 940 EAST SANTA CLARA STREET VENTURA CA 93001	SANTA MARIA ASSOCIATION FOR THE RETARDED FOUNDATION P.O. BOX 1187 SANTA MARIA CA 93454	906,616.00	87,525.00	9.65

2000

Table 4

Thrift Store Operations-Commissions
Financial Reports Received But Not Accepted for Filing
Listing by Percentage to Charity

Commercial Fund-raiser	Charity	Total Revenue	To Charity	%
SUSAN PHELPS 25381 ALICIA PARKWAY, SUITE 1 LAGUNA HILLS CA 92630	SADDLEBACK COMMUNITY OUTREACH 23011 MOULTON PARKWAY, B-12 LAGUNA HILLS CA 92653	19,893.00	2,984.00	15.00
CHI ALPHA MANAGEMENT, INC. 940 EAST SANTA CLARA STREET VENTURA CA 93001	FOUNDATION FOR RETARDED CITIZENS OF VENTURA 5103 WALKER STREET VENTURA CA 93003	1,964,132.	250,511.00	12.75
CHI ALPHA MANAGEMENT, INC. 940 EAST SANTA CLARA STREET VENTURA CA 93001	FOUNDATION FOR RETARDED CITIZENS OF VENTURA 5103 WALKER STREET VENTURA CA 93008	1,920,383.	182,427.00	9.50

2000
Table 5
Vehicle Donation Operations
Listed by Percentage to Charity

Charity/Charitable Purpose	Commercial Fund-raiser	T. Revenue	To Charity	%
BOOKS ALOUD, INC. P.O. BOX 5731 SAN JOSE CA 95150	PENNEY'S TOWING 699 THE ALAMEDA SAN JOSE CA 95126	7,000.00	5,600.00	80.00
SIERRA VISTA CHILDRENS CENTER 1400 K STREET, SUITE F MODESTO CA 95354	A.S.K. WHOLESALE 1918 PAULSON ROAD, SUITE 103 TURLOCK CA 95380	244,425.00	170,921.02	69.93
UCLA UNICAMP 65 DODD HALL; 405 HILGARD AVENUE LOS ANGELES CA 90095	CHARITY FUNDING SERVICES, INC. 16182 PACIFIC COAST HIGHWAY HUNTINGTON CA 92649	14,789.00	10,142.30	68.58
MCKINLEY CHILDREN'S CENTER 762 WEST CYPRESS STREET SAN DIMAS CA 91773-3599	CHARITY FUNDING SERVICES, INC. 16182 PACIFIC COAST HIGHWAY HUNTINGTON CA 92649	5,391.50	3,389.63	62.87
LIGA INTERNATIONAL 19531 CAMPUS DRIVE #320 SANTA ANA CA 92707	CHARITIES AUTOMOBILE RECYCLING ENTERPRISES, LLC 1301 EAST ORANGEWOOD AVENUE ANAHEIM CA 92805	2,660.00	1,593.00	59.89
RECORDING FOR THE BLIND & DYSLEXIC 488 WEST CHARLESTON BLVD. PALO ALTO CA 94306	CHARITY FUNDING SERVICES, INC. 16182 PACIFIC COAST HIGHWAY HUNTINGTON CA 92649	861.00	497.70	57.80
COMMUNITY HEALTH AWARENESS COUNCIL 711 CHURCH STREET MOUNTAIN VIEW CA 94042	PENNEY'S TOWING 699 THE ALAMEDA SAN JOSE CA 95126	17,680.00	10,005.00	56.59

2000
Table 5
Vehicle Donation Operations
Listed by Percentage to Charity

Charity/Charitable Purpose	Commercial Fund-raiser	T. Revenue	To Charity	%
NORTH SIDE THEATRE COUNCIL 848 WILLIAMS STREET SAN JOSE CA 95116	PENNEY'S TOWING 699 THE ALAMEDA SAN JOSE CA 95126	1,800.00	1,000.00	55.56
COMMUNITY SCHOOL OF MUSIC & ARTS 253 MARTENS AVENUE MOUNTAIN VIEW CA 94040	PENNEY'S TOWING 699 THE ALAMEDA SAN JOSE CA 95126	7,850.00	4,150.00	52.87
STAND! AGAINST DOMESTIC VIOLENCE P.O. BOX 6406 CONCORD CA 94524	ACCESS TOWING & RECOVERY 2330-63 BATES AVENUE CONCORD CA 94520	252,135.00	131,889.46	52.31
COMMUNITY VOLUNTEER SERVICES TO AGNEWS STATE HOSPITAL 1871 THE ALAMEDA #400 SAN JOSE CA 95126	PENNEY'S TOWING 699 THE ALAMEDA SAN JOSE CA 95126	3,000.00	1,500.00	50.00
MID-PENINSULA HOSPICE FOUNDATION 65 EL CAMINO REAL MENLO PARK CA 94025	PENNEY'S TOWING 699 THE ALAMEDA SAN JOSE CA 95126	37,745.00	17,990.00	47.66
ROBERT JAMES FRASCINO 779 ALTOS OAKS DRIVE #200 LOS ALTOS CA 94024	PENNEY'S TOWING 699 THE ALAMEDA SAN JOSE CA 95126	900.00	425.00	47.22
PARKINSONS INSTITUTE 1170 MORSE AVENUE SUNNYVALE CA 94039	PENNEY'S TOWING 699 THE ALAMEDA SAN JOSE CA 95126	24,120.00	11,370.00	47.14

2000
Table 5
Vehicle Donation Operations
Listed by Percentage to Charity

Charity/Charitable Purpose	Commercial Fund-raiser	T. Revenue	To Charity	%
CONVALESCENT HOSPITAL MINISTRY 65 W. RINCON AVENUE CAMPBELL CA 95008	PENNEY'S TOWING 699 THE ALAMEDA SAN JOSE CA 95126	10,150.00	4,775.00	47.04
ALZHEIMER'S ASSOCIATION 2065 W. EL CAMINO REAL #C MOUNTAIN VIEW CA 94040	PENNEY'S TOWING 699 THE ALAMEDA SAN JOSE CA 95126	123,410.00	58,005.00	47.00
COMMUNITY ASSOCIATION FOR REHABILITATION 525 E. CHARLESTON ROAD PALO ALTO CA 94306	PENNEY'S TOWING 699 THE ALAMEDA SAN JOSE CA 95126	128,293.00	59,940.00	46.72
AMERICAN RED CROSS - PALO ALTO AREA 400 MITCHELL LANE PALO ALTO CA 94301	PENNEY'S TOWING 699 THE ALAMEDA SAN JOSE CA 95126	69,215.00	32,107.00	46.39
BAY AREA LUPUS FOUNDATION 2635 NORTH FIRST STREET #206 SAN JOSE CA 95134	PENNEY'S TOWING 699 THE ALAMEDA SAN JOSE CA 95126	27,805.00	12,880.00	46.32
LEUKEMIA & LYMPHOMA SOCIETY 100 CORPORATION POINTE, SUITE 180 CULVER CITY CA 90230	CHARITIES AUTOMOBILE RECYCLING ENTERPRISES, LLC 1301 EAST ORANGEWOOD AVENUE ANAHEIM CA 92805	714,565.00	327,210.00	45.79
GREATER BAY AREA MAKE-A-WISH FOUNDATION 120 MONTGOMERY STREET, SUITE 1080 SAN FRANCISCO CA 94104-4313	CHARITY FUNDING SERVICES, INC. 16182 PACIFIC COAST HIGHWAY HUNTINGTON CA 92649	1,436,507.10	654,389.87	45.55

2000
Table 5
Vehicle Donation Operations
Listed by Percentage to Charity

Charity/Charitable Purpose	Commercial Fund-raiser	T. Revenue	To Charity	%
VANISHED CHILDRENS ALLIANCE 2095 PARK AVENUE SAN JOSE CA 95126	PENNEY'S TOWING 699 THE ALAMEDA SAN JOSE CA 95126	28,215.00	12,837.00	45.50
SACRAMENTO CHILDRENS HOME 2750 SUTTERVILLE ROAD SACRAMENTO CA 95820	YOUR DOUGHNATIONS 8650 ANTELOPE NORTH ROAD #C ANTELOPE CA 95843-3930	982,509.00	445,917.00	45.39
CITY YEAR FOUNDATION 116 PASEO DE SAN ANTONIO SAN JOSE CA 95112	PENNEY'S TOWING 699 THE ALAMEDA SAN JOSE CA 95126	17,925.00	8,110.00	45.24
FAR WEST WHEELCHAIR ATHLETICS ASSOCIATION 5730 CHAMBERTIN DRIVE SAN JOSE CA 95118	PENNEY'S TOWING 699 THE ALAMEDA SAN JOSE CA 95126	4,715.00	2,130.00	45.17
JUNIOR ACHIEVEMENT OF SANTA CLARA 3150 DE LA CRUZ BLVD. #3 SANTA CLARA CA 95054	PENNEY'S TOWING 699 THE ALAMEDA SAN JOSE CA 95126	20,968.00	9,440.00	45.02
LEUKEMIA & LYMPHOMA SOCIETY 1744 W. KATELLA AVENUE, SUITE 8 ORANGE CA 92867	CHARITIES AUTOMOBILE RECYCLING ENTERPRISES, LLC 1301 EAST ORANGEWOOD AVENUE ANAHEIM CA 92805	531,376.00	237,779.00	44.75
TRI-AEGIS RESIDENTIAL ONE WEST CAMPBELL AVENUE #D38 CAMPBELL CA 95008	PENNEY'S TOWING 699 THE ALAMEDA SAN JOSE CA 95126	2,280.00	1,020.00	44.74

2000
Table 5
Vehicle Donation Operations
Listed by Percentage to Charity

Charity/Charitable Purpose	Commercial Fund-raiser	T. Revenue	To Charity	%
UNITED WAY OF GREATER LOS ANGELES 523 WEST SIXTH STREET LOS ANGELES CA 90014	CHARITY FUNDING SERVICES, INC. 16182 PACIFIC COAST HIGHWAY HUNTINGTON CA 92649	463,019.96	203,112.35	43.87
ORANGE COUNTY'S UNITED WAY 18012 MITCHELL AVENUE SOUTH IRVINE CA 92614	CHARITY FUNDING SERVICES, INC. 16182 PACIFIC COAST HIGHWAY HUNTINGTON CA 92649	350,046.92	153,277.59	43.79
SERVICES FOR BRAIN INJURY 667 CHAPMAN STREET SAN JOSE CA 95126	PENNEY'S TOWING 699 THE ALAMEDA SAN JOSE CA 95126	400.00	175.00	43.75
NATIONAL KIDNEY FOUNDATION 553 PILGRIM DRIVE FOSTER CITY CA 94404	PENNEY'S TOWING 699 THE ALAMEDA SAN JOSE CA 95126	81,945.00	35,745.00	43.62
MULTIPLE SCHLEROSIS - O.C. 17500 REDHILL AVENUE, SUITE 240 IRVINE CA 92614	CHARITIES AUTOMOBILE RECYCLING ENTERPRISES, LLC 1301 EAST ORANGEWOOD AVENUE ANAHEIM CA 92805	255,434.00	111,326.00	43.58
AMBER FOUNDATION FOR MISSING CHILDREN P.O. BOX 565 PINOLE CA 94564	CHARITY FUNDING SERVICES, INC. 16182 PACIFIC COAST HIGHWAY HUNTINGTON CA 92649	37,222.50	15,970.32	42.91
ALZHEIMERS ASSOCIATION - RIVERSIDE 2930 E. INLAND EMPIRE BLVD., SUITE ONTARIO CA 91764	CHARITIES AUTOMOBILE RECYCLING ENTERPRISES, LLC 1301 EAST ORANGEWOOD AVENUE ANAHEIM CA 92805	270,657.00	115,177.00	42.55

2000
Table 5
Vehicle Donation Operations
Listed by Percentage to Charity

Charity/Charitable Purpose	Commercial Fund-raiser	T. Revenue	To Charity	%
ASTHMA & ALLERGY FOUNDATION OF AMERICA 5900 WILSHIRE BLVD., SUITE 2330 LOS ANGELES CA 90095	CHARITY FUNDING SERVICES, INC. 16182 PACIFIC COAST HIGHWAY HUNTINGTON CA 92649	501.00	213.00	42.51
STAR ACHIEVERS DOLLARS FOR SCHOLARS 12506 EAST YOSEMITE STREET CERRITOS CA 90703	CHARITY FUNDING SERVICES, INC. 16182 PACIFIC COAST HIGHWAY HUNTINGTON CA 92649	461.00	193.00	41.87
ALZHEIMER'S ASSOCIATION (SANTA CRUZ) P.O. BOX 2612 SANTA CRUZ CA 95063	PENNEY'S TOWING 699 THE ALAMEDA SAN JOSE CA 95126	600.00	250.00	41.67
CANCER FUND OF AMERICA 2901 BREEZEWOOD LANE KNOXVILLE TN 37921	VEHICLE DONATION PROCESSING CENTER, INC. 5406 DENTON PLACE OAKLAND CA 94619-3108	420,084.00	168,008.00	39.99
STANFORD HOME FOR CHILDREN P.O. BOX 418000 SACRAMENTO CA 95841	FUTURE FUNDRAISING 205 23RD STREET SACRAMENTO CA 95816-3067	1,003,124.02	401,154.18	39.99
CHILDREN'S WISH FOUNDATION INTERNATIONAL P.O. BOX 28785 ATLANTA GA 30358	VEHICLE DONATION PROCESSING CENTER, INC. 5406 DENTON PLACE OAKLAND CA 94619-3108	209,716.00	81,718.00	38.97
POLLY KLAAS FOUNDATION 312 WESTERN AVENUE PETALUMA CA 94952	VEHICLE DONATION PROCESSING CENTER, INC. 5406 DENTON PLACE OAKLAND CA 94619-3108	4,644,706.00	1,783,253.00	38.39

2000
Table 5
Vehicle Donation Operations
Listed by Percentage to Charity

Charity/Charitable Purpose	Commercial Fund-raiser	T. Revenue	To Charity	%
CALIFORNIA COUNCIL OF THE BLIND 578 B STREET HAYWARD CA 94541	VEHICLE DONATION PROCESSING CENTER, INC. 5406 DENTON PLACE OAKLAND CA 94619-3108	1,243,336.00	475,250.00	38.22
CONTACT CARE CENTER P.O. BOX 901 LAFAYETTE CA 94509-0901	ACCESS TOWING & RECOVERY 2330-63 BATES AVENUE CONCORD CA 94520	41,015.00	15,500.13	37.79
NATIONAL CHILDREN'S CANCER SOCIETY 1015 LOCUST BUILDING, SUITE 600 ST. LOUIS MO 63101	VEHICLE DONATION PROCESSING CENTER, INC. 5406 DENTON PLACE OAKLAND CA 94619-3108	304,952.00	113,448.00	37.20
CONTRA COSTA CHILD CARE COUNCIL 1035 DETROIT AVENUE, SUITE 2000 CONCORD CA 94518	ACCESS TOWING & RECOVERY 2330-63 BATES AVENUE CONCORD CA 94520	26,445.00	9,724.10	36.77
SUPPORT NETWORK FOR BATTERED WOMEN 444 CASTRO STREET, SUITE 305 MOUNTAIN VIEW CA 94041	CHARITY FUNDING SERVICES, INC. 16182 PACIFIC COAST HIGHWAY HUNTINGTON CA 92649	57,450.00	20,933.25	36.44
LIONS BLIND CENTER 3834 OPAL STREET OAKLAND CA 94609	RICHARD BOTTO & ASSOCIATES 575 C STREET, A HAYWARD CA 94541	222,228.00	80,766.00	36.34
POINT REYES NATIONAL SEASHORE ASSOCIATION BEAR VALLEY ROAD POINT REYES CA 94946	VEHICLE DONATION PROCESSING CENTER, INC. 5406 DENTON PLACE OAKLAND CA 94619-3108	250,481.00	90,793.00	36.25

2000
Table 5
Vehicle Donation Operations
Listed by Percentage to Charity

Charity/Charitable Purpose	Commercial Fund-raiser	T. Revenue	To Charity	%
AMERICAN RED CROSS 3150 E. 29TH STREET LONG BEACH CA 90806	DONATED PROPERTY SYSTEMS, INC. 14608 TITUS STREET VAN NUYS CA 91402	3,830,535.00	1,355,803.00	35.39
VOLUNTEER CENTER OF GREATER ORANGE COUNTY 1901 EAST FOURTH STREET, SUITE 100 SANTA ANA CA 92705	CHARITY FUNDING SERVICES, INC. 16182 PACIFIC COAST HIGHWAY HUNTINGTON CA 92649	461.00	163.00	35.36
ROSE REZNICK LIGHTHOUSE FOR THE BLIND 214 VAN NESS AVENUE SAN FRANCISCO CA 94102	CHARITY FUNDING SERVICES, INC. 16182 PACIFIC COAST HIGHWAY HUNTINGTON CA 92649	86,830.00	29,982.13	34.53
AMERICAN LUNG ASSOCIATION OF THE EAST BAY 295 27TH STREET OAKLAND CA 94612	ACCESS TOWING & RECOVERY 2330-63 BATES AVENUE CONCORD CA 94520	514,470.00	177,562.83	34.51
BIG BROTHERS & BIG SISTERS OF LA 3300 W. TEMPLE LOS ANGELES CA 90026	VEHICLE DONATION PROCESSING CENTER, INC. 5406 DENTON PLACE OAKLAND CA 94619-3108	58,596.00	19,446.00	33.19
SACRAMENTO COURT APPOINTED SPECIAL ADVOCATE PROGRAM P.O. BOX 278383 SACRAMENTO CA 95827-8383	FUTURE FUNDRAISING 205 23RD STREET SACRAMENTO CA 95816-3067	557.00	180.80	32.46
COURT APPOINTED SPECIAL ADVOCATES OF ORANGE COUNTY 431 THE CITY DRIVE ORANGE CA 92668	CHARITY FUNDING SERVICES, INC. 16182 PACIFIC COAST HIGHWAY HUNTINGTON CA 92649	1,350.00	436.10	32.30

2000
Table 5
Vehicle Donation Operations
Listed by Percentage to Charity

Charity/Charitable Purpose	Commercial Fund-raiser	T. Revenue	To Charity	%
HOPE HOSPICE 6500 DUBLIN BLVD., SUITE 100 DUBLIN CA 94568	VEHICLE DONATION PROCESSING CENTER, INC. 5406 DENTON PLACE OAKLAND CA 94619-3108	22,425.00	7,228.00	32.23
AGAPE VILLAGES, INC. 5700 STONERIDGE MALL, SUITE 225 PLEASANTON CA 94588	CAR PROGRAM LLC 3755 OMEC CIRCLE #4 RANCHO CA 95742	2,959,270.89	952,821.23	32.20
BLIND CHILDREN'S LEARNING CENTER 18542-B VANDERLIP AVENUE SANTA ANA CA 92705	CHARITY FUNDING SERVICES, INC. 16182 PACIFIC COAST HIGHWAY HUNTINGTON CA 92649	89,175.00	28,013.26	31.41
AMERICAN LUNG ASSOCIATION OF CALIFORNIA - REDWOOD EMPIRE 115 TALBOT AVENUE SANTA ROSA CA 95404	ACCESS TOWING & RECOVERY 2330-63 BATES AVENUE CONCORD CA 94520	107,701.00	32,116.63	29.82
MULTIPLE SCLEROSIS FOUNDATION, INC. 6350 NORTH ANDREWS AVENUE FT. LAUDERDALE FL 33309	VEHICLE DONATION PROCESSING CENTER, INC. 5406 DENTON PLACE OAKLAND CA 94619-3108	34,656.00	9,477.00	27.35
RIO LINDA ELVERTA LIBRARY FOUNDATION 1024 O STREET RIO LINDA CA 95673	DONATION STATION 6362 BLACKTOP ROAD #G RIO LINDA CA 95673	6,962.81	1,752.37	25.17
SEXUAL ASSAULT & DOMESTIC VIOLENCE CENTER 927 MAIN STREET WOODLAND CA 95695	DONATION STATION 6362 BLACKTOP ROAD #G RIO LINDA CA 95673	37,302.67	9,388.15	25.17

2000
Table 5
Vehicle Donation Operations
Listed by Percentage to Charity

Charity/Charitable Purpose	Commercial Fund-raiser	T. Revenue	To Charity	%
CROSSROADS TREATMENT CENTER 6060 SUNRISE VISTA DRIVE CITRUS HEIGHTS CA 95610	DONATION STATION 6362 BLACKTOP ROAD #G RIO LINDA CA 95673	18,805.33	4,732.82	25.17
ARTHRITIS FOUNDATION - LOS ANGELES 4311 WILSHIRE BLVD., SUITE 530 LOS ANGELES CA 90010	CHARITIES AUTOMOBILE RECYCLING ENTERPRISES, LLC 1301 EAST ORANGEWOOD AVENUE ANAHEIM CA 92805	1,016,216.00	251,694.00	24.77
BIG BROTHERS BIG SISTERS 900 FULTON AVENUE, SUITE 210 SACRAMENTO CA 95825	FUTURE FUNDRAISING 205 23RD STREET SACRAMENTO CA 95816-3067	38,387.56	9,013.83	23.48
JEWISH NATIONAL FUND (KEREN KAYEMETH LEISRAEL), INC. 6310 SAN VICENTE BLVD., SUITE 200 LOS ANGELES CA 90048	THE O.N.N.E. CORP 20300 S. VERMONT AVENUE, SUITE 225 TORRANCE CA 90502	95,740.00	19,148.00	20.00
MARY MAGDALENE PROJECT 3300 LIBERTY BLVD. SOUTH GATE CA 90280	THE O.N.N.E. CORP 20300 S. VERMONT AVENUE, SUITE 225 TORRANCE CA 90502	101,622.00	20,324.00	20.00
NATIONAL FOUNDATION FOR THE TREATMENT OF ABUSED 5960 S. LAND PARK DRIVE PMB 223 SACRAMENTO CA 95822	G.A. CORP, THE 2183 BENITA DRIVE RANCHO CA 95670	72,207.85	13,596.50	18.83
AIDS PROJECT LOS ANGELES 1313 N. VINE STREET LOS ANGELES CA 90028	THE O.N.N.E. CORP 20300 S. VERMONT AVENUE, SUITE 225 TORRANCE CA 90502	468,766.00	81,621.00	17.41

2000
Table 5
Vehicle Donation Operations
Listed by Percentage to Charity

Charity/Charitable Purpose	Commercial Fund-raiser	T. Revenue	To Charity	%
ARTHRITIS FOUNDATION - NEVADA 4311 WILSHIRE BLVD., SUITE 530 LOS ANGELES CA 90010	CHARITIES AUTOMOBILE RECYCLING ENTERPRISES, LLC 1301 EAST ORANGEWOOD AVENUE ANAHEIM CA 92805	158,747.00	24,706.00	15.56
STAND UP FOR KIDS P.O. BOX 121 CHULA VISTA CA 91912	THE O.N.N.E. CORP 20300 S. VERMONT AVENUE, SUITE 225 TORRANCE CA 90502	281,867.00	42,784.00	15.18
BIG BROTHERS / BIG SISTERS 14131 YORBA STREET, SUITE 200 TUSTIN CA 92780	CHARITIES AUTOMOBILE RECYCLING ENTERPRISES, LLC 1301 EAST ORANGEWOOD AVENUE ANAHEIM CA 92805	4,917.00	744.00	15.13
JOHN DOUGLAS FRENCH ALZHEIMERS FOUNDATION 11620 WILSHIRE BLVD., SUITE 270 LOS ANGELES CA 90025	THE O.N.N.E. CORP 20300 S. VERMONT AVENUE, SUITE 225 TORRANCE CA 90502	1,439,167.00	191,305.00	13.29
MARY MAGDALENE PROJECT P.O. BOX 8396 VAN NUYS CA 91409	CHARITIES AUTOMOBILE RECYCLING ENTERPRISES, LLC 1301 EAST ORANGEWOOD AVENUE ANAHEIM CA 92805	33,621.00	4,191.00	12.47
JEWISH COMMUNITY CENTERS 5700 WILSHIRE BLVD., SUITE 2705 LOS ANGELES CA 90036	THE O.N.N.E. CORP 20300 S. VERMONT AVENUE, SUITE 225 TORRANCE CA 90502	177,027.00	21,688.00	12.25
AIDS HEALTHCARE FOUNDATION 6255 W. SUNSET BLVD., 21ST FLOOR LOS ANGELES CA 90028	THE O.N.N.E. CORP 20300 S. VERMONT AVENUE, SUITE 225 TORRANCE CA 90502	457,259.00	54,871.00	12.00

2000
Table 5
Vehicle Donation Operations
Listed by Percentage to Charity

Charity/Charitable Purpose	Commercial Fund-raiser	T. Revenue	To Charity	%
BIG BROTHERS OF GREATER LOS ANGELES 1486 COLORADO BLVD. LOS ANGELES CA 90041	THE O.N.N.E. CORP 20300 S. VERMONT AVENUE, SUITE 225 TORRANCE CA 90502	496,444.00	59,573.00	12.00
LOS ANGELES YOUTH SUPPORTIVE SERVICES, INC. 8111 BEVERLY BLVD., SUITE 201 HOLLYWOOD CA 90048	THE O.N.N.E. CORP 20300 S. VERMONT AVENUE, SUITE 225 TORRANCE CA 90502	561,212.00	67,345.00	12.00
SOUTHERN CALIFORNIA CHAPTER OF THE ARTHRITIS FOUNDATION 4311 WILSHIRE BLVD., SUITE 530 LOS ANGELES CA 90010	THE O.N.N.E. CORP 20300 S. VERMONT AVENUE, SUITE 225 TORRANCE CA 90502	151,985.00	18,238.00	12.00
PHILIPPINE CHILDREN'S CHARITY 55 MONTGOMERY, SUITE 606 SAN FRANCISCO CA 94105	CHARITY FUNDING SERVICES, INC. 16182 PACIFIC COAST HIGHWAY HUNTINGTON CA 92649	146.00	15.00	10.27
DAVIS RESEARCH FOUNDATION 1601 BAYSHORE HIGHWAY, SUITE 245 BURLINGAME CA 94010	CAR PROGRAM LLC 3755 OMEC CIRCLE #4 RANCHO CA 95742	26,930.50	2,693.05	10.00
SIERRA ADOPTION SERVICES 8928 VOLUNTEER LANE #240 SACRAMENTO CA 95826	CAR PROGRAM LLC 3755 OMEC CIRCLE #4 RANCHO CA 95742	256,637.33	25,663.73	10.00
BIG BROTHERS 1486 COLORADO BLVD. LOS ANGELES CA 90041	CHARITIES AUTOMOBILE RECYCLING ENTERPRISES, LLC 1301 EAST ORANGEWOOD AVENUE ANAHEIM CA 92805	33,798.00	3,317.00	9.81

2000
Table 5
Vehicle Donation Operations
Listed by Percentage to Charity

Charity/Charitable Purpose	Commercial Fund-raiser	T. Revenue	To Charity	%
SHILOH INTERNATIONAL MINISTRIES 2507 D STREET LA VERNE CA 91750-4419	PACIFIC FUNDING GROUP 5840 GEARY BLVD., SUITE 101 SAN FRANCISCO CA 94121	78,686.00	7,000.00	8.90
AMERICAN INSTITUTE OF MARINE SCIENCE, INC. 11985 CANERIDGE ROAD SAN DIEGO CA 92128	CALIFORNIA FOUNDATION FUNDING COMPANY 2240 SHELTER ISLAND DRIVE, SUITE 210 SAN DIEGO CA 92106	1,853,680.00	155,172.00	8.37
SHILOH INTERNATIONAL MINISTRIES 2507 D STREET LA VERNE CA 91750-4419	STERLING STAR GROUP 5840 GEARY BLVD. #101 SAN FRANCISCO CA 94121	166,305.00	10,000.00	6.01
CHILDREN FIRST FOUNDATION P.O. BOX 221801 SACRAMENTO CA 95822	AUTOS PLUS DONATION PROGRAM P.O. BOX 246374 SACRAMENTO CA 95824-6374	204,373.59	10,275.00	5.03
KIDS IN DEVELOPMENT SOCIETY 2107 VAN NESS, SUITE 102 SAN FRANCISCO CA 94109	MAGELLAN ASSOCIATES, INC. 3254 19TH STREET SAN FRANCISCO CA 94110	147,308.00	4,850.00	3.29
Total Revenue, Amount to Charity, Average Percentage to Charity		30,694,262	9,841,931	34.72 %

**2000
TABLE 6**

**Automobile Donations-Financial Reports Received but not Accepted for Filing
Listed by Percentage to Charity**

Commercial Fund-raiser	Charity	Total Revenue	To Charity	%
DONATED PROPERTY SYSTEMS, INC. 14608 TITUS STREET VAN NUYS CA 91402	RECORDING FOR THE BLIND AND DYSLEXIC 5022 HOLLYWOOD BLVD. LOS ANGELES CA 90027	215.00	215.00	100.00
PENNEY'S TOWING 699 THE ALAMEDA SAN JOSE CA 95126	POSITIVE GRANDPARENTING 5652 SUNFLOWER LANE SAN JOSE CA 95118	200.00	200.00	100.00
DONATED PROPERTY SYSTEMS, INC. 14608 TITUS STREET VAN NUYS CA 91402	FULLERTON ROTARY FOUNDATION P.O. BOX 172 FULLERTON CA 92832	4,650.00	3,885.00	83.55
DONATED PROPERTY SYSTEMS, INC. 14608 TITUS STREET VAN NUYS CA 91402	SOUTH COAST CHRISTIAN ASSEMBLY 31501 AVENIDA LOS CERRITOS SAN JUAN CA 92675	4,145.66	3,432.16	82.79
DONATED PROPERTY SYSTEMS, INC. 14608 TITUS STREET VAN NUYS CA 91402	CARE GIVERS 2021 SPERRY AVENUE #47 VENTURA CA 93003	4,125.00	3,339.50	80.96
DONATED PROPERTY SYSTEMS, INC. 14608 TITUS STREET VAN NUYS CA 91402	LYMPHOMA RESEARCH FOUNDATION OF AMERICA 8800 VENICE BLVD. #207 LOS ANGELES CA 90034	20,882.50	16,330.46	78.20
DONATED PROPERTY SYSTEMS, INC. 14608 TITUS STREET VAN NUYS CA 91402	QUALITY CARE HEALTH FOUNDATION P.O. BOX 537004 SACRAMENTO CA 95853	3,785.00	2,736.50	72.30
DONATED PROPERTY SYSTEMS, INC. 14608 TITUS STREET VAN NUYS CA 91402	ST. EUPHRASIA CHURCH 11766 SHOSHONE AVENUE GRANADA HILLS CA 91344	10,230.00	7,352.25	71.87

**2000
TABLE 6**

**Automobile Donations-Financial Reports Received but not Accepted for Filing
Listed by Percentage to Charity**

Commercial Fund-raiser	Charity	Total Revenue	To Charity	%
CHARITIES AUTOMOBILE RECYCLING ENTERPRISES, 1301 EAST ORANGEWOOD AVENUE ANAHEIM CA 92805	NATIONAL MULTIPLE SCHLEROSIS SOCIETY - LA 2440 S. SEPULVEDA BLVD., SUITE 115 LOS ANGELES CA 90064	10,390.00	7,254.00	69.82
DONATED PROPERTY SYSTEMS, INC. 14608 TITUS STREET VAN NUYS CA 91402	SHARK P.O. BOX 28 GENEVA IL 60134	3,000.00	2,083.00	69.43
DONATED PROPERTY SYSTEMS, INC. 14608 TITUS STREET VAN NUYS CA 91402	JEWISH FAMILY SERVICE SANTA MONICA 1424 4TH STREET #303 SANTA MONICA CA 90401	163,152.96	110,530.83	67.75
DONATED PROPERTY SYSTEMS, INC. 14608 TITUS STREET VAN NUYS CA 91402	BRITTANY FOUNDATION P.O. BOX 9334 CANOGA PARK CA 91309	3,558.01	2,386.51	67.07
DONATED PROPERTY SYSTEMS, INC. 14608 TITUS STREET VAN NUYS CA 91402	CHURCH WORLD SERVICES P.O. BOX 968 ELKHART IN 46515	2,700.00	1,778.00	65.85
DONATED PROPERTY SYSTEMS, INC. 14608 TITUS STREET VAN NUYS CA 91402	CORONA HERITAGE FOUNDATION 510 W. FOOTHILL PARKWAY CORONA CA 92882	4,150.00	2,674.45	64.44
DONATED PROPERTY SYSTEMS, INC. 14608 TITUS STREET VAN NUYS CA 91402	RAINBOW SERVICES P.O. BOX 627 SAN PEDRO CA 90733	7,772.50	4,952.04	63.71
DONATED PROPERTY SYSTEMS, INC. 14608 TITUS STREET VAN NUYS CA 91402	ST. KILLIAN CHURCH 26872 ESTANCIERO DRIVE MISSION VIEJO CA 92691	11,295.00	7,059.00	62.50

**2000
TABLE 6**

**Automobile Donations-Financial Reports Received but not Accepted for Filing
Listed by Percentage to Charity**

Commercial Fund-raiser	Charity	Total Revenue	To Charity	%
DONATED PROPERTY SYSTEMS, INC. 14608 TITUS STREET VAN NUYS CA 91402	STARLIGHT CHILDREN'S FOUNDATION 2049 CENTURY PARK EAST #4320 LOS ANGELES CA 90067	9,000.00	5,503.75	61.15
DONATED PROPERTY SYSTEMS, INC. 14608 TITUS STREET VAN NUYS CA 91402	HAMBURGER HOME 1701 CAMINO PALMERO LOS ANGELES CA 90046	24,140.00	14,759.40	61.14
DONATED PROPERTY SYSTEMS, INC. 14608 TITUS STREET VAN NUYS CA 91402	FIRST PRESBYTERIAN CHURCH NORTH HOLLYWOOD 5000 COLFAX AVENUE NORTH CA 91601	2,320.00	1,387.00	59.78
DONATED PROPERTY SYSTEMS, INC. 14608 TITUS STREET VAN NUYS CA 91402	BUILDING UP LOS ANGELES / L.A. CONSERVATION CO. 1010 S. FLOWER STREET #211 LOS ANGELES CA 90015	1,350.00	792.40	58.70
DONATED PROPERTY SYSTEMS, INC. 14608 TITUS STREET VAN NUYS CA 91402	JEWISH BIG BROTHERS ASSOCIATION OF LOS ANGELES 6505 WILSHIRE BLVD. #600 LOS ANGELES CA 90048	58,656.50	34,145.77	58.21
DONATED PROPERTY SYSTEMS, INC. 14608 TITUS STREET VAN NUYS CA 91402	Y.W.C.A. PASADENA - FOOTHILL VALLEY 939 E. WALNUT STREET #100 PASADENA CA 91108	3,500.00	1,917.61	54.79
DONATED PROPERTY SYSTEMS, INC. 14608 TITUS STREET VAN NUYS CA 91402	PARKINSON'S RESOURCE ORGANIZATION 74-090 EL PASEO #102 PALM DESERT CA 92260	950.00	513.10	54.01
PENNEY'S TOWING 699 THE ALAMEDA SAN JOSE CA 95126	YWCA OF MID-PENINSULA 4161 ALMA STREET PALO ALTO CA 94306	2,800.00	1,500.00	53.57

**2000
TABLE 6**

**Automobile Donations-Financial Reports Received but not Accepted for Filing
Listed by Percentage to Charity**

Commercial Fund-raiser	Charity	Total Revenue	To Charity	%
DONATED PROPERTY SYSTEMS, INC. 14608 TITUS STREET VAN NUYS CA 91402	ALIVE AND WELL 540 W. BROADWAY GLENDALE CA 91204	780.00	412.65	52.90
CHARITIES AUTOMOBILE RECYCLING ENTERPRISES, 1301 EAST ORANGEWOOD AVENUE ANAHEIM CA 92805	A CHARITABLE ENDEAVOR 6433 TOPANGA CANYON BLVD. #225 CANOGA PARK CA 91303	4,095.00	2,140.00	52.26
DONATED PROPERTY SYSTEMS, INC. 14608 TITUS STREET VAN NUYS CA 91402	UNION RESCUE MISSION 545 S. SAN PEDRO STREET LOS ANGELES CA 90013	335,696.19	174,295.32	51.92
DONATED PROPERTY SYSTEMS, INC. 14608 TITUS STREET VAN NUYS CA 91402	LONG BEACH CHAMBER OF COMMERCE P.O. BOX 32252 LONG BEACH CA 90832	787.50	408.10	51.82
DONATED PROPERTY SYSTEMS, INC. 14608 TITUS STREET VAN NUYS CA 91402	AGAPE INTERNATIONAL CENTER OF TRUTH 5700 BUCKINGHAM PARKWAY CULVER CITY CA 90230	325.00	165.50	50.92
DONATED PROPERTY SYSTEMS, INC. 14608 TITUS STREET VAN NUYS CA 91402	MINORITY AIDS PROJECT 5149 W. JEFFERSON BLVD. LOS ANGELES CA 90016	15,022.50	7,565.93	50.36
DONATED PROPERTY SYSTEMS, INC. 14608 TITUS STREET VAN NUYS CA 91402	THE WELLNESS COMMUNITY 530 HAMPSHIRE ROAD WESTLAKE CA 91361	2,945.00	1,474.56	50.07
PENNEY'S TOWING 699 THE ALAMEDA SAN JOSE CA 95126	THE HEALTH TRUST 1701-A SOUTH BASCOM AVENUE CAMPBELL CA 95008	7,600.00	3,800.00	50.00

**2000
TABLE 6**

**Automobile Donations-Financial Reports Received but not Accepted for Filing
Listed by Percentage to Charity**

Commercial Fund-raiser	Charity	Total Revenue	To Charity	%
PENNEY'S TOWING 699 THE ALAMEDA SAN JOSE CA 95126	SUICIDE & CRISIS FOUNDATION P.O. BOX 26968 SAN JOSE CA 95159	7,910.00	3,910.00	49.43
DONATED PROPERTY SYSTEMS, INC. 14608 TITUS STREET VAN NUYS CA 91402	MOTION PICTURE AND TELEVISION FUND FOUNDATION 22212 VENTURA BLVD. #300 WOODLAND CA 91364	2,160.00	1,055.00	48.84
DONATED PROPERTY SYSTEMS, INC. 14608 TITUS VAN NUYS CA 91402	ABRAHAM JOSHUA HESCHEL DAY SCHOOL 17701 DEVONSHIRE STREET NORTHRIDGE CA 91325	14,180.00	6,887.50	48.57
DONATED PROPERTY SYSTEMS, INC. 14608 TITUS STREET VAN NUYS CA 91402	INTERNATIONAL GUIDING EYES, INC. 13445 GLENOAKS BLVD. SYLMAR CA 91342	7,130.00	3,459.93	48.53
DONATED PROPERTY SYSTEMS, INC. 14608 TITUS STREET VAN NUYS CA 91402	LAST CHANCE FOR ANIMALS 8033 SUNSET BLVD. #35 LOS ANGELES CA 90046	98,074.18	47,513.26	48.45
PENNEY'S TOWING 699 THE ALAMEDA SAN JOSE CA 95126	AIDS RESOURCES INFORMATION & SERVICES OF SANTA CLARA 380 NORTH FIRST STREET #200 SAN JOSE CA 95112	35,463.00	17,085.00	48.18
DONATED PROPERTY SYSTEMS, INC. 14608 TITUS STREET VAN NUYS CA 91402	PLANNED PARENTHOOD 1316 3RD STREET PROMENADE #84 SANTA MONICA CA 90401	34,764.61	16,733.39	48.13
DONATED PROPERTY SYSTEMS, INC. 14608 TITUS STREET VAN NUYS CA 91402	CHURCH ON THE WAY 14300 SHERMAN WAY VAN NUYS CA 91405	1,000.00	479.50	47.95

**2000
TABLE 6**

**Automobile Donations-Financial Reports Received but not Accepted for Filing
Listed by Percentage to Charity**

Commercial Fund-raiser	Charity	Total Revenue	To Charity	%
PENNEY'S TOWING 699 THE ALAMEDA SAN JOSE CA 95126	DIABETES SOCIETY OF SANTA CLARA 1165 LINCOLN AVENUE #300 SAN JOSE CA 95126	46,795.00	22,415.00	47.90
DONATED PROPERTY SYSTEMS, INC. 14608 TITUS STREET VAN NUYS CA 91402	ARCHDIOCESE OF LOS ANGELES 3424 WILSHIRE BLVD. LOS ANGELES CA 90010	55,370.00	26,478.76	47.82
DONATED PROPERTY SYSTEMS, INC. 14608 TITUS STREET VAN NUYS CA 91402	I HAVE A DREAM 4201 WILSHIRE BLVD. #520 LOS ANGELES CA 90010	1,360.00	645.00	47.43
DONATED PROPERTY SYSTEMS, INC. 14608 TITUS STREET VAN NUYS CA 91402	VARIETY BOYS AND GIRLS CLUB 2530 CINCINNATI STREET LOS ANGELES CA 90033	7,622.00	3,583.60	47.02
DONATED PROPERTY SYSTEMS, INC. 14608 TITUS STREET VAN NUYS CA 91402	EL PORTAL CENTER FOR THE ARTS 5269 LANKERSHEIM BLVD. NORTH CA 91601	1,055.00	492.10	46.64
DONATED PROPERTY SYSTEMS, INC. 14608 TITUS STREET VAN NUYS CA 91402	ALL AMERICAN BOYS CHORUS P.O. BOX 1527 COSTA MESA CA 92628	2,522.50	1,176.35	46.63
PENNEY'S TOWING 699 THE ALAMEDA SAN JOSE CA 95126	MOTHERS AGAINST DRUNK DRIVING 373 SOUTH MONROE STREET #204 SAN JOSE CA 95128	59,533.00	27,735.00	46.59
DONATED PROPERTY SYSTEMS, INC. 14608 TITUS STREET VAN NUYS CA 91402	ASSOCIATION TO AID VICTIMS OF DOMESTIC VIOLENCE P.O. BOX 220037 NEWHALL CA 91322	6,020.00	2,803.76	46.57

**2000
TABLE 6**

**Automobile Donations-Financial Reports Received but not Accepted for Filing
Listed by Percentage to Charity**

Commercial Fund-raiser	Charity	Total Revenue	To Charity	%
DONATED PROPERTY SYSTEMS, INC. 14608 TITUS STREET VAN NUYS CA 91402	PROSTATE CANCER RESEARCH INSTITUTE 5777 CENTURY BLVD. #885 LOS ANGELES CA 90045	7,135.00	3,322.25	46.56
PENNEY'S TOWING 699 THE ALAMEDA SAN JOSE CA 95126	PALO ALTO LIONS CHARITIES 885 NORTH SAN ANTONIO ROAD #L LOS ALTOS CA 94022	1,400.00	650.00	46.43
PENNEY'S TOWING 699 THE ALAMEDA SAN JOSE CA 95126	CHILD QUEST INTERNATIONAL 1625 THE ALAMEDA #500 SAN JOSE CA 95126	37,565.00	17,390.00	46.29
DONATED PROPERTY SYSTEMS, INC. 14608 TITUS STREET VAN NUYS CA 91402	CHILDREN'S HOSPITAL LOS ANGELES 4650 SUNSET BLVD. LOS ANGELES CA 90027	85,072.91	39,360.91	46.27
DONATED PROPERTY SYSTEMS, INC. 14608 TITUS STREET VAN NUYS CA 91402	THE HOSPICE FOUNDATION 2601 AIRPORT DRIVE #110B TORRANCE CA 90505	4,575.00	2,112.60	46.18
DONATED PROPERTY SYSTEMS, INC. 14608 TITUS STREET VAN NUYS CA 91402	YOUNG AND HEALTHY 325 S. OAK KNOLL AVENUE PASADENA CA 91101	3,922.50	1,790.25	45.64
HANSA TRADING INTERNATIONAL, INC. 3536 HAVEN AVENUE REDWOOD CITY CA 94063	SAN FRANCISCO MINISTRY TO NURSING HOMES 1255 CLAY STREET SAN FRANCISCO CA 94109	7,200.00	3,275.00	45.49
HANSA TRADING INTERNATIONAL, INC. 3536 HAVEN AVENUE REDWOOD CITY CA 94063	KTEH FOUNDATION 1585 SCHALLENBERGER ROAD SAN JOSE CA 95133	16,870.00	7,670.00	45.47

**2000
TABLE 6**

**Automobile Donations-Financial Reports Received but not Accepted for Filing
Listed by Percentage to Charity**

Commercial Fund-raiser	Charity	Total Revenue	To Charity	%
HANSA TRADING INTERNATIONAL, INC. 3536 HAVEN AVENUE REDWOOD CITY CA 94063	HAIGHT ASHBURY FREE CLINIC, INC. P.O. BOX 22917 SAN FRANCISCO CA 94129	12,660.00	5,755.00	45.46
HANSA TRADING INTERNATIONAL, INC. 3536 HAVEN AVENUE REDWOOD CITY CA 94063	KIDS IN DEVELOPMENT SOCIETY 801 FILLMORE STREET SAN FRANCISCO CA 94117	12,750.00	5,795.00	45.45
HANSA TRADING INTERNATIONAL, INC. 3536 HAVEN AVENUE REDWOOD CITY CA 94063	MISSING CHILDREN EDUCATION CENTER 468 BUSH STREET SAN FRANCISCO CA 94104	14,280.00	6,490.00	45.45
HANSA TRADING INTERNATIONAL, INC. 3536 HAVEN AVENUE REDWOOD CITY CA 94063	YOUTH AND FAMILY ASSISTANCE 609 PRICE AVENUE REDWOOD CITY CA 94063	8,200.00	3,725.00	45.43
HANSA TRADING INTERNATIONAL, INC. 3536 HAVEN AVENUE REDWOOD CITY CA 94063	CENTER FOR DOMESTIC VIOLENCE PREVENTION P.O. BOX 5090 SAN MATEO CA 94402	21,240.00	9,620.00	45.29
HANSA TRADING INTERNATIONAL, INC. 3536 HAVEN AVENUE REDWOOD CITY CA 94063	SILICON VALLEY ANIMAL RESCUE P.O. BOX 50249 PALO ALTO CA 94303	16,200.00	7,335.00	45.28
HANSA TRADING INTERNATIONAL, INC. 3536 HAVEN AVENUE REDWOOD CITY CA 94063	THE BRIDGE SCHOOL 545 EUCALYPTUS AVENUE HILLSBOROUGH CA 94010	5,800.00	2,625.00	45.26
HANSA TRADING INTERNATIONAL, INC. 3536 HAVEN AVENUE REDWOOD CITY CA 94063	THE ROTARY FOUNDATION 653 PITCCURIN DRIVE FOSTER CITY CA 94404	11,400.00	5,150.00	45.18

**2000
TABLE 6**

**Automobile Donations-Financial Reports Received but not Accepted for Filing
Listed by Percentage to Charity**

Commercial Fund-raiser	Charity	Total Revenue	To Charity	%
DONATED PROPERTY SYSTEMS, INC. 14608 TITUS STREET VAN NUYS CA 91402	CHANDLER LODGE FOUNDATION 11455 CHANDLER BLVD. NORTH CA 91601	5,302.50	2,393.13	45.13
DONATED PROPERTY SYSTEMS, INC. 14608 TITUS STREET VAN NUYS CA 91402	VOLUNTEERS OF AMERICA 3600 WILSHIRE BLVD. #1500 LOS ANGELES CA 90010	33,775.00	15,213.62	45.04
DONATED PROPERTY SYSTEMS, INC. 14608 TITUS STREET VAN NUYS CA 91402	KIDS KONNECTED 27071 CABOT ROAD #102 LAGUNA HILLS CA 92653	1,450.00	645.05	44.49
PENNEY'S TOWING 699 THE ALAMEDA SAN JOSE CA 95126	LIONS BLIND CENTER 101 NORTH BASCOM AVENUE SAN JOSE CA 95128	40,360.00	17,935.00	44.44
HANSA TRADING INTERNATIONAL, INC. 3536 HAVEN AVENUE REDWOOD CITY CA 94063	PENINSULA OUTREACH PROGRAMS 1725 WOODSIDE ROAD REDWOOD CITY CA 94061	11,500.00	5,035.00	43.78
DONATED PROPERTY SYSTEMS, INC. 14608 TITUS STREET VAN NUYS CA 91402	BOY SCOUTS OF AMERICA 16525 SHERMAN WAY #C-8 VAN NUYS CA 91406	93,472.50	40,527.71	43.36
DONATED PROPERTY SYSTEMS, INC. 14608 TITUS STREET VAN NUYS CA 91402	FOR THE CHILD 4565 CALIFORNIA AVENUE LONG BEACH CA 90807	2,000.00	866.00	43.30
DONATED PROPERTY SYSTEMS, INC. 14608 TITUS STREET VAN NUYS CA 91402	FRED JORDAN MISSIONS P.O. BOX 12345 COVINA CA 91722	31,431.72	13,558.63	43.14

**2000
TABLE 6**

**Automobile Donations-Financial Reports Received but not Accepted for Filing
Listed by Percentage to Charity**

Commercial Fund-raiser	Charity	Total Revenue	To Charity	%
DONATED PROPERTY SYSTEMS, INC. 14608 TITUS STREET VAN NUYS CA 91402	ST. JOHN'S EUDES CHURCH 9901 MASON AVENUE CHATSWORTH CA 91311	630.00	270.00	42.86
DONATED PROPERTY SYSTEMS, INC. 14608 TITUS STREET VAN NUYS CA 91402	SAN GABRIEL MISSION 428 S. MISSION DRIVE SAN GABRIEL CA 91776	4,390.00	1,853.75	42.23
DONATED PROPERTY SYSTEMS, INC. 14608 TITUS STREET VAN NUYS CA 91402	AIDS PROJECT LOS ANGELES 3550 WILSHIRE BLVD. #300 LOS ANGELES CA 90010	337,122.00	140,942.50	41.81
DONATED PROPERTY SYSTEMS, INC. 14608 TITUS STREET VAN NUYS CA 91402	ADVENTURES IN CARING FOUNDATION P.O. BOX 3859 SANTA BARBARA CA 93130	825.00	343.00	41.58
DONATED PROPERTY SYSTEMS, INC. 14608 TITUS STREET VAN NUYS CA 91402	GOOD SHEPHERD SHELTER OF LOS ANGELES 2561 VENICE BLVD. LOS ANGELES CA 90019	790.00	317.50	40.19
HANSA TRADING INTERNATIONAL, INC. 3536 HAVEN AVENUE REDWOOD CITY CA 94063	BAY AREA HEALTH MINISTRIES 70 WEST CLAY PARK SAN FRANCISCO CA 94121	6,000.00	2,400.00	40.00
DONATED PROPERTY SYSTEMS, INC. 14608 TITUS STREET VAN NUYS CA 91402	PROJECT NEW HOPE 3325 WILSHIRE BLVD. #800 LOS ANGELES CA 90010	1,800.00	633.15	35.17
VEHICLE DONATION PROCESSING CENTER, INC. 5406 DENTON PLACE OAKLAND CA 94619-3108	YMCA 44 MONTGOMERY STREET, SUITE 770 SAN FRANCISCO CA 94104	12,875.00	4,433.00	34.43

**2000
TABLE 6**

**Automobile Donations-Financial Reports Received but not Accepted for Filing
Listed by Percentage to Charity**

Commercial Fund-raiser	Charity	Total Revenue	To Charity	%
CHARITY FUNDING SERVICES, INC. 16182 PACIFIC COAST HIGHWAY HUNTINGTON CA 92649	BEYOND DREAMS FOUNDATION 236 WEST PORTAL, SUITE 308 SAN FRANCISCO CA 94127	8,057.51	2,733.53	33.93
DONATED PROPERTY SYSTEMS, INC. 14608 TITUS STREET VAN NUYS CA 91402	MAKE-A-WISH FOUNDATION LOS ANGELES 1875 CENTURY PARK EAST #1460 LOS ANGELES CA 90667	3,456,007.	1,118,179.	32.35
VEHICLE DONATION PROCESSING CENTER, INC. 5406 DENTON PLACE OAKLAND CA 94619-3108	OPERA PACIFIC 600 WEST WARNER AVENUE SANTA ANA CA 92707	11,250.00	3,503.00	31.14
DONATED PROPERTY SYSTEMS, INC. 14608 TITUS STREET VAN NUYS CA 91402	THE HOPE INSTITUTE FAMILY FUND OF SOUTHERN CALIFORNIA 2900 BRISTOL STREET #C-207 COSTA MESA CA 92626	745.00	212.45	28.52
VEHICLE DONATION PROCESSING CENTER, INC. 5406 DENTON PLACE OAKLAND CA 94619-3108	KNDL-NON PROFIT RADIO P.O. BOX 89 ANGWIN CA 94508	24,855.00	6,888.00	27.71
DONATED PROPERTY SYSTEMS, INC. 14608 TITUS STREET VAN NUYS CA 91402	CHILDRENS BUREAU OF SOUTHERN CALIFORNIA 3910 OAKWOOD LOS ANGELES CA 90004	560.00	152.50	27.23
CHARITIES AUTOMOBILE RECYCLING ENTERPRISES, 1301 EAST ORANGEWOOD AVENUE ANAHEIM CA 92805	ALZHEIMERS ASSOCIATION 5900 WILSHIRE BLVD., SUITE 1710 LOS ANGELES CA 90036	150,383.00	36,903.00	24.54
DONATED PROPERTY SYSTEMS, INC. 14608 TITUS STREET VAN NUYS CA 91402	INTERNATIONAL RESCUE COMMITTEE 3727 W. SIXTH STREET #619 LOS ANGELES CA 90020	475.00	115.50	24.32

**2000
TABLE 6**

**Automobile Donations-Financial Reports Received but not Accepted for Filing
Listed by Percentage to Charity**

Commercial Fund-raiser	Charity	Total Revenue	To Charity	%
CHARITIES AUTOMOBILE RECYCLING ENTERPRISES, 1301 EAST ORANGEWOOD AVENUE ANAHEIM CA 92805	ALZHEIMERS - VENTURA 2630 SADDLE AVENUE, SUITE 101 OXNARD CA 93030	8,850.00	1,945.00	21.98
CHARITIES AUTOMOBILE RECYCLING ENTERPRISES, 1301 EAST ORANGEWOOD AVENUE ANAHEIM CA 92805	ALZHEIMERS ASSOCIATION - ORANGE COUNTY 2540 N. SANTIAGO BLVD. ORANGE CA 92867	20,985.00	4,417.00	21.05
CARS FOR KIDS, INC. P.O. BOX 55516 HAYWARD CA 94515	FUENTE DE VIDA 570 APPIAN WAY EL SOBRANTE CA 94803	469,200.00	28,604.00	6.10
DONATED PROPERTY SYSTEMS, INC. 14608 TITUS STREET VAN NUYS CA 91402	JOLENE'S HORSE RESCUE 9800 D TOPANGA CANYON BLVD. #155 CHATSWORTH CA 91311	600.00	29.05	4.84
DONATED PROPERTY SYSTEMS, INC. 14608 TITUS STREET VAN NUYS CA 91402	ST. JOHN BAPTIST DE LA SALLE CHURCH 10738 HAVENHURST AVENUE GRANADA HILLS CA 91344	220.00	0.00	0.00
DONATED PROPERTY SYSTEMS, INC. 14608 TITUS STREET VAN NUYS CA 91402	GRACE CENTER P.O. BOX 70826 SIERRA MADRE CA 91117	137.50	0.00	0.00
DONATED PROPERTY SYSTEMS, INC. 14608 TITUS STREET VAN NUYS CA 91402	PET ASSISTANCE FOUNDATION P.O. BOX 8207 VAN NUYS CA 91409	125.00	0.00	0.00
DONATED PROPERTY SYSTEMS, INC. 14608 TITUS STREET VAN NUYS CA 91402	NATIONAL VETERAN'S FOUNDATION 9841 AIRPORT BLVD. #5-414 LOS ANGELES CA 90045	460.00	0.00	0.00

**2000
TABLE 6**

**Automobile Donations-Financial Reports Received but not Accepted for Filing
Listed by Percentage to Charity**

Commercial Fund-raiser	Charity	Total Revenue	To Charity	%
DONATED PROPERTY SYSTEMS, INC. 14608 TITUS STREET VAN NUYS CA 91402	WOMEN AT WORK 50 N. HILL AVENUE #300 PASADENA CA 91106	80.00	0.00	0.00
DONATED PROPERTY SYSTEMS, INC. 14608 TITUS STREET VAN NUYS CA 91402	Y.M.C.A. 26147 MC BEAN PARKWAY SANTA CLARITA CA 91355	55.00	0.00	0.00
Total Revenue, Amount to Charity, Average Percentage to		6,108,218	2,182,558	46.15