

**ATTORNEY GENERAL'S SUMMARY OF
RESULTS OF CHARITABLE
SOLICITATION BY
COMMERCIAL FUNDRAISERS**



BILL LOCKYER
Attorney General
State of California

Year Ending 2005

ATTORNEY GENERAL'S SUMMARY OF RESULTS OF CHARITABLE
SOLICITATION BY COMMERCIAL FUNDRAISERS
(Government Code ' 12599)

TABLE OF CONTENTS

		PAGES
	INTRODUCTION	1-2
	2005 REPORTS CHART: AVERAGE PERCENT TO CHARITY, REVENUE TO CHARITY	3
<u>TABLE</u>	<u>SUBJECT/TITLE</u>	
1	CFR LISTING BY PERCENTAGE TO CHARITY IN WHICH 15% OR LESS WENT TO CHARITY	4-13
2	CFR LISTING BY PERCENTAGE TO CHARITY	14-58
3	CHARITY/CHARITABLE PURPOSE LISTED ALPHABETICALLY WITH CFR	59-141
4	BREAKDOWN OF CAMPAIGNS BY EVENT	142-218
5	LISTING OF FINANCIAL REPORTS RECEIVED THAT ARE UNACCEPTABLE FOR FILING SORTED BY PERCENT TO CHARITY	219-221
6	COMMERCIAL FUNDRAISERS THAT WERE REGISTERED IN 2005 BUT DID NOT FILE FINANCIAL REPORTS FOR 2005	222-226



1300 I STREET
P.O. BOX 903447
SACRAMENTO, CA 94203-4470
Public: (916) 445-2021
Facsimile: (916) 444-3651
E-Mail: <http://ag.ca.gov/charities/>

ATTORNEY GENERAL'S SUMMARY OF RESULTS OF CHARITABLE SOLICITATION BY COMMERCIAL FUNDRAISERS

The term "commercial fundraiser" refers generally to a person or corporation that is a for-profit business and contracts with charities, for compensation, to raise money on their behalf.

The commercial fundraiser charges charities a flat fee or a percentage of the contributions collected on behalf of the charities. It is important to note, however, that most of the 93,000 charities registered with the Attorney General do *not* use commercial fundraisers to raise funds.

By law, commercial fundraisers are required to register and file annual financial disclosure reports with the Attorney General's Registry of Charitable Trusts. The data here covers activities for 2005 that were reported by commercial fundraisers in 2006.

Historical figures show that a campaign conducted by a commercial fundraiser returns, on average, less than 50 percent of the contributions to the charity. The rest is retained by the commercial fundraiser as a fundraising fee. This summary reflects the results of solicitation campaigns by commercial fundraisers in 2005, as stated in the annual financial reports filed with the Attorney General. In 2005, commercial fundraisers collected a total of about **\$332.8** million in charitable contributions within this state. The return to charity from the average commercial fundraiser campaign was **36.48** percent. These figures represent an increase in charitable contributions from 2004 of approximately **\$39** million (**13%**), with the average percent to charity remaining the same.

The "Average Percent to Charity" shown for this and past years was obtained by taking the percentage of contributions returned to charity for each solicitation campaign, adding the individual percentages together, and dividing by the number of campaigns, thus obtaining the "percent to charity" for the average campaign. A second table shows overall revenue raised and overall revenue to charity. Calculation of the percentage of charitable contributions going to charity using these overall figures is skewed by a few individual campaigns with revenue figures that are very high in comparison to most campaigns. Because these overall figures do not yield a "percent to charity" that is reflective of the average campaign, they have not been used in calculating the "Average Percent to Charity".

The following summarizes the total number of commercial fundraising campaigns that yielded specific percentages to charities: more than 50% to charity (**220**), between 31% and 50% to charity (**120**), between 21% and 30% to charity (**55**), between 16% and 20% to charity (**85**), and 15% and less to charity (**174**).

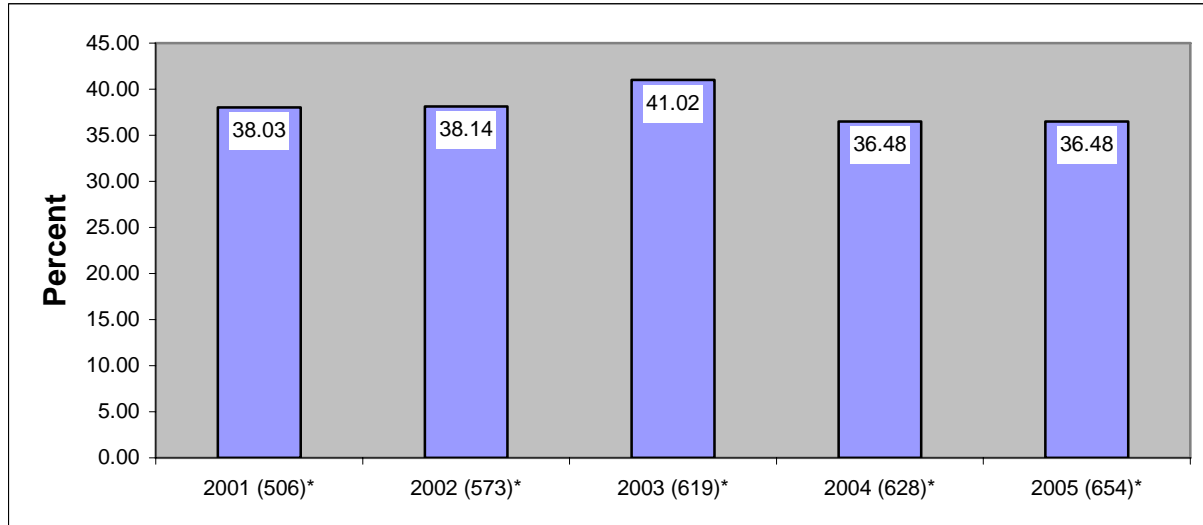
It is important to note that the information in this summary is taken unedited from reports filed by the charities and fundraisers themselves. To be accepted by the Attorney General, the reports must be signed by the commercial fundraisers *and* officers of the charities for whom the solicitations were made. The actual reports should be consulted for more complete information provided by the filers. You may review the reports, as well as a wealth of information about charities and fundraising, on the Attorney General's Internet website:

<http://ag.ca.gov/charities/>

The Attorney General also publishes a Guide to Charitable Giving for Donors. You may obtain a Guide at the Attorney General's Internet website, or write to the Attorney General's Public Inquiry Unit, P.O. Box 944255, Sacramento, California 94244.

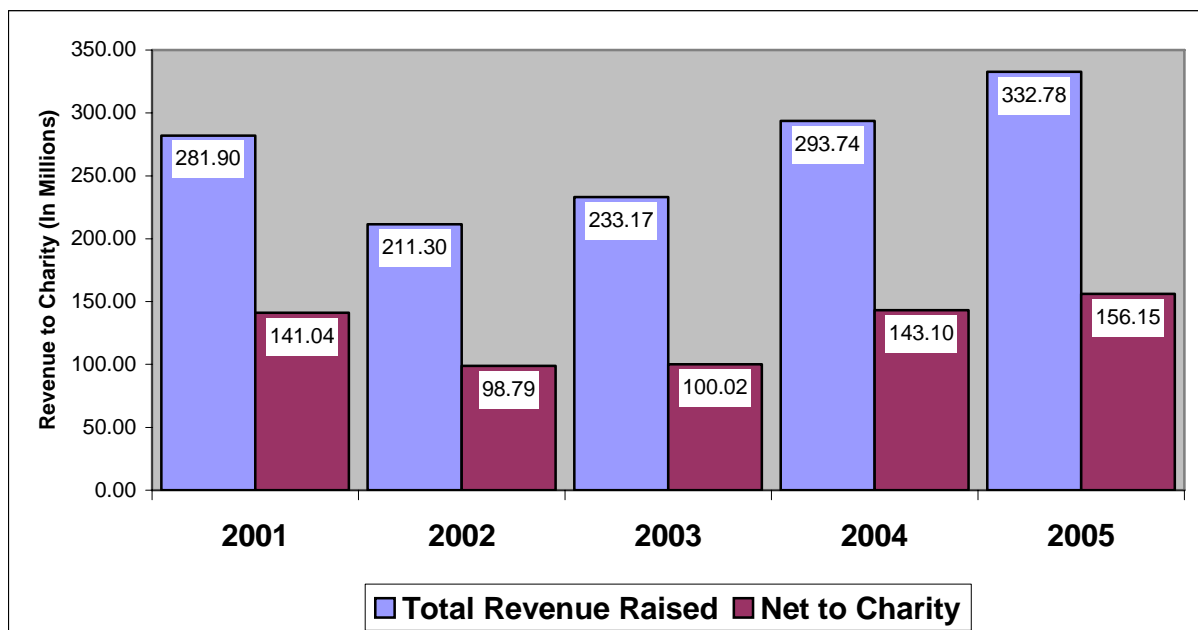
Commercial Fundraisers 2001-2005

Average Percent to Charity



*Note: Number of Campaigns

Revenue to Charity



ATTORNEY GENERAL'S
CHARITABLE COMMERCIAL FUNDRAISERS REPORT

TABLES

To view Tables use "bookmarks" to select or use links below:

<u>TABLE</u>	<u>SUBJECT/TITLE</u>	
1	CFR LISTING BY PERCENTAGE TO CHARITY IN WHICH 15% OR LESS WENT TO CHARITY	4-13
2	CFR LISTING BY PERCENTAGE TO CHARITY	14-58
3	CHARITY/CHARITABLE PURPOSE LISTED ALPHABETICALLY WITH CFR	59-141
4	BREAKDOWN OF CAMPAIGNS BY EVENT	142-218
5	LISTING OF FINANCIAL REPORTS RECEIVED THAT ARE UNACCEPTABLE FOR FILING SORTED BY PERCENT TO CHARITY	219-221
6	COMMERCIAL FUNDRAISERS THAT WERE REGISTERED IN 2005 BUT DID NOT FILE FINANCIAL REPORTS FOR 2005	222-226