

# ***Welcome!***

## **CARE Community Briefing: Immigration Detention in California**


*A Review of Conditions of Confinement*

**Tuesday, June 9 | 1:00pm - 2:00pm**

The presentation will begin shortly. No audio is currently being played.



## Accessibility/Accesibilidad

- **Find the menu bar at the bottom of your zoom window** | *Busque la barra de menú en la parte inferior de su ventana de zoom*
  - **For closed captioning, select “more”** | *Para subtítulos, seleccione “more”*
  - **For Spanish and American Sign Language interpretation, select the image that looks like this** / *Para interpretación en español y lengua de signos americana, seleccione la imagen que se parece a esta:* 

# AGENDA

## I. Welcome & Introduction

## II. Immigration Detention in California: A Review of Conditions of Confinement

I. Overview: *Special Assistant Attorney General Regina Garza*

II. Findings: *Supervising Deputy Attorney General Vilma Palma-Solana, and Deputy Attorneys General Kelly Burns & Emilia Morris*

## III. Questions

## IV. Closing



**CARE**

Community Awareness,  
Response, and Engagement

# Immigration Detention in California: A Review of Conditions of Confinement (2026)

# Assembly Bill 103 (2017)

- AB 103 is a transparency bill that directs the California Department of Justice (DOJ) to review private immigration detention facilities operating in California.
  - Started in 2017 and set to expire on July 1, 2027.
  - Senate Bill 1399 (Durazo) would remove AB 103's sunset provision.
- Covers **locked immigration detention facilities operated by private corporations** (or local governments, which no longer provide immigration detention in California)
- Scope of review:
  - Conditions of confinement
  - Standard of care
  - How conditions affect due process
- AB 103 does not impose standards
  - Applicable standards include constitutional requirements, federal and state law requirements, and ICE's own detention standards:
    - (1) Performance Based National Detention Standards (2011, rev. 2016), and
    - (2) National Detention Standards (NDS) (2000, rev. 2025)

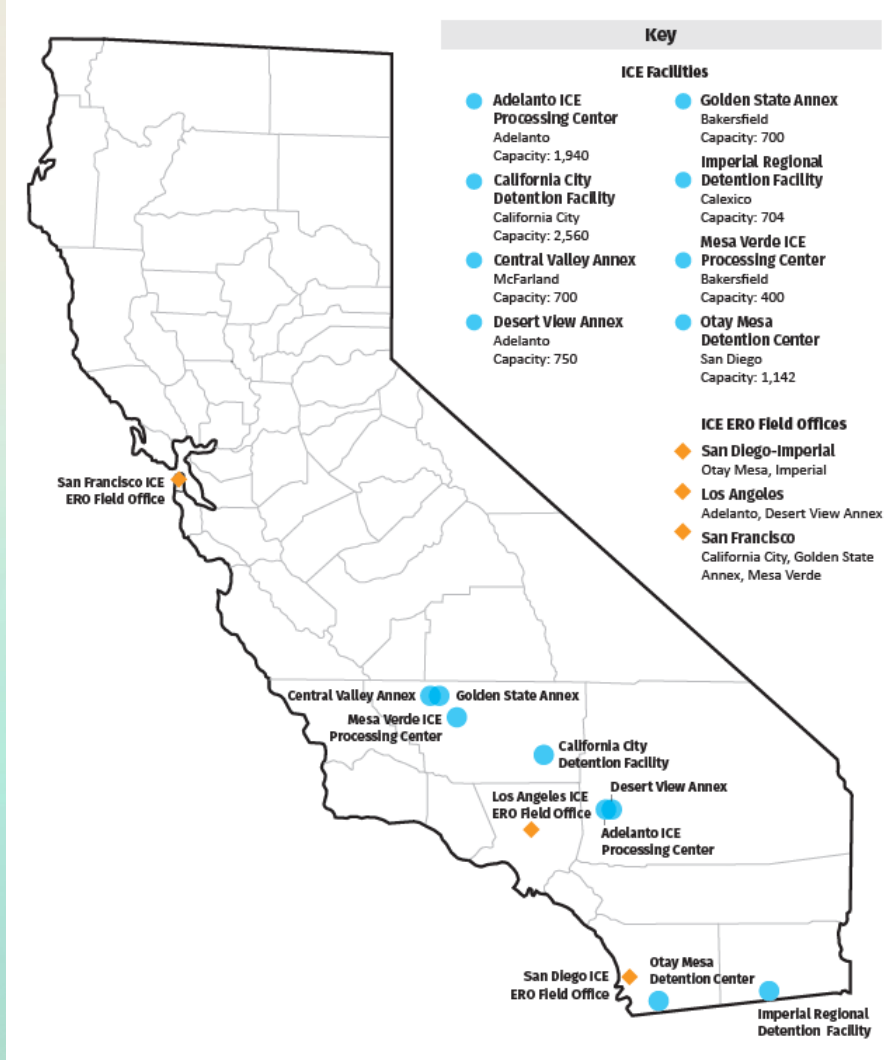
## CA DOJ's Previous Reports

1. Immigration Detention in California (February 2019)
2. Immigration Detention in California (January 2021)
3. Immigration Detention in California: A Review of Immigration Detention Facilities' Response to COVID-19 as of Fall 2021 (July 2022)
4. Immigration Detention in California: A Comprehensive Review with a Focus on Mental Health (April 2025)

# Immigration Detention Facilities in California

- 1. Adelanto ICE Processing Center (GEO Group)**
  - Adelanto, San Bernardino County
- 2. California City Detention Facility (CoreCivic)**
  - California City, Kern County
- 3. Central Valley Annex (GEO Group)—**  
*Began holding ICE detainees in April 2026 and therefore is not included in this review or report*
  - McFarland, Kern County
- 4. Desert View Annex (GEO Group)**
  - Adelanto, San Bernardino County
- 5. Golden State Annex (GEO Group)**
  - McFarland, Kern County
- 6. Imperial Regional Detention Facility (MTC)**
  - Calexico, Imperial County
- 7. Mesa Verde ICE Processing Center (GEO Group)**
  - Bakersfield, Kern County
- 8. Otay Mesa Detention Center (CoreCivic)**
  - San Diego, San Diego County

# Location of Immigration Detention Facilities in California



# Overview of Detention



Otay Mesa Intake Holding Cell

Cal City Intake Stations



Imperial Recreation Yard

Mesa Verde Dining Hall



Adelanto Housing Unit =>



# Scope of 2026 Report

- **Period**
  - Between July and November 2025
- **Focus**
  - Changing conditions due to increased immigration enforcement, including:
    - Changes in detainee numbers and demographics
    - Intake Process
    - Basic Necessities
    - Access to medical care
    - Barriers to due process

# Methodology

- **Pre-Visit**

- Publicly available information (ICE data, reports, articles, and legal filings)
- Documents provided by the facilities (i.e. rosters and logs)

- **Site Visits**

- A team from DOJ, including **medical and immigration detention subject matter experts**, conducted site visits to the seven facilities in operation in 2025.
- Facility tours and observations, on-site record review, staff interviews
- Detainee interviews: **194 detainees** from 49 different countries who spoke 21 different languages

- **Post-Visit**

- Analyze all information collected and draft report
  - DOJ's Research Services analyzed interview responses and data provided by the facilities

# Population Surged in 2025

Facility	Max. ICE Bed Capacity	Guaranteed Minimum Beds	Cal DOJ 2023 Visit			Cal DOJ 2025 Visit		
			Date <sup>1</sup>	Detainee Count	Avg. LOS (days)	Date	Detainee Count	Avg. LOS (days)
Adelanto	1,940	640	11/14/23	7	1,492	7/7/25	1,570	38.6
Desert View Annex	750	480	11/14/23	417	68.4	7/7/25	517	64.1
Golden State Annex	700	560	5/2/23	159	183	9/23/25	569	82.8
Mesa Verde	400	400	5/1/23	41	254.7	9/25/25	370	29.2
Imperial	704	640	6/13/23	492	61.7	10/2/25	627	133.7
Otay Mesa	1,142	750	9/19/23	1,187	58.9	10/6/25	1,433 <sup>2</sup>	126.5
Cal City	2,560	Unknown <sup>3</sup>	N/A	N/A	N/A	11/19/25	942	45.6

## Detainee Population Facts

- **Country of Origin**

- Detainees hailed from over 120 countries. The top three countries represented were Mexico, India, and Guatemala.

- **Sex**

- In 2023, only two facilities (Adelanto and Otay Mesa) reported holding female detainees, with a total of 170 female detainees
- In 2025, five facilities reported a combined total of 815 female detainees, a 379% increase

- **Security Classification**

Security Classification	Count	Percent
Low	3,721	62.0%
Medium Low	306	5.1%
Medium	307	5.1%
Medium High	703	11.7%
High	925	15.4%
Unclear or Missing Data	42	0.7%



## Key Findings

## Key Findings: Overarching Findings

- **Worsening Conditions**

- While population surges have had varying results across the facilities, overall, they have led to overwhelmed processes and violations of detention standards

- **Food and Water**

- Complaints about the quality and quantity of food, with some reporting gastric distress, and inconsistent mealtimes
- Poor quality water
- Reports of spending large sums at commissary for basic needs that facilities are required to provide

## Key Findings: Overarching Findings *(continued)*

- **Medical Care**

- Failure to consistently provide timely responses to requests for medical care, including situations with acute injury or where emergency care was needed
- Lack of reliable systems to obtain and track referral of patients to specialty care and follow up care after hospital visits
- Failure to provide consistent timely screening and assessments
- **Highest number of deaths** since DOJ started conducting AB 103 reviews
  - Six deaths between September 2025 and March 2026 (four at Adelanto, and two at Imperial)

- **Conditions of Confinement Impacted by Transfers**

- Difficulty of access to counsel or contact with family
- Loss of personal property and commissary balances
- Interruption of medical care

## Key Findings: Adelanto and Desert View

- Overwhelmed by large and rapid population increase, particularly at Adelanto, in June and the first week of July 2025, around the time of the ICE surges in Los Angeles
- Concerning uses of pepper spray
- Four detainee deaths of men held at the facility. Families allege deaths associated with substandard medical care



## Key Findings: Golden State Annex

- Experienced a 258% population increase as compared to 2023
- No increased staffing to accommodate population growth and not equipped to handle increase in population
- Deficiencies in language access (language line and handbooks), leading to detainees appearing not to understand facility rules and procedures



## Key Findings: Mesa Verde

- Tremendous population surge since last visit (802%)
- Detainees reported a chaotic, overcrowded, overwhelming, and unsanitary intake process
- Access to food, water, and medical needs – problems similar to other facilities
- Medical care delays appeared to be caused, in part, by delays in approvals by ICE Health Service Corps and cancelled or dropped referrals due to transfers between facilities



## Key Findings: Imperial



- Smaller population increase (27%)
- Detainees reported that they had better living conditions as compared to other facilities, including better food
- Health care staffing has improved since 2023 visit
- Observed evidence of delays and obstacles to access medical care
- Two detainee deaths between September 2025 and January 2026, reportedly due to seizure and heart issues

## Key Findings: Otay Mesa

- 21% population increase since 2023
- Detainees reported periods of population surges -- detainees packed into housing bays on “boats” placed on the floor
- Population surges resulted in prolonged intake experiences under poor conditions
- In at least some of the housing units, the number of toilets was insufficient for the number of detainees
- Improved medical staffing since 2023, but medical recordkeeping disorganized resulting in lapses in basic care
- Only facility in CA that strip searches detainees after each non-legal contact visit



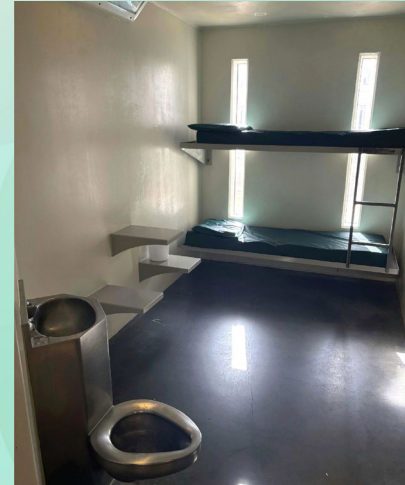
## Key Findings: California City

- Detainees reported that conditions at Cal City were consistently worse than other facilities
- Understaffing
  - Facility opened prematurely and was inadequately staffed
  - No contact visits with loved ones
- Medical Care
  - Only one physician providing care, with inconsistent external backup
  - Comprehensive intake medical assessments not consistently completed within NDS standard time frames or dropped altogether



## Key Findings: California City (cont.)

- Extreme Temperatures
  - Detainees described extremely cold temperatures and leaks during rainy periods
  - Clothing provided was inadequate to keep detainees warm, and detainees reported being disciplined for using socks as sleeves and covering air vents with paper
- Lockdowns and Outdoor/Recreation
  - Facility was run “like a prison” with unnecessarily long periods locked down
  - Inadequate recreation and outdoor access, which was worse for female detainees





**Conclusion**

## Next Steps

- Planning next round of site visits and review of the eight facilities located in California, including newly opened Central Valley Annex
- A.B. 103 sunsets in July 2027. S.B. 1399, which would remove this sunset date, is pending in the Legislature.

## Resources

- To access CA DOJ immigration resources visit:
  - <https://oag.ca.gov/immigrant>
    - Know your rights materials; resources for employers
- To report federal agent misconduct:
  - <https://oag.ca.gov/reportmisconduct>

# Thank You!

- **Video and Presentation Materials Will Be Available At:**

<https://oag.ca.gov/care/community-briefings>

*Note: Please allow at least one week for the video to be uploaded.*

- **Upcoming Event:**

**Demystifying the Department of Justice: Bureau of Criminal Information and Analysis**

**June 18, 2026**

**10 AM – 11 AM**

**Virtual Presentation**

[Register Here](#)

**(Registration link will also be added in chat)**

**Contact Us: [care@doj.ca.gov](mailto:care@doj.ca.gov)**

Feedback Survey: CARE  
Community Briefing - Immigration  
Detention Facilities

