



C A L I F O R N I A

---

DEPARTMENT OF JUSTICE

CURES  
X

**CURES Information Exchange Web Service**

**Implementation Guide v.5.1**

**October 2024**

REVISION RECORD		
DATE	REVISION	CHANGE REFERENCE
10/24/2024	5.1	<ul style="list-style-type: none"> <li>● <b>Section 6 (HTTP Header):</b> <ol style="list-style-type: none"> <li>1. Removed <b>X-dn</b> as a key within the header</li> </ol> </li> <li>● <b>Added to Change Highlights to Header Update for revision 5.0:</b> <ol style="list-style-type: none"> <li>2. <b>X-payload-version</b> value will be <b>2023011</b></li> </ol> </li> </ul> <p><b>Published Version.</b> Document posted to public website: 10/30/2024</p>
10/01/2024	5.0	<p><b>NCPDP 2023011 upgrade--</b> header, /patients, /users-status, /prescriptions request and response XML modifications:</p> <ul style="list-style-type: none"> <li>● <b>Header update:</b> <ol style="list-style-type: none"> <li>1. <b>X-dn Key required as part of the header (Value = /CN={common name assigned to MOU entity}/)</b></li> <li>2. <b>X-payload-version</b> value will be <b>2023011</b></li> </ol> </li> <li>● <b>/users-status updates:</b> <ol style="list-style-type: none"> <li>1. Delegate Status check implemented</li> <li>2. Delegate status check will return a new message (status code = 010, description code = 010) if there is not active relationship with the authorizing user</li> </ol> </li> <li>● <b>/patients and /prescriptions request updates:</b> <ol style="list-style-type: none"> <li>1. Healthcare entity (business) name from where the request is being sent must be sent via &lt;Header&gt;&lt;From&gt;</li> <li>2. Patient Last Name and Patient First Name are contained within the &lt;Names&gt; attribute</li> <li>3. Patient Gender is contained within &lt;GenderAndSex&gt;&lt;AdministrativeGender&gt; attributes</li> <li>4. Prescriber, Non-DEA Practitioner, and Pharmacist names are contained within the &lt;Names&gt; attribute</li> <li>5. Delegate requests supported via &lt;Requestor&gt; attributes. Authorizing User information is required. Active relationship with Authorizing User is required to query on behalf of an authorizing user.</li> </ol> </li> </ul>

REVISION RECORD		
DATE	REVISION	CHANGE REFERENCE
		<p>6. If there is not active relationship with the authorizing user, status message is returned (Status Code = 010 / Description Code = 134)</p> <ul style="list-style-type: none"> <li>• <b>/patients single patient match and /prescriptions response updates:</b> <ol style="list-style-type: none"> <li>1. Patient Last Name and Patient First Name are contained within the &lt;Names&gt; attribute</li> <li>2. Patient Gender is contained within &lt;GenderAndSex&gt;&lt;AdministrativeGender&gt; attributes</li> <li>2. Animal Species are identified via an Extension; this extension only appears when the patient is an animal patient</li> <li>3. Animal name is provided via an Extension; this extension only appears when the patient is an animal patient</li> <li>4. Serialized Prescription Number is contained within &lt;MedicationDispensed&gt;&lt;HistoryPrescriberOrderNumber&gt;</li> <li>5. This attribute is no longer present &lt;MedicationDispensed&gt;&lt;DrugCoded&gt;&lt;ProductCode&gt;&lt;Qualifier&gt;</li> <li>6. The &lt;Note&gt; attribute only contains Refills Authorized</li> <li>7. Prescriber Name is contained &lt;Names&gt; attribute</li> <li>8. Default value for &lt;MedicationDispensed&gt;&lt;HistorySource&gt;&lt;Source&gt;&lt;SourceQualifier&gt; is Pharmacy</li> <li>9. Date Sold is contained within &lt;OtherMedicationDates&gt;&lt;OtherMedicationDate&gt;&lt;Date&gt;</li> <li>10. Daily MME is contained via &lt;MedicationDispensed&gt;&lt;Extension&gt; (not applicable to Interstate responses)</li> <li>11. Total MME is contained via &lt;MedicationDispensed&gt;&lt;Extension&gt; (not applicable to Interstate responses)</li> <li>12. State PDMP Where the Record Originated is contained via &lt;MedicationDispensed&gt;&lt;Extension&gt;</li> <li>13. Date Sold valued defaults to <b>1900-01-01</b> if not provided via the Interstate response</li> </ol> </li> </ul>

REVISION RECORD		
DATE	REVISION	CHANGE REFERENCE
		<ul style="list-style-type: none"> <li>• <b>/patients multiple patient match response updates:</b> <ol style="list-style-type: none"> <li>1. Patient Last Name and Patient First Name are contained within the &lt;Names&gt; attribute</li> <li>2. Patient Gender is contained within &lt;GenderAndSex&gt;&lt;AdministrativeGender&gt; attributes</li> <li>3. Animal Species are identified via an Extension; this extension only appears when the patient is an animal patient</li> <li>4. Animal name is provided via an Extension; this extension only appears when the patient is an animal patient</li> <li>5. For a picklist response from /patients, &lt;Note&gt; contains the number of prescriptions for the patient</li> </ol> </li> <li>• <b>Error/Status Code updates:</b> <ol style="list-style-type: none"> <li>1. New status code/description code when an Active relationship does not exist between a delegate and an authorizing user. (Status Code 010 / Description Code 134)</li> <li>2. Removed Status Code = 700/Description Code = 210</li> </ol> </li> </ul>

# CURES Information Exchange Web Service Implementation Guide

<b>1</b>	<b>INTRODUCTION</b>	<b>7</b>
1.1	PURPOSE	7
<b>2</b>	<b>SYSTEM OVERVIEW</b>	<b>7</b>
2.1	SYSTEM BACKGROUND	7
2.2	DEFINITIONS, ACRONYMS, AND ABBREVIATION	7
2.3	APPLICATION OVERVIEW	9
2.3.1	<i>Patient/Prescriptions</i>	10
2.3.1.1	Query Use Case 1 – CURES and Interstate Data: Patient Match/Response	11
2.3.1.2	Query Use Case 2 – CURES and Interstate Data: Multiple Patient Matched (Picklist)	12
2.3.2	<i>Account Status Check</i>	12
<b>3</b>	<b>AUTHENTICATION</b>	<b>13</b>
3.1	SECURITY LAYERS	13
3.1.1	<i>Network Communication Security</i>	13
3.1.2	<i>Access Security</i>	13
3.2	MUTUAL AUTHENTICATION	13
<b>4</b>	<b>AUDITING</b>	<b>15</b>
4.1	AUDIT DATA	15
<b>5</b>	<b>DATA MAPPING</b>	<b>16</b>
5.1	<i>/IEWS/PATIENTS - REQUEST MAPPING OF CURES AND INTERSTATE DATA TO NCPDP FORMAT</i>	16
5.1.1	<i>/iews/patients (CURES Data Response for Single Patient Matched) - Response Mapping of CURES Data to NCPDP Format</i>	18
5.1.2	<i>/iews/patients (CURES Data Response for Multiple Patients Matched) - Response Mapping of CURES Data to NCPDP Format</i>	21
5.1.3	<i>/iews/patients (Interstate Data Response for Single Patient Matched) –Response Mapping of Interstate Data to NCPDP Format</i>	24
5.1.4	<i>/iews/patients (Interstate Data Response for Multiple Patients Matched) - Response Mapping of CURES Data to NCPDP Format</i>	29
5.2	<i>/IEWS/PRESCRIPTIONS (CURES AND INTERSTATE DATA REQUEST FOR PICKLIST PATIENTS) - REQUEST MAPPING OF CURES AND INTERSTATE DATA TO NCPDP FORMAT</i>	32
5.2.1	<i>/iews/prescriptions (CURES Data Response for Patient from Picklist) – Response Mapping of CURES Data to NCPDP Format</i>	34
5.2.2	<i>/iews/prescriptions (Interstate Data Response for Patient from Picklist) – Response Mapping of CURES Data to NCPDP Format</i>	37
5.3	<i>/IEWS/USERS-STATUS – REQUEST MAPPING OF CURES DATA TO NCPDP FORMAT</i>	41
5.3.1	<i>/iews/users-status - Response Mapping of CURES Data to NCPDP Format</i>	42
5.4	<i>/IEWS/ENTITY-STATUS - REQUEST MAPPING OF CURES DATA TO NCPDP FORMAT</i>	43
5.4.1	<i>/iews/entity-status - Response Mapping of CURES Data to NCPDP Format</i>	44
<b>6</b>	<b>HTTP HEADER</b>	<b>45</b>
6.1	HTTP HEADER	45
6.1.1	<i>Sample Header</i>	45
6.1.2	<i>Default Values</i>	45
<b>7</b>	<b>ERROR AND STATUS CODES</b>	<b>46</b>
7.1	TRANSACTION CODES	46
7.2	STATUS/ERROR CODES	47

<b>8</b>	<b>/IEWS/PATIENTS</b> .....	<b>50</b>
8.1	/IEWS/PATIENTS OVERVIEW .....	50
8.2	CURES DATA RESPONSE .....	52
8.2.1	Single Patient Matched.....	52
8.2.2	Multiple Patients Matched .....	53
8.2.3	Status Message Response.....	53
8.3	INTERSTATE DATA RESPONSE .....	53
8.3.1	Single Patient Matched.....	53
8.3.2	Multiple Patients Matched .....	54
8.4	FAILED REQUEST .....	55
8.5	ERRED REQUEST .....	55
8.6	/IEWS/PATIENTS : CURES DATA REQUEST SAMPLES .....	55
8.6.1	CURES Data: Prescriber/Non-DEA Practitioner Request .....	55
8.6.2	CURES Data: Pharmacist Request.....	56
8.6.3	CURES Data: Delegate Request on behalf of a Prescriber/Non-DEA Practitioner Authorizing User ....	58
8.6.4	CURES Data: Delegate Request on behalf of a Pharmacist Authorizing User.....	60
8.7	/IEWS/PATIENTS: CURES DATA RESPONSE SAMPLES .....	61
8.7.1	CURES Data: One Human Patient Entity Result – Prescription Data Response.....	61
8.7.2	CURES Data: One Animal Patient Entity Result – Prescription Data Response .....	64
8.7.3	CURES Data: Multiple Patients Matched (for Picklist) Response .....	71
8.7.4	CURES Data: Multiple Patients Matched (for Non-Picklist) Response .....	74
8.7.5	CURES Data: No Result (Status Response).....	74
8.8	/IEWS/PATIENTS: INTERSTATE DATA REQUEST SAMPLE .....	75
8.9	/IEWS/PATIENTS: INTERSTATE DATA RESPONSE SAMPLES .....	76
8.9.1	Interstate: One Patient Entity Result – Prescription Data Response.....	76
8.9.2	Interstate: Multiple Patients Matched (for Picklist) Response.....	80
8.9.3	Interstate: Multiple Patients Matched (for Non-Picklist) Response.....	83
8.9.4	Interstate: No Patient-Prescription Result Response Sample.....	83
8.10	/IEWS/PATIENTS: ERROR/STATUS RESPONSE SAMPLE.....	84
<b>9</b>	<b>/IEWS/PRESCRIPTIONS</b> .....	<b>85</b>
9.1	/IEWS/PRESCRIPTIONS OVERVIEW.....	85
9.2	FAILED REQUEST .....	86
9.3	ERRED REQUEST .....	86
9.4	/IEWS/PRESCRIPTIONS: REPORT REQUEST SAMPLE .....	86
9.5	/IEWS/PRESCRIPTIONS: RESPONSE SAMPLE.....	87
9.6	/IEWS/PRESCRIPTIONS: RESPONSE ERROR/STATUS SAMPLE .....	90
<b>10</b>	<b>/IEWS/USERS-STATUS</b> .....	<b>91</b>
10.1	/IEWS/USERS-STATUS OVERVIEW .....	91
10.2	/IEWS/USERS-STATUS: REQUEST SAMPLE FOR PRESCRIBER, NON-DEA PRACTITIONER, AND PHARMACIST .....	91
10.2.1	/IEWS/USERS-STATUS: REQUEST SAMPLE FOR DELEGATE.....	91
10.3	/IEWS/USERS-STATUS: RESPONSE SAMPLE FOR PRESCRIBER, NON-DEA PRACTITIONER, AND PHARMACIST STATUS .....	93
10.4	/IEWS/USERS-STATUS: RESPONSE SAMPLE FOR DELEGATE-AUTHORIZING USER RELATIONSHIP STATUS .....	93
10.5	/IEWS/USERS-STATUS: RESPONSE ERROR SAMPLE.....	94
<b>11</b>	<b>/IEWS/ENTITY-STATUS</b> .....	<b>94</b>
11.1	/IEWS/ENTITY-STATUS OVERVIEW.....	94
11.2	/IEWS/ENTITY-STATUS: REQUEST SAMPLE .....	94
11.3	/IEWS/ENTITY-STATUS: RESPONSE SAMPLE.....	95

# CURES Information Exchange Web Service Implementation Guide

11.4	/IEWS/ENTITY-STATUS: RESPONSE ERROR SAMPLE .....	95
<b>13</b>	<b>TESTING .....</b>	<b>96</b>
<b>14</b>	<b>APPENDIX - CODED VALUES.....</b>	<b>98</b>
14.1	PAYMENT TYPE CODES .....	98
14.2	INTERSTATE RESPONSE CODES.....	98

## **1 INTRODUCTION**

### **1.1 Purpose**

The purpose of this Implementation Guide is to provide a comprehensive set of instructions to allow integration of Controlled Substance Utilization Review and Evaluation System (CURES) information with qualified Health Information Technology (HIT) systems via the CURES Information Exchange Web service (IEWS).

## **2 SYSTEM OVERVIEW**

### **2.1 System Background**

The Controlled Substance Utilization Review and Evaluation System (CURES) is a database containing information about Schedule II, III, IV, and V controlled substances dispensed to patients, as reported by the dispensing pharmacy, clinic, or other dispenser pursuant to Health and Safety Code section 11165(d) or by prescribers, pursuant to Health and Safety Code section 11190(c) ("CURES data"). The CURES Program grants authorized healthcare practitioners and pharmacists access to query the CURES database to assist them in their efforts to ensure appropriate prescribing, ordering, administering, furnishing, and dispensing of controlled substances.

In accordance with Health and Safety Code 11165.1(a)(1)(F), the California Department of Justice (DOJ) has established a method of system integration whereby approved health care practitioners and pharmacists may use a qualified HIT system to access information from CURES. As a prerequisite to system integration, each entity that operates a HIT system must enter into a Memorandum of Understanding (MOU) with the California DOJ, addressing the technical specifications of the system to ensure the security of any data received through CURES and the secure transfer of data from the CURES.

Upon final issuance of regulations, AB1751 authorized the Department of Justice to enter into an agreement with any entity operating an interstate data sharing hub, or any agency operating a prescription drug monitoring program in another state, for purposes of interstate data sharing of prescription information. Accordingly, CURES IEWS offers authorized healthcare practitioners and pharmacists the ability to request interstate data from those entities operating an interstate data sharing hub, or any agency operating a prescription drug monitoring program in another state, where the entity has an MOU with California DOJ. Not all CURES users will be authorized to access another state's PDMP records, as these permissions are granted by the other state.

### **2.2 Definitions, Acronyms, and Abbreviation**

The Definitions, Acronyms, and Abbreviations section lists terms used in the document.



## CURES Information Exchange Web Service Implementation Guide

TERM/ABBREVIATION	DESCRIPTION
API	Application Program Interface
Authorizing User	An Authorizing User is defined in section 820(g) to mean “a Prescriber-User, Non-DEA Practitioner-User, or Pharmacist-User who delegates authority to a Delegate to access data in CURES on behalf of that Prescriber-User, Non-DEA Practitioner-User, or Pharmacist-User.”
CSR	Certificate Signing Request
CURES	Controlled Substance Utilization Review and Evaluation System
DEA	Drug Enforcement Administration
Delegate	A Delegate is defined in section 820(w) to mean “an individual who meets the eligibility requirements of section 824.1, subdivision (a), has entered into an agreement that meets the requirements of section 824.2, subdivision (a), and is at least 18 years of age.” Section 824.1(a) sets forth the following eligibility requirements: (a) Subject to the requirements of section 824.2, subdivision (a), an individual to whom authority is delegated by an Authorizing User may access data in CURES as a Delegate for that Authorizing User if the individual to whom authority is delegated qualifies as at least one of the following: (1) A Prescriber, Out-of-State Prescriber, Non-DEA Practitioner, Pharmacist, or Out-of-State Pharmacist, who is under the common control of the same Covered Entity as the Authorizing User. (2) An Authorized Health Care Provider who is under the common control of the same Covered Entity as the Authorizing User. (3) A Workforce Member who needs access to Protected Health Information to carry out the Workforce Member’s duties. (4) A Veterinary Workforce Member who needs access to Personal Identifying Information to carry out the Veterinary Workforce Member’s duties.
DOB	Date of Birth
DOJ	Department of Justice
Healthcare Entity	An entity that operates, or provides or makes available, a health information technology system to a health care practitioner or pharmacist.
HIT System	Health Information Technology System
HTTP	Hypertext Transfer Protocol
HTTPS	HTTPS is not, strictly, a separate protocol, as the data is still transferred using HTTP; however, instead of using plain text socket communication, the session data is encrypted using a version of the Secure Socket Layer (SSL)/Transport Layer Security (TLS) protocols, thus ensuring reasonable protection more than the HTTP
Interstate Data Sharing Hub	Hubs that facilitate interstate data sharing.

TERM/ABBREVIATION	DESCRIPTION
IP	Internet Protocol
MOU	Memorandum of Understanding
NCPDP	National Council for Prescription Drug Programs
PAR	Patient Activity Report
PDMP	Prescription Drug Monitoring Program
PKI	Public Key Infrastructure
REST	Representational state transfer
SSL	Secure Socket Layer
TLS	Transport Layer Security
XML	Extensible Markup Language

### 2.3 Application Overview

The CURES Program provides system integration with the HIT community through RESTful web services. Information is exchanged using NCPDP SCRIPT 2023011 standard.

The following web service endpoints are available:

WEB SERVICE URL	WEB SERVICE DESCRIPTION
/iews/patients	<p>This web service supports two types of requests.</p> <ol style="list-style-type: none"> <li><b>CURES Data:</b> Searches the California CURES database for patient-prescription information for a given period using partial or exact match modes. Searches can be executed for the past 24 months.</li> <li><b>Interstate Data:</b> Searches other state PDMPs via an Interstate data-sharing hub for patient-prescription information for a given period. The requested state PDMPs execute the search per their defined search mode (exact or fuzzy/partial). Searches can be executed for the past 24 months.</li> </ol>

WEB SERVICE URL	WEB SERVICE DESCRIPTION
	<p>Not all CURES users will be authorized to access another state's PDMP records, as these permissions are granted by the other state.</p> <p>CURES Data requests and Interstate Data requests cannot be comingled.</p>
/IEWS/prescriptions	<p>For a HIT system that can support a picklist, the Patient Account Number(s) from the <b>/IEWS/patients</b> (RxHistoryResponse message) is used to obtain a patient activity report (PAR) via this endpoint.</p>
/IEWS/users-status	<p>Retrieves the CURES user account status.</p>
/IEWS/entity-status	<p>Retrieves the HIT system account status.</p>

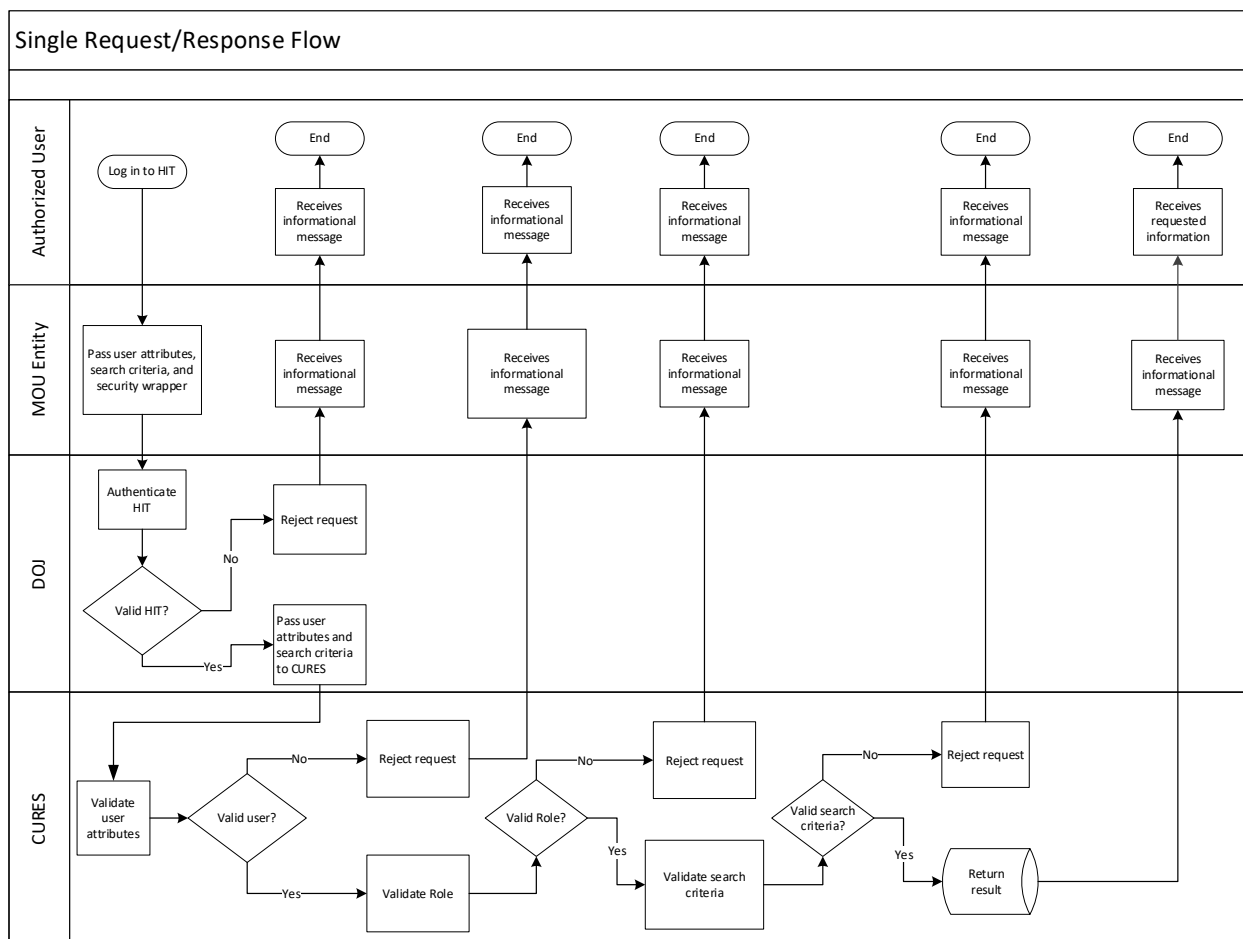
### 2.3.1 Patient/Prescriptions

CURES IEWS supports two patient-prescription search use cases:

**2.3.1.1 Query Use Case 1 – CURES and Interstate Data: Patient Match/Response**

- Use Case 1 follows the NCPDP standard where every **/iews/patients** request returns a single response. Interstate data requests are supported via this use case.
  - CURES data request: the result will be a status message stating there is no match, or the response will return the prescription history associated to a *single* matched entity via a RxHistoryResponse message. (Refer [Status/Error Codes](#) for details.)
  - Interstate data request: the result will be a response via a RxHistoryResponse message.

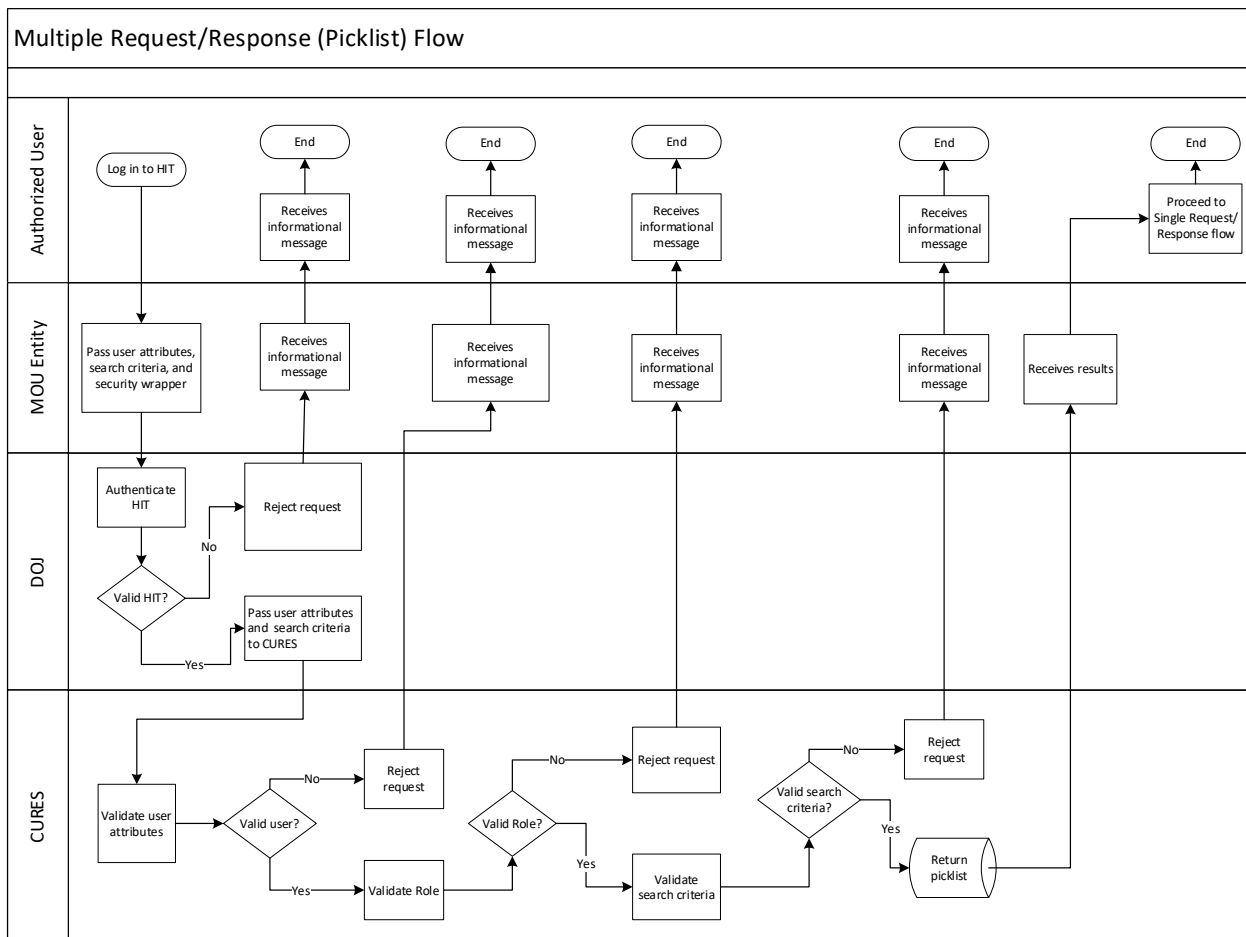
**Figure 1 – Single Request/Response**



**2.3.1.2 Query Use Case 2 – CURES and Interstate Data: Multiple Patient Matched (Picklist)**

- Use Case 2 supports multiple patient matched via a picklist. In this use case, a patient search returns multiple entities using the RxHistoryResponse message. The requesting entity would then send one or multiple single requests to retrieve the prescription history associated with the matched entity via the **/IEWS/prescriptions** web service.
  - For HIT systems that cannot support this functionality, a status message is returned (refer to [Status/Error Codes](#) for details).

**Figure 2 – Multiple Request/Response**



**2.3.2 Account Status Check**

In addition to the patient-prescription search, CURES IEWS provides two web services to query for account status via a Verify message. These services allow HIT systems to troubleshoot and alter process flows based on the HIT’s account status and users’ account status:

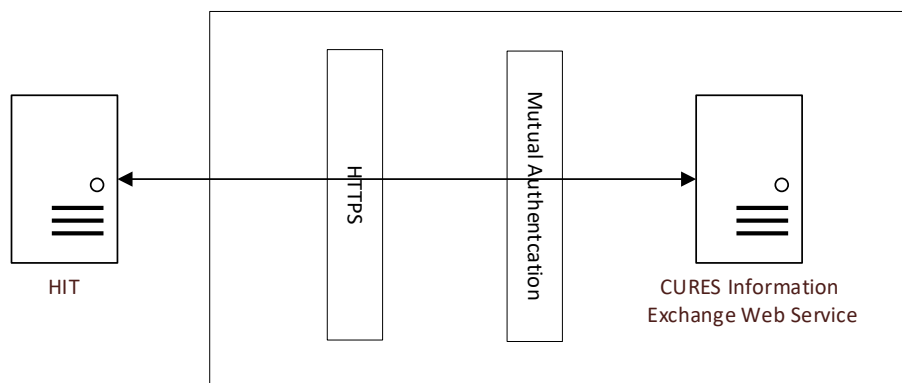
- HIT systems may verify the CURES user account status and delegate-Authorizing User relationship statuses via the **/IEWS/users-status** web service.
- HIT systems may verify their own account status via the **/IEWS/entity-status** web service.

### 3 AUTHENTICATION

#### 3.1 Security Layers

CURES IEWS has two layers of security. Each layer is built on top of the previous layer to ensure the secure exchange of information. Each REST endpoint is stateless, resulting in every request going through two layers.

Figure 3 – Security Layers



##### 3.1.1 Network Communication Security

Communication between CURES IEWS and HIT systems is over the Internet. As a result, Transport Layer Security (TLS) is required to ensure secure communication between CURES IEWS and HIT systems. CURES IEWS only supports TLS 1.2 or 1.3.

##### 3.1.2 Access Security

After entering into a MOU with the DOJ, the entity operating the HIT system will be authenticated by their client certificate. HIT systems will also verify that they are communicating to the correct server by verifying the server certificate. Once authenticated, HIT systems will be provisioned with a CURES IEWS account. Every RESTful web service request is mutually authenticated to ensure the account is valid and in good standing.

#### 3.2 Mutual Authentication

Mutual authentication, also called two-way authentication, is a process or technology in which both entities in a communications link authenticate each other. In a network environment, the client authenticates the server and vice-versa. This way, network users can be assured that they

are doing business exclusively with legitimate entities and servers can be certain that all would-be users are attempting to gain access for legitimate purposes.

HIT systems need to provide a user client certificate to CURES before they can setup connections with CURES. There are a few ways to do this. The typical steps are, 1. Create a CSR (Certificate Signing Request). 2. Get the CSR signed. 3. Convert the certificates to the right formats.

Before creating certificates, HIT systems need to work with CURES Program to decide the CN (Common Name) in certificates. This CN will also be used as the username in CURES.

Here is an example with OpenSSL software. For more information regarding the OpenSSL, you can view <https://www.openssl.org/>.

- **Create Certificate Signing Request (CSR)**

When creating CSR, MOU entities need to get a Common Name from DOJ. This name will be used as the login ID in Cures.

```
C:\OpenSSL\bin>openssl.exe req -new -newkey rsa:2048 -nodes -days 365 -keyout
cures_priv.key -out cures_svr.csr
Generating a 2048 bit RSA private key
.....+++
.....+++
writing new private key to 'cures_priv.key'
-----
You are about to be asked to enter information that will be incorporated
into your certificate request.
What you are about to enter is what is called a Distinguished Name or a DN.
There are quite a few fields but you can leave some blank
For some fields there will be a default value,
If you enter '.', the field will be left blank.
-----
Country Name (2 letter code) [AU]:US
State or Province Name (full name) [Some-State]:California
Locality Name (e.g., city) []:Sacramento
Organization Name (e.g., company) [Internet Widgits Pty Ltd]:DOJ
Organizational Unit Name (e.g., section) []:CURES
Common Name (e.g. server FQDN or YOUR name) []:MOUTEST
Email Address []:john.doe@doj.ca.gov

Please enter the following 'extra' attributes
to be sent with your certificate request
A challenge password []:Password
An optional company name []:
```

```
C:\OpenSSL\bin>
```

- **Sign the CSR**

The generated CSR must be signed by a public Certificate Authority (CA). Each organization may have different policies on which CA they choose. Please work with your security group on signing the CSR for your specified operating system. After the CSR is signed, please provide the public certificate to DOJ. All certificates must be in **.pem** format **without** the intermediate and root.

## **4 AUDITING**

### **4.1 Audit Data**

The HIT system is required to provide the following details for every patient request:

- 1. Request Data**

- a) The date of the query
- b) The time of the query
- c) Requesting entity operating the HIT system
- d) Requesting healthcare entity

- 2. Requestor Data** (refer to [/IEWS/patients Overview](#) for details)

- a) Identification information for the Prescriber, Non-DEA Practitioner, or Pharmacist.
- b) For Delegate requests, identification information for the Delegate and identification information for the Authorizing User

- 3. Required Patient Query Data**

- a) Patient First Name
- b) Patient Last Name
- c) Patient Gender
- d) Patient Date of Birth
- e) Query Date Range

The HIT system may provide the following optional data fields for the patient request:

- a) Patient Street Address.
- b) Patient City.
- c) Patient State/Province.
- d) Patient Postal Code (5 digits).
- e) PDMP State for an interstate data query.

CURES IEWS captures all this information. The application also tracks patient searches and the associated PARs.



## 5 DATA MAPPING

CURES IEWS uses the following mapping to transform data from CURES to the NCPDP request and response messages.

### 5.1 /iews/patients - Request Mapping of CURES and Interstate Data to NCPDP Format

Section		CURES	NCPDP	Attribute	Required/Optional	
Message	Message	Message	SCRIPT.Message	DatatypesVersion="2023011" TransportVersion="2023011" TransactionVersion="2023011" StructuresVersion="2023011" ECLVersion="2023011" TransactionDomain="SCRIPT"	Required	
	Header	Message Envelope	Recipient of the Message	SCRIPT.Message.Header.To	Qualifier="ZZZ"	Required
			Healthcare Entity (the name of the healthcare entity (business) from which this request was sent)	SCRIPT.Message.Header.From	Qualifier="ZZZ"	Required
			Unique MessageID	SCRIPT.Message.Header.MessageID		Required
			Sent Date/Time	SCRIPT.Message.Header.SentTime		Required
			User ID of the Requesting Entity	SCRIPT.Message.Header.Security.UsernameToken.Username		Required
			HIT System Hospital/Facility	SCRIPT.Message.Header.Security.Sender.SecondaryIdentification		Required
			Description of Facility (Emergency, ICU)	SCRIPT.Message.Header.Security.Sender.TertiaryIdentification		Optional
			Sender Software Developer	SCRIPT.Message.Header.SenderSoftware.SenderSoftwareDeveloper		Required
			Sender Software Product	SCRIPT.Message.Header.SenderSoftware.SenderSoftwareProduct		Required
	Sender Software Version Release	SCRIPT.Message.Header.SenderSoftware.SenderSoftwareVersionRelease		Required		
	Body	Benefits Coordination	Consent	SCRIPT.Message.Body.RxHistoryRequest.BenefitsCoordination.Consent [value = Y]		Required
			Patient Last Name	SCRIPT.Message.Body.RxHistoryRequest.Patient.HumanPatient.Names.Name.LastName		Required
Patient		Patient First Name	SCRIPT.Message.Body.RxHistoryRequest.Patient.HumanPatient.Names.Name.FirstName		Required	
		Patient Gender – A value must be specified: U = Unspecified F = Female M = Male	SCRIPT.Message.Body.RxHistoryRequest.Patient.HumanPatient.GenderAndSex.AdministrativeGender [value = U, F, or M]		Required • If 'M' or 'F' is specified for Interstate data requests, it is ignored.	

# CURES Information Exchange Web Service Implementation Guide

Section	CURES	NCPDP	Attribute	Required/Optional
Prescriber/Non-DEA Practitioner/Pharmacist Requestor or Delegate's Authorizing User	Patient DOB – YYYY-MM-DD	SCRIPT.Message.Body.RxHistoryRequest.Patient.HumanPatient.DateOfBirth.Date		Required
	Patient Address	SCRIPT.Message.Body.RxHistoryRequest.Patient.HumanPatient.Address.AddressLine1		<ul style="list-style-type: none"> <li>Optional for CURES data requests</li> <li>Ignored If provided for Interstate data requests</li> </ul>
	Patient City	SCRIPT.Message.Body.RxHistoryRequest.Patient.HumanPatient.Address.City		<ul style="list-style-type: none"> <li>Optional for CURES data requests</li> <li>Ignored If provided for Interstate data requests</li> </ul>
	Patient State/Province – 2-character state/province abbreviation	SCRIPT.Message.Body.RxHistoryRequest.Patient.HumanPatient.Address.StateProvince		<ul style="list-style-type: none"> <li>Optional for CURES data requests</li> <li>Ignored If provided for Interstate data requests</li> </ul>
	Patient Postal Code – 5-digit postal code	SCRIPT.Message.Body.RxHistoryRequest.Patient.HumanPatient.Address.PostalCode		<ul style="list-style-type: none"> <li>Optional for CURES data requests</li> <li>Ignored If provided for Interstate data requests</li> </ul>
	<b>Prescriber and Non-DEA Practitioner</b>			
	Prescriber/Non-DEA Practitioner State License Number	SCRIPT.Message.Body.RxHistoryRequest.Prescriber.NonVeterinarian.Identification.StateLicenseNumber		Required if the Requestor or Authorizing User is a Prescriber or Non-DEA Practitioner
	Prescriber DEA Number	SCRIPT.Message.Body.RxHistoryRequest.Prescriber.NonVeterinarian.Identification.DEANumber		Optional
	Prescriber/Non-DEA Practitioner NPI	SCRIPT.Message.Body.RxHistoryRequest.Prescriber.NonVeterinarian.Identification.NPI		Required if the Requestor or Authorizing User is a Prescriber or Non-DEA Practitioner
	Prescriber/Non-DEA Practitioner Last Name	SCRIPT.Message.Body.RxHistoryRequest.Prescriber.NonVeterinarian.Names.Names.Name.LastName		Required if the Requestor or Authorizing User is a Prescriber or Non-DEA Practitioner
	Prescriber/Non-DEA Practitioner First Name	SCRIPT.Message.Body.RxHistoryRequest.Prescriber.NonVeterinarian.Names.Names.Name.FirstName		Required if the Requestor or Authorizing User is a Prescriber or Non-DEA Practitioner
	<b>Pharmacist</b>			
	Pharmacist State License Number	SCRIPT.Message.Body.RxHistoryRequest.Pharmacy.Pharmacist.Identification.StateLicenseNumber		Required if the Requestor or Authorizing User is a Pharmacist
	Pharmacist Last Name	SCRIPT.MessageBody.RxHistoryRequest.Pharmacy.Pharmacist.Names.Names.Name.LastName		Required if the Requestor or Authorizing User is a Pharmacist
	Pharmacist First Name	SCRIPT.Message.Body.RxHistoryRequest.Pharmacy.Pharmacist.Names.Names.Name.FirstName		Required if the Requestor or Authorizing User is a Pharmacist
Business Name	SCRIPT.Message.Body.RxHistoryRequest.Pharmacy.BusinessName		Required if the Requestor or Authorizing User is a Pharmacist	
Query Date Range	Search Period - Range Start	SCRIPT.Message.Body.RxHistoryRequest.RequestedDates.StartDate.Date		Required
	Search Period - Range End	SCRIPT.Message.Body.RxHistoryRequest.RequestedDates.EndDate.Date		Required
Interstate Data Request (required)	Other State PDMP to Query	SCRIPT.Message.Body.RxHistoryRequest.PDMPStatesRequested.StateProvince		Optional

# CURES Information Exchange Web Service Implementation Guide

Section		CURES	NCPDP	Attribute	Required/Optional
	for an Interstate data request)				
	Delegate Requestor	Delegate Last Name	SCRIPT.Message.Body.RxHistoryRequest.Requestor.RequestorName.Name.LastName		Required if the Requestor is a Delegate
		Delegate First Name	SCRIPT.Message.Body.RxHistoryRequest.Requestor.RequestorName.Name.FirstName		Required if the Requestor is a Delegate

## 5.1.1 /views/patients (CURES Data Response for Single Patient Matched) - Response Mapping of CURES Data to NCPDP Format

Section		CURES	NCPDP	Attribute	
XML Declaration		N/A	N/A	xml version="1.0" encoding="UTF-8" standalone="yes"	
Message	Message	Message	SCRIPT.Message	DatatypesVersion="2023011" TransportVersion="2023011" TransactionDomain="SCRIPT" TransactionVersion="2023011" StructuresVersion="2023011" ECLVersion="2023011"	
	Header	Message Envelope	Recipient of the Message	SCRIPT.Message.Header.To	Qualifier="ZZZ"
			Sender of the Message	SCRIPT.Message.Header.From	Qualifier="ZZZ"
			Unique MessageID	SCRIPT.Message.Header.MessageID	
			Relates to MessageID	SCRIPT.Message.Header.RelatesToMessageID [value = MessageID for RxHistoryRequest]	
			Sent Date/Time	SCRIPT.Message.Header.SentTime	
			Sender Software Developer	SCRIPT.Message.Header.SenderSoftware.SenderSoftwareDeveloper	
			Sender Software Product	SCRIPT.Message.Header.SenderSoftware.SenderSoftwareProduct	
	Sender Software Version Release	SCRIPT.Message.Header.SenderSoftware.SenderSoftwareVersionRelease			
	Body	Response	Response	SCRIPT.Message.Body.RxHistoryResponse.Response.Approved	
		Benefits Coordination	Consent	SCRIPT.Message.Body.RxHistoryRequest.BenefitsCoordination.Consent [value = Y]	
Patient		Patient Account Number	SCRIPT.Message.Body.RxHistoryResponse.Patient.HumanPatient.Identification.PatientAccountNumber		

# CURES Information Exchange Web Service Implementation Guide

Section		CURES	NCPDP	Attribute
		Last Name	SCRIPT.Message.Body.RxHistoryResponse.Patient.HumanPatient.Names.Names.Name.LastName	
		First Name	SCRIPT.Message.Body.RxHistoryResponse.Patient.HumanPatient.Names.Names.Name.FirstName	
		Gender	SCRIPT.Message.Body.RxHistoryResponse.Patient.HumanPatient.GenderAndSex.AdministrativeGender	
		DOB	SCRIPT.Message.Body.RxHistoryResponse.Patient.HumanPatient.DateOfBirth.Date	
		Address	SCRIPT.Message.Body.RxHistoryResponse.Patient.HumanPatient.Address.AddressLine1	
		City	SCRIPT.Message.Body.RxHistoryResponse.Patient.HumanPatient.Address.City	
		State/Province	SCRIPT.Message.Body.RxHistoryResponse.Patient.HumanPatientAddress.StateProvince	
		Postal Code	SCRIPT.Message.Body.RxHistoryResponse.Patient.HumanPatient.Address.PostalCode	
		Species (attribute is provided when patient is an Animal)	SCRIPT.Message.Body.RxHistoryResponse.Patient.HumanPatient.Extension.String [value = Animal]	name = "Species" url = "https://cures.doj.ca.gov/extensions/patient/species"
		Pet Name (attribute is provided when patient is an Animal)	SCRIPT.Message.Body.RxHistoryResponse.Patient.HumanPatient.Extension.String	name = "Pet Name" url = "https://cures.doj.ca.gov/extensions/patient/animalname"
	Prescription <b>[1..300]</b>	Drug Name, Strength, Form (values separated by   ) Note: if the reported NDC failed validation, the reported NDC is displayed with an asterisk.	SCRIPT.Message.Body.RxHistoryResponse.MedicationDispensed.DrugDescription	
		NDC Number (product code)	SCRIPT.Message.Body.RxHistoryResponse.MedicationDispensed.Product.DrugCoded.NDC	
		Drug Quantity	SCRIPT.Message.Body.RxHistoryResponse.MedicationDispensed.Quantity.Value	
		Code List Qualifier	SCRIPT.Message.Body.RxHistoryResponse.MedicationDispensed.Quantity.CodeListQualifier [default value = 87]	
		Unit Source Code	SCRIPT.Message.Body.RxHistoryResponse.MedicationDispensed.Quantity.QuantityUnitofMeasure.Code [value = C38046]	
		Days Supply	SCRIPT.Message.Body.RxHistoryResponse.MedicationDispensed.DaysSupply	
		Date Filled	SCRIPT.Message.Body.RxHistoryResponse.MedicationDispensed.LastFillDate.Date	
		Substitutions	SCRIPT.Message.Body.RxHistoryResponse.MedicationDispensed.Substitutions [default value = 0]	
		Refills Authorized	SCRIPT.Message.Body.RxHistoryResponse.MedicationDispensed.Note	
Serialized Prescription Form Number	SCRIPT.Message.Body.RxHistoryResponse.MedicationDispensed.HistoryPrescriberOrderNumber			

# CURES Information Exchange Web Service Implementation Guide

Section		CURES	NCPDP	Attribute
		Pharmacy NCPDPID	SCRIPT.Message.Body.RxHistoryResponse.MedicationDispensed.Pharmacy.Identification.NCPDPID [default value = -]	
		Pharmacy Number	SCRIPT.Message.Body.RxHistoryResponse.MedicationDispensed.Pharmacy.Identification.StateLicenseNumber	
		Pharmacy NPI	SCRIPT.Message.Body.RxHistoryResponse.MedicationDispensed.Pharmacy.Identification.NPI [default value = -]	
		Pharmacy Name	SCRIPT.Message.Body.RxHistoryResponse.MedicationDispensed.Pharmacy.BusinessName	
		Pharmacy Address	SCRIPT.Message.Body.RxHistoryResponse.MedicationDispensed.Pharmacy.Address.AddressLine1	
		Pharmacy City	SCRIPT.Message.Body.RxHistoryResponse.MedicationDispensed.Pharmacy.Address.Address.City	
		Pharmacy State	SCRIPT.Message.Body.RxHistoryResponse.MedicationDispensed.Pharmacy.Address.StateProvince	
		Pharmacy Postal Code	SCRIPT.Message.Body.RxHistoryResponse.MedicationDispensed.Pharmacy.Address.PostalCode	
		Prescriber DEA	SCRIPT.Message.Body.RxHistoryResponse.MedicationDispensed.Prescriber.NonVeterinarian.Identification.DEANumber	
		Prescriber NPI	SCRIPT.Message.Body.RxHistoryResponse.MedicationDispensed.Prescriber.NonVeterinarian.Identification.NPI [default value = -]	
		Prescriber Name (prescriber name is captured in the First and Last Name fields)	SCRIPT.Message.Body.RxHistoryResponse.MedicationDispensed.Prescriber.NonVeterinarian.Names.Names.Name.LastName	
		Prescriber's Name (prescriber name is captured in the First and Last Name fields)	SCRIPT.Message.Body.RxHistoryResponse.MedicationDispensed.Prescriber.NonVeterinarian.Names.Names.Name.FirstName	
		Prescriber City	SCRIPT.Message.Body.RxHistoryResponse.MedicationDispensed.Prescriber.NonVeterinarian.Address.City	
		Pharmacy Prescription Number Qualifier	SCRIPT.Message.Body.RxHistoryResponse.MedicationDispensed.HistorySource.Source.SourceQualifier [value = Pharmacy]	
		Pharmacy Prescription Number	SCRIPT.Message.Body.RxHistoryResponse.MedicationDispensed.HistorySource.SourceReference	
		Prescription Refill Number	SCRIPT.Message.Body.RxHistoryResponse.MedicationDispensed.HistorySource.FillNumber	
		Payment Type	SCRIPT.Message.Body.RxHistoryResponse.MedicationDispensed.HistorySource.PaymentType	
		Date Sold (if Date Sold was not reported, date value is 1900-01-01)	SCRIPT.Message.Body.RxHistoryResponse.MedicationDispensed.OtherMedicationDates.OtherMedicationDate.Date	
		Date Sold Qualifier	SCRIPT.Message.Body.RxHistoryResponse.MedicationDispensed.OtherMedicationDate.OtherMedicationDateQualifier [value = SoldDate]	
		Daily MME (attribute is provided when a calculated MME value exists)	SCRIPT.Message.Body.RxHistoryResponse.MedicationDispensed.Extension.Decimal	name = "Daily MME" url = "https://cures.doj.ca.gov/extensions/prescriptions/dailymme"
		Total MME (attribute is provided when a calculated MME value exists)	SCRIPT.Message.Body.RxHistoryResponse.MedicationDispensed.Extension.Decimal	name = "Total MME"

# CURES Information Exchange Web Service Implementation Guide

Section		CURES	NCPDP	Attribute
				url= "https://cures.doj.ca.gov/extensions/prescriptio ns/totalmme"
		State PDMP Where the Record Originated	SCRIPT.Message.Body.RxHistoryResponse.MedicationDispensed.Extension.String	name = "Originating State" url = "https://cures.doj.ca.gov/extensions/prescriptio ns/originatingstate"
	Search	Search Time - Range Start	SCRIPT.Message.Body.RxHistoryResponse.RequestedDates.StartDate.Date	
		Search Time - Range End	SCRIPT.Message.Body.RxHistoryResponse.RequestedDates.EndDate.Date	

## 5.1.2 /iews/patients (CURES Data Response for Multiple Patients Matched) - Response Mapping of CURES Data to NCPDP Format

Section		CURES	NCPDP	Attribute	
XML Declaration		N/A	N/A	xml version="1.0" encoding="UTF-8" standalone="yes"	
Message	Message	Message	SCRIPT.Message	DatatypesVersion="2023011" TransportVersion="2023011" TransactionDomain="SCRIPT" TransactionVersion="2023011" StructuresVersion="2023011" ECLVersion="2023011"	
	Header	Message Envelope	Recipient of the Message	SCRIPT.Message.Header.To	Qualifier="ZZZ"
			Sender of the Message	SCRIPT.Message.Header.From	Qualifier="ZZZ"
			Unique MessageID	SCRIPT.Message.Header.MessageID	
			Relates to MessageID	SCRIPT.Message.Header.RelatesToMessageID [value = MessageID for RxHistoryRequest]	
			Sent Date/Time	SCRIPT.Message.Header.SentTime	
			Sender Software Developer	SCRIPT.Message.Header.SenderSoftware.SenderSoftwareDeveloper	

# CURES Information Exchange Web Service Implementation Guide

Section		CURES	NCPDP	Attribute	
Body		Sender Software Product	SCRIPT.Message.Header.SenderSoftware.SenderSoftwareProduct		
		Sender Software Version Release	SCRIPT.Message.Header.SenderSoftware.SenderSoftwareVersionRelease		
	Response	Response	SCRIPT.Message.Body.RxHistoryResponse.Response.Denied		
		Benefits Coordination	Consent	SCRIPT.Message.Body.RxHistoryRequest.BenefitsCoordination.Consent [value = Y]	
	PAR Search Criteria		Patient Last Name	SCRIPT.Message.Body.RxHistoryResponse.Patient.HumanPatient.Names.Names.Name.LastName	
			Patient First Name	SCRIPT.Message.Body.RxHistoryResponse.Patient.Patient.HumanPatient.Names.Names.Name.FirstName	
			Patient Gender	SCRIPT.Message.Body.RxHistoryResponse.Patient.PatientPatient.GenderAndSex.AdministrativeGender.HumanPatient.GenderAndSex.AdministrativeGender	
			Patient DOB	SCRIPT.Message.Body.RxHistoryResponse.Patient.Patient.HumanPatient.DateOfBirth.Date	
			Patient Address	SCRIPT.Message.Body.RxHistoryResponse.Patient.Patient.HumanPatient.Address.AddressLine1	
			Patient City	SCRIPT.Message.Body.RxHistoryResponse.Patient.Patient.HumanPatient.Address.City	
			Patient State/Province	SCRIPT.Message.Body.RxHistoryResponse.Patient.Patient.HumanPatient.Address.StateProvince	
			Postal Code	SCRIPT.Message.Body.RxHistoryResponse.Patient.Patient.HumanPatient.Address.PostalCode	
	Patient Picklist <b>(1...300)</b>		Drug Name	SCRIPT.Message.Body.RxHistoryResponse.MedicationDispensed.DrugDescription [default value = Use Patient Account Number(s) from this response and execute the <a href="#">/iew/prescriptions</a> web service to obtain a PAR. ]	
			Drug Quantity	SCRIPT.Message.Body.RxHistoryResponse.MedicationDispensed.Quantity.Value [value = 0]	
			Code List Qualifier	SCRIPT.Message.Body.RxHistoryResponse.MedicationDispensed.Quantity.CodeListQualifier [value = 87]	
			Unit Source Code	SCRIPT.Message.Body.RxHistoryResponse.MedicationDispensed.Quantity.QuantityUnitofMeasure.Code [value = C38046]	
			Date Filled	SCRIPT.Message.Body.RxHistoryResponse.MedicationDispensed.LastFillDate.Date [value = 1900-01-01]	
			Substitutions	SCRIPT.Message.Body.RxHistoryResponse.MedicationDispensed.Substitutions [value = 0]	
			Number of RX for Patient	SCRIPT.Message.Body.RxHistoryResponse.MedicationDispensed.Note	
			Patient Account Number (use to obtain a PAR via the <a href="#">/iew/prescriptions</a> web service)	SCRIPT.Message.Body.RxHistoryResponse.MedicationDispensed.Patient.Identification.PatientAccountNumber	
			Patient Last Name	SCRIPT.Message.Body.RxHistoryResponse.MedicationDispensed.Patient.Names.Names.Name.LastName	
			Patient First Name	SCRIPT.Message.Body.RxHistoryResponse.MedicationDispensed.Patient.Names.Names.Name.FirstName	
			Patient Gender	SCRIPT.Message.Body.RxHistoryResponse.MedicationDispensed.Patient.GenderAndSex.AdministrativeGender	
			Patient DOB	SCRIPT.Message.Body.RxHistoryResponse.MedicationDispensed.Patient.DateOfBirth.Date	
			Patient Address	SCRIPT.Message.Body.RxHistoryResponse.MedicationDispensed.Patient.Address.AddressLine1	

# CURES Information Exchange Web Service Implementation Guide

Section		CURES	NCPDP	Attribute
		Patient City	SCRIPT.Message.Body.RxHistoryResponse.MedicationDispensed.Patient.Address.City	
		Patient State	SCRIPT.Message.Body.RxHistoryResponse.MedicationDispensed.Patient.Address.StateProvince	
		Patient Postal Code	SCRIPT.Message.Body.RxHistoryResponse.MedicationDispensed.Patient.Address.PostalCode	
		Species (attribute is provided when patient is an Animal)	SCRIPT.Message.Body.RxHistoryResponse.MedicationDispensed.Patient.Extension.String	name="Species" url="https://cures.doj.ca.gov/extensions/patient/species"
		Pet Name (attribute is provided when patient is an Animal)	SCRIPT.Message.Body.RxHistoryResponse.MedicationDispensed.Patient.String	name="Pet Name" url="https://cures.doj.ca.gov/extensions/patient/animalName"
		Date Sold	SCRIPT.Message.Body.RxHistoryResponse.MedicationDispensed.OtherMedicationDates.OtherMedicationDate.Date [value = 1900-01-01]	
		Date Sold Qualifier	SCRIPT.Message.Body.RxHistoryResponse.MedicationDispensed.OtherMedicationDate.OtherMedicationDateQualifier [value = SoldDate]	
	Search	Search Period - Range Start	SCRIPT.Message.Body.RxHistoryResponse.RequestedDates.StartDate.Date	
		Search Period - Range End	SCRIPT.Message.Body.RxHistoryResponse.RequestedDates.EndDate.Date	



### 5.1.3 /iews/patients (Interstate Data Response for Single Patient Matched) –Response Mapping of Interstate Data to NCPDP Format

\*\*Interstate Data is received by CURES via the NIEM XML-based information exchange framework. The NIEM elements are mapped to CURES elements. The table below maps the CURES elements to NCPDP elements and NIEM elements.

Section		CURES	NCPDP	NIEM	Attribute	
XML Declaration		N/A	N/A	N/A	xml version="1.0" encoding="UTF-8" standalone="yes"	
Message	Message	Message	SCRIPT.Message	N/A	DatatypesVersion="2023011" TransportVersion="2023011" TransactionDomain="SCRIPT" TransactionVersion="2023011" StructuresVersion="2023011" ECLVersion="2023011"	
	Header	Message Envelope	Recipient of the Message	SCRIPT.Message.Header.To	N/A	Qualifier="ZZZ"
			Sender of the Message	SCRIPT.Message.Header.From	N/A	Qualifier="ZZZ"
			Unique MessageID	SCRIPT.Message.Header.MessageID	N/A	
			Relates to MessageID	SCRIPT.Message.Header.RelatesToMessageID [value = MessageID for RxHistoryRequest]	N/A	
			Sent Date/Time	SCRIPT.Message.Header.SentTime	N/A	
			Sender Software Developer	SCRIPT.Message.Header.SenderSoftware.SenderSoftwareDeveloper	N/A	
			Sender Software Product	SCRIPT.Message.Header.SenderSoftware.SenderSoftwareProduct	N/A	
			Sender Software Version Release	SCRIPT.Message.Header.SenderSoftware.SenderSoftwareVersionRelease	N/A	
	Body	Response	Response	SCRIPT.Message.Body.RxHistoryResponse.Response.Approved	N/A	
		Benefits Coordination	Consent	SCRIPT.Message.Body.RxHistoryRequest.BenefitsCoordination.Consent [default value = Y]	N/A	
		Interstate Patient	Patient Last Name	SCRIPT.Message.Body.RxHistoryResponse.Patient.HumanPatient.Names.Name.LastName	pmp:Prescription.pmp:Patient.nc:PersonName.nc:PersonSurname	
			Patient First Name	SCRIPT.Message.Body.RxHistoryResponse.Patient.Patient.HumanPatient.Names.Name.FirstName	pmp:Prescription.pmp:Patient.nc:PersonName.nc:PersonGivenName	
			Patient Gender	SCRIPT.Message.Body.RxHistoryResponse.Patient.Patient.HumanPatient.GenderAndSex.AdministrativeGender	pmp:Prescription.pmp:Patient.nc:PersonSexCode	

# CURES Information Exchange Web Service Implementation Guide

Section		CURES	NCPDP	NIEM	Attribute
		Patient DOB	SCRIPT.Message.Body.RxHistoryResponse.Patient.Patient.HumanPatient.DateOfBirth.Date	pmp:Prescription.pmp:Patient.nc:PersonBirthDate.nc:Date	
		Patient Address	SCRIPT.Message.Body.RxHistoryResponse.Patient.Patient.HumanPatient.Address.AddressLine1	pmp:Prescription.pmp:Patient.pmp:PersonPrimaryContactInformation.nc:ContactMailingAddress.nc:StructuredAddress.nc:LocationStreet.nc:StreetFullText	
		Patient City	SCRIPT.Message.Body.RxHistoryResponse.Patient.Patient.HumanPatient.Address.City	pmp:Prescription.pmp:Patient.pmp:PersonPrimaryContactInformation.nc:ContactMailingAddress.nc:StructuredAddress.nc:LocationCityName	
		Patient State/Province	SCRIPT.Message.Body.RxHistoryResponse.Patient.Patient.HumanPatient.Address.StateProvince	pmp:Prescription.pmp:Patient.pmp:PersonPrimaryContactInformation.nc:ContactMailingAddress.nc:StructuredAddress.nc:LocationStateUSPostalServiceCode	
		Patient Postal Code	SCRIPT.Message.Body.RxHistoryResponse.Patient.Patient.HumanPatient.Address.PostalCode	pmp:Prescription.pmp:Patient.pmp:PersonPrimaryContactInformation.nc:ContactMailingAddress.nc:StructuredAddress.nc:LocationPostalCode	
		Species (attribute is provided when patient is an Animal)	SCRIPT.Message.Body.RxHistoryResponse.Patient.HumanPatient.Extension.String	name="Species" url="https://cures.doj.ca.gov/extensions/patient/species"	name="Species" url="https://cures.doj.ca.gov/extensions/patient/species"
		Pet Name (attribute is provided when patient is an Animal)	SCRIPT.Message.Body.RxHistoryResponse.Patient.HumanPatient.Extension.String	name="Pet Name" url="https://cures.doj.ca.gov/extensions/patient/animalname"	name="Pet Name" url="https://cures.doj.ca.gov/extensions/patient/animalname"
	Interstate Patient- Prescription Data Response (1..300)	Drug Name, Strength, Form (values separated by   )	SCRIPT.Message.Body.RxHistoryResponse.MedicationDispensed.DrugDescription	Drug Name: pmp:Prescription.pmp:PrescriptionDrug.pmp:DrugProductNameText  Strength: pmp:Prescription.pmp:PrescriptionDrug.pmp:DrugStrengthText  Form: pmp:Prescription.pmp:PrescriptionDrug.pmp:DrugUnitOfMeasureText	
	NDC Number (product code)	SCRIPT.Message.Body.RxHistoryResponse.MedicationDispensed.Product.DrugCoded.NDC	pmp:Prescription.pmp:PrescriptionDrug.pmp:DrugNDCProductIdentifier.nc:IdentificationID		

# CURES Information Exchange Web Service Implementation Guide

Section		CURES	NCPDP	NIEM	Attribute
		Product Code Qualifier	SCRIPT.Message.Body.RxHistoryResponse.MedicationDispensed.DrugCoded.ProductCode.Qualifier [default value = ND]	N/A	
		Drug Quantity	SCRIPT.Message.Body.RxHistoryResponse.MedicationDispensed.Quantity.Value	pmp:Prescription.pmp:PrescriptionDrug.pmp:DispensedQuantity	
		Code List Qualifier	SCRIPT.Message.Body.RxHistoryResponse.MedicationDispensed.Quantity.CodeListQualifier [default value = 87]	N/A	
		Unit Source Code	SCRIPT.Message.Body.RxHistoryResponse.MedicationDispensed.Quantity.QuantityUnitofMeasure.Code [value = C38046]	N/A	
		Days Supply	SCRIPT.Message.Body.RxHistoryResponse.MedicationDispensed.DaysSupply	pmp:Prescription.pmp:PrescriptionDrug.pmp:DaysSupplyCount	
		Date Filled	SCRIPT.Message.Body.RxHistoryResponse.MedicationDispensed.LastFillDate.Date	pmp:Prescription.pmp:PrescriptionFilledDate.nc:Date	
		Substitutions	SCRIPT.Message.Body.RxHistoryResponse.MedicationDispensed.Substitutions [default value = 0]	N/A	
		Refills Authorized	SCRIPT.Message.Body.RxHistoryResponse.MedicationDispensed.Note	Refills Authorized: pmp:Prescription.pmp:RefillsAuthorizedCount	
		Pharmacy NCPDPID	SCRIPT.Message.Body.RxHistoryResponse.MedicationDispensed.Pharmacy.Identification.NCPDPID [default value = -]	N/A	
		Pharmacy Number	SCRIPT.Message.Body.RxHistoryResponse.MedicationDispensed.Pharmacy.Identification.StateLicenseNumber	pmp:Prescription.Dispenser.pmp:StateLicenseIdentifier.nc:IdentificationID	
		Pharmacy NPI	SCRIPT.Message.Body.RxHistoryResponse.MedicationDispensed.Pharmacy.Identification.NPI [default value = -]	N/A	
		Pharmacy Name	SCRIPT.Message.Body.RxHistoryResponse.MedicationDispensed.Pharmacy.BusinessName	pmp:Prescription.pmp:Dispenser.nc:OrganizationName	
		Pharmacy Address (line 1)	SCRIPT.Message.Body.RxHistoryResponse.MedicationDispensed.Pharmacy.Address.AddressLine1	pmp:Prescription.pmp:Dispenser.nc:OrganizationLocation.nc:LocationAddress.nc:StructuredAddress.nc:LocationStreet.nc:StreetFullText	
		Pharmacy City	SCRIPT.Message.Body.RxHistoryResponse.MedicationDispensed.Pharmacy.Address.Address.City	pmp:Prescription.pmp:Dispenser.nc:OrganizationLocation.nc:LocationAddress.nc:StructuredAddress.nc:LocationCityName	
		Pharmacy State	SCRIPT.Message.Body.RxHistoryResponse.MedicationDispensed.Pharmacy.Address.StateProvince	pmp:Prescription.pmp:Dispenser.nc:OrganizationLocation.nc:LocationAddress.nc:StructuredAddress.nc:LocationStateUSPostalServiceCode	
		Pharmacy Postal Code	SCRIPT.Message.Body.RxHistoryResponse.MedicationDispensed.Pharmacy.Address.PostalCode	pmp:Prescription.pmp:Dispenser.nc:OrganizationLocation.nc:LocationAddress.nc:StructuredAddress.nc:LocationPostalCode	

# CURES Information Exchange Web Service Implementation Guide

Section		CURES	NCPDP	NIEM	Attribute
		Prescriber DEA	SCRIPT.Message.Body.RxHistoryResponse.MedicationDispensed.Prescriber.NonVeterinarian.Identification.DEANumber	pmp:Prescription.pmp:prescriber.pmp:DEANumberIdentifier.nc:IdentificationID	
		Prescriber NPI	SCRIPT.Message.Body.RxHistoryResponse.MedicationDispensed.Prescriber.NonVeterinarian.Identification.NPI [default value = -]	N/A	
		Prescriber Last Name, Prescriber First Name  (Last name and first name separated by ,.)  (Prescriber name is captured in the First and Last Name fields)	SCRIPT.Message.Body.RxHistoryResponse.MedicationDispensed.Prescriber.NonVeterinarian.Names.Name.LastName	Prescriber Last Name: pmp:Prescription.pmp:prescriber.nc:PersonName.nc:PersonSurnameName  Prescriber First Name: pmp:Prescription.pmp:prescriber.nc:PersonName.nc:PersonGivenName	
		Prescriber Last Name, Prescriber First Name  (Last name and first name separated by ,.)  (Prescriber name is captured in the First and Last Name fields)	SCRIPT.Message.Body.RxHistoryResponse.MedicationDispensed.Prescriber.NonVeterinarian.Names.Name.FirstName	Prescriber Last Name: pmp:Prescription.pmp:prescriber.nc:PersonName.nc:PersonSurnameName  Prescriber First Name: pmp:Prescription.pmp:prescriber.nc:PersonName.nc:PersonGivenName	
		Prescriber City	SCRIPT.Message.Body.RxHistoryResponse.MedicationDispensed.Prescriber.NonVeterinarian.Address.City	pmp:Prescription.pmp:PersonPrimaryContactInformation.nc:StructuredAddress.nc:LocationCityName	
		Pharmacy Prescription Number Qualifier	SCRIPT.Message.Body.RxHistoryResponse.MedicationDispensed.HistorySource.Source.SourceQualifier [default value = Pharmacy]	N/A	
		Pharmacy Prescription Number	SCRIPT.Message.Body.RxHistoryResponse.MedicationDispensed.HistorySource.SourceReference	pmp:Prescription.pmp:PrescriptionNumberText	
		Prescription Refill Number	SCRIPT.Message.Body.RxHistoryResponse.MedicationDispensed.HistorySource.FillNumber	pmp:Prescription.pmp:DrugRefillNumbercount	
		Payment Type	SCRIPT.Message.Body.RxHistoryResponse.MedicationDispensed.HistorySource.PaymentType	pmp:Prescription.pmp:MethodOfPaymentCode	
		Date Sold (if Date Sold was not provided, date value is 1900-01-01)	SCRIPT.Message.Body.RxHistoryResponse.MedicationDispensed.OtherMedicationDates.OtherMedicationDate.Date	N/A	
		Date Sold Qualifier	SCRIPT.Message.Body.RxHistoryResponse.MedicationDispensed.OtherMedicationDate.OtherMedicationDateQualifier [default value = SoldDate]	N/A	
		State PDMP Where the Record Originated	SCRIPT.Message.Body.RxHistoryResponse.MedicationDispensed.Extension.String		name = "Originating State"

# CURES Information Exchange Web Service Implementation Guide

Section		CURES	NCPDP	NIEM	Attribute
					url = "https://cures.doj.ca.gov/extensions/prescriptions/originatingstate"
	Search	Search Period - Range Start	SCRIPT.Message.Body.RxHistoryResponse.RequestedDates.StartDate.Date	N/A	
		Search Period - Range End	SCRIPT.Message.Body.RxHistoryResponse.RequestedDates.EndDate.Date	N/A	
	Interstate Data Response	State PDMP	SCRIPT.Message.Body.RxHistoryResponse.PDMPStatesResponded.PDMPStates.StateProvince	N/A	
		State PDMP Response	SCRIPT.Message.Body.RxHistoryResponse.PDMPStatesResponded.PDMPStates.ReasonCode	N/A	

### 5.1.4 /iews/patients (Interstate Data Response for Multiple Patients Matched) - Response Mapping of CURES Data to NCPDP Format

\*\*Interstate Data is received by CURES via the NIEM XML-based information exchange framework. The NIEM elements are mapped to CURES elements. The table below maps the CURES elements to NCPDP elements and NIEM elements.

Section	CURES		NCPDP	NIEM	Attribute		
XML Declaration	N/A		N/A	N/A	xml version="1.0" encoding="UTF-8" standalone="yes"		
Message	Message	Message	SCRIPT.Message	N/A	DatatypesVersion="2023011" TransportVersion="2023011" TransactionDomain="SCRIPT" TransactionVersion="2023011" StructuresVersion="2023011" ECLVersion="2023011"		
	Header	Message Envelope	Recipient of the Message	SCRIPT.Message.Header.To	N/A	Qualifier="ZZZ"	
			Sender of the Message	SCRIPT.Message.Header.From	N/A	Qualifier="ZZZ"	
			Unique MessageID	SCRIPT.Message.Header.MessageID	N/A		
			Relates to MessageID	SCRIPT.Message.Header.RelatesToMessageID [value = MessageID for RxHistoryRequest]	N/A		
			Sent Date/Time	SCRIPT.Message.Header.SentTime	N/A		
			Sender Software Developer	SCRIPT.Message.Header.SenderSoftware.SenderSoftwareDeveloper	N/A		
			Sender Software Product	SCRIPT.Message.Header.SenderSoftware.SenderSoftwareProduct	N/A		
			Sender Software Version Release	SCRIPT.Message.Header.SenderSoftware.SenderSoftwareVersionRelease	N/A		
	Body	Response	Response	SCRIPT.Message.Body.RxHistoryResponse.Response.Denied	N/A		
		Benefits Coordination	Consent	SCRIPT.Message.Body.RxHistoryRequest.BenefitsCoordination.Consent [default value = Y]	N/A		
		PAR Search Criteria	Patient Last Name	Patient Last Name	SCRIPT.Message.Body.RxHistoryResponse.Patient.HumanPatient.Names.Name.LastName	N/A	
			Patient First Name	Patient First Name	SCRIPT.Message.Body.RxHistoryResponse.Patient.Patient.HumanPatient.Names.Name.FirstName	N/A	
			Patient Gender	Patient Gender	SCRIPT.Message.Body.RxHistoryResponse.Patient.HumanPatient.GenderAndSex.AdministrativeGender	N/A	
Patient DOB			Patient DOB	SCRIPT.Message.Body.RxHistoryResponse.Patient.Patient.HumanPatient.DateOfBirth.Date	N/A		

# CURES Information Exchange Web Service Implementation Guide

Section	CURES	NCPDP	NIEM	Attribute
Patient Picklist <b>[1...300]</b>	Patient Address	SCRIPT.Message.Body.RxHistoryResponse.Patient.Patient.HumanPatient.Address.AddressLine1	N/A	
	Patient City	SCRIPT.Message.Body.RxHistoryResponse.Patient.Patient.HumanPatient.Address.City	N/A	
	Patient State/Province	SCRIPT.Message.Body.RxHistoryResponse.Patient.Patient.HumanPatient.Address.StateProvince	N/A	
	Postal Code	SCRIPT.Message.Body.RxHistoryResponse.Patient.Patient.HumanPatient.Address.PostalCode	N/A	
	Drug Name	SCRIPT.Message.Body.RxHistoryResponse.MedicationDispensed.DrugDescription [default value = Use Patient Account Number(s) from this response and execute the <b>/iews/prescriptions</b> web service to obtain a PAR. ]	N/A	
	Drug Quantity	SCRIPT.Message.Body.RxHistoryResponse.MedicationDispensed.Quantity.Value [default value = 0]	N/A	
	Code List Qualifier	SCRIPT.Message.Body.RxHistoryResponse.MedicationDispensed.Quantity.CodeListQualifier [default value = 87]	N/A	
	Unit Source Code	SCRIPT.Message.Body.RxHistoryResponse.MedicationDispensed.Quantity.QuantityUnitofMeasure.Code [value = C38046]	N/A	
	Date Filled	SCRIPT.Message.Body.RxHistoryResponse.MedicationDispensed.LastFillDate.Date [value = 1900-01-01]	N/A	
	Substitutions	SCRIPT.Message.Body.RxHistoryResponse.MedicationDispensed.Substitutions [default value = 0]	N/A	
	Number of RX for	SCRIPT.Message.Body.RxHistoryResponse.MedicationDispensed.Note	Number of RX for Patient: N/A to NIEM	
	Patient Account Number (use to obtain a PAR via the <b>/iews/prescriptions</b> web service)	SCRIPT.Message.Body.RxHistoryResponse.MedicationDispensed.Patient.Identification.PatientAccountNumber	N/A	
	Patient Last Name	SCRIPT.Message.Body.RxHistoryResponse.MedicationDispensed.Patient.Names.Name.LastName	pmp:Prescription.pmp:Patient.nc:PersonName.nc:PersonSurName	
	Patient First Name	SCRIPT.Message.Body.RxHistoryResponse.MedicationDispensed.Patient.Names.Name.FirstName	pmp:Prescription.pmp:Patient.nc:PersonName.nc:PersonGivenName	
	Patient Gender	SCRIPT.Message.Body.RxHistoryResponse.MedicationDispensed.Patient.GenderAndSex.AdministrativeGender	pmp:Prescription.pmp:Patient.nc:PersonSexCode	
Patient DOB	SCRIPT.Message.Body.RxHistoryResponse.MedicationDispensed.Patient.DateOfBirth.Date	pmp:Prescription.pmp:Patient.nc:PersonBirthDate.nc:Date		
Patient Address	SCRIPT.Message.Body.RxHistoryResponse.MedicationDispensed.Patient.Address.AddressLine1	pmp:Prescription.pmp:Patient.pmp:PersonPrimaryContactInformation.nc:ContactMailingAddress.nc:StructuredAddress.nc:LocationStreet.nc:StreetFullText		

# CURES Information Exchange Web Service Implementation Guide

Section	CURES		NCPDP	NIEM	Attribute
		Patient City	SCRIPT.Message.Body.RxHistoryResponse.MedicationDispensed.Patient.Address.City	pmp:Prescription.pmp:Patient.pmp:PersonPrimaryContactInformation.nc:ContactMailingAddress.nc:StructuredAddress.nc:LocationCityName	
		Patient State	SCRIPT.Message.Body.RxHistoryResponse.MedicationDispensed.Patient.Address.StateProvince	pmp:Prescription.pmp:Patient.pmp:PersonPrimaryContactInformation.nc:ContactMailingAddress.nc:StructuredAddress.nc:LocationStateUSPostalServiceCode	
		Patient Postal Code	SCRIPT.Message.Body.RxHistoryResponse.MedicationDispensed.Patient.Address.PostalCode	pmp:Prescription.pmp:Patient.pmp:PersonPrimaryContactInformation.nc:ContactMailingAddress.nc:StructuredAddress.nc:LocationPostalCode	
		Species (attribute is provided when patient is an Animal)	SCRIPT.Message.Body.RxHistoryResponse.MedicationDispensed.Patient.Extension.String [value = Animal]	pmp:Prescription.pmp:Patient.pmp.SpeciesCode	name="Species" url="https://cures.doj.ca.gov/extensions/patient/species"
		Pet Name (attribute is provided when patient is an Animal)	SCRIPT.Message.Body.RxHistoryResponse.MedicationDispensed.Patient.String	pmp:Prescription.pmp:Patient.pmp:PatientNameOfAnimalText	name="Pet Name" url="https://cures.doj.ca.gov/extensions/patient/animalname"
		Date Sold	SCRIPT.Message.Body.RxHistoryResponse.MedicationDispensed.OtherMedicationDates.OtherMedicationDate.Date [value = 1900-01-01]	N/A	
		Date Sold Qualifier	SCRIPT.Message.Body.RxHistoryResponse.MedicationDispensed.OtherMedicationDate.OtherMedicationDateQualifier [default value = SoldDate]	N/A	
	Search	Search Period - Range Start	SCRIPT.Message.Body.RxHistoryResponse.RequestedDates.StartDate.Date	N/A	
		Search Period - Range End	SCRIPT.Message.Body.RxHistoryResponse.RequestedDates.EndDate.Date	N/A	
	Interstate Data Response	State PDMP	SCRIPT.Message.Body.RxHistoryResponse.PDMPStatesResponded.StateProvince	N/A	
		State PDMP Response	SCRIPT.Message.Body.RxHistoryResponse.PDMPStatesResponded.ReasonCode	N/A	



## 5.2 /iews/prescriptions (CURES and Interstate Data Request for Picklist Patients) - Request Mapping of CURES and Interstate Data to NCPDP Format

Section		CURES	NCPDP	Attribute	Required/Optional	
Message	Message	Message	SCRIPT.Message	DatatypesVersion="2023011" TransportVersion="2023011" TransactionVersion="2023011" StructuresVersion="2023011" ECLVersion="2023011" TransactionDomain="SCRIPT"	Required	
	Header	Message Envelope	Recipient of the Message	SCRIPT.Message.Header.To	Qualifier="ZZZ"	Required
			Healthcare Entity (the name of the healthcare entity (business) from which this request was sent)	SCRIPT.Message.Header.From	Qualifier="ZZZ"	Required
			Unique MessageID	SCRIPT.Message.Header.MessageID		Required
			Sent Date/Time	SCRIPT.Message.Header.SentTime		Required
			User ID of the Requesting Entity	SCRIPT.Message.Header.Security.UsernameToken.Username		Required
			HIT System Hospital/Facility	SCRIPT.Message.Header.Security.Sender.SecondaryIdentification		Required
			Description of Facility (Emergency, ICU)	SCRIPT.Message.Header.Security.Sender.TertiaryIdentification		Optional
			Sender Software Developer	SCRIPT.Message.Header.SenderSoftware.SenderSoftwareDeveloper		Required
			Sender Software Product	SCRIPT.Message.Header.SenderSoftware.SenderSoftwareProduct		Required
	Sender Software Version Release	SCRIPT.Message.Header.SenderSoftware.SenderSoftwareVersionRelease		Required		
	Body	Benefits Coordination	Consent	SCRIPT.Message.Body.RxHistoryRequest.BenefitsCoordination.Consent [value = Y]		Required
		Patient (populate request with patient information from /iews/patients picklist response)	Patient Account Number	SCRIPT.Message.Body.RxHistoryRequest.Patient.HumanPatient.Identification.PatientAccountNumber.		Required
Patient Last Name			SCRIPT.Message.Body.RxHistoryRequest.Patient.HumanPatient.Names.Name.LastName		Required	
Patient First Name			SCRIPT.Message.Body.RxHistoryRequest.Patient.HumanPatient.Names.Name.FirstName		Required	
Patient Gender – A value must be specified: U = Unspecified F = Female M = Male			SCRIPT.Message.Body.RxHistoryRequest.PatientHumanPatient.GenderAndSex.AdministrativeGender [value = U, F, or M]		Required	
Patient DOB – YYYY-MM-DD			SCRIPT.Message.Body.RxHistoryRequest.Patient.HumanPatient.DateOfBirth.Date		Required	

# CURES Information Exchange Web Service Implementation Guide

Section	CURES	NCPDP	Attribute	Required/Optional	
	Patient Address	SCRIPT.Message.Body.RxHistoryRequest.Patient.HumanPatient.Address.AddressLine1		Optional	
	Patient City	SCRIPT.Message.Body.RxHistoryRequest.Patient.HumanPatient.Address.City		Optional	
	Patient State/Province – 2-character state/province abbreviation	SCRIPT.Message.Body.RxHistoryRequest.Patient.HumanPatient.Address.StateProvince		Optional	
	Patient Postal Code – 5-digit postal code	SCRIPT.Message.Body.RxHistoryRequest.Patient.HumanPatient.Address.PostalCode		Optional	
	<b>Prescriber or Non-DEA Practitioner</b>				
	Prescriber/Non-DEA Practitioner State License Number	SCRIPT.Message.Body.RxHistoryRequest.Prescriber.NonVeterinarian.Identification.StateLicenseNumber		Required if the Requestor or Authorizing User is a Prescriber or Non-DEA Practitioner	
	Prescriber DEA Number	SCRIPT.Message.Body.RxHistoryRequest.Prescriber.NonVeterinarian.Identification.DEANumber		Optional	
	Prescriber/Non-DEA Practitioner NPI	SCRIPT.Message.Body.RxHistoryRequest.Prescriber.NonVeterinarian.Identification.NPI		Required if the Requestor or Authorizing User is a Prescriber or Non-DEA Practitioner	
	Prescriber/Non-DEA Practitioner Last Name	SCRIPT.Message.Body.RxHistoryRequest.Prescriber.NonVeterinarian.Names.Name.LastName		Required if the Requestor or Authorizing User is a Prescriber or Non-DEA Practitioner	
	Prescriber/Non-DEA Practitioner First Name	SCRIPT.Message.Body.RxHistoryRequest.Prescriber.NonVeterinarian.Names.Name.FirstName		Required if the Requestor or Authorizing User is a Prescriber or Non-DEA Practitioner	
	<b>Pharmacist</b>				
	Pharmacist State License Number	SCRIPT.Message.Body.RxHistoryRequest.Pharmacy.Pharmacist.Identification.StateLicenseNumber		Required if the Requestor or Authorizing User is a Pharmacist	
	Pharmacist Last Name	SCRIPT.MessageBody.RxHistoryRequest.Pharmacy.Pharmacist.Names.Name.LastName		Required if the Requestor or Authorizing User is a Pharmacist	
	Pharmacist First Name	SCRIPT.Message.Body.RxHistoryRequest.Pharmacy.Pharmacist.Names.Name.FirstName		Required if the Requestor or Authorizing User is a Pharmacist	
	Business Name	SCRIPT.Message.Body.RxHistoryRequest.Pharmacy.BusinessName		Required if the Requestor or Authorizing User is a Pharmacist	
	Search	Search Period - Range Start	SCRIPT.Message.Body.RxHistoryRequest.RequestedDates.StartDate.Date		Required
		Search Period - Range End	SCRIPT.Message.Body.RxHistoryRequest.RequestedDates.EndDate.Date		Required
	Delegate Requestor	Delegate Last Name	SCRIPT.Message.Body.RxHistoryRequest.Requestor.RequestorName.Name.LastName		Required if the Requestor is a Delegate
Delegate First Name		SCRIPT.Message.Body.RxHistoryRequest.Requestor.RequestorName.Name.FirstName		Required if the Requestor is a Delegate	

### 5.2.1 /views/prescriptions (CURES Data Response for Patient from Picklist) – Response Mapping of CURES Data to NCPDP Format

Section		CURES	NCPDP	Attribute	
XML Declaration		N/A	N/A	xml version="1.0" encoding="UTF-8" standalone="yes"	
Message	Message Envelope	Message	SCRIPT.Message	DatatypesVersion="2023011" TransportVersion="2023011" TransactionDomain="SCRIPT" TransactionVersion="2023011" StructuresVersion="2023011" ECLVersion="2023011"	
		Recipient of the Message	SCRIPT.Message.Header.To	Qualifier="ZZZ"	
		Sender of the Message	SCRIPT.Message.Header.From	Qualifier="ZZZ"	
		Unique MessageID	SCRIPT.Message.Header.MessageID		
		Relates to MessageID	SCRIPT.Message.Header.RelatesToMessageID [value = MessageID for RxHistoryRequest]		
		Sent Date/Time	SCRIPT.Message.Header.SentTime		
		Sender Software Developer	SCRIPT.Message.Header.SenderSoftware.SenderSoftwareDeveloper		
		Sender Software Product	SCRIPT.Message.Header.SenderSoftware.SenderSoftwareProduct		
		Sender Software Version Release	SCRIPT.Message.Header.SenderSoftware.SenderSoftwareVersionRelease		
		Response	Response	SCRIPT.Message.Body.RxHistoryResponse.Response.Approved	
		Benefits Coordination	Consent	SCRIPT.Message.Body.RxHistoryRequest.BenefitsCoordination.Consent [value = Y]	
		Patient	Patient Account Number	SCRIPT.Message.Body.RxHistoryResponse.Patient.HumanPatient.Identification.PatientAccountNumber	
			Patient Last Name	SCRIPT.Message.Body.RxHistoryResponse.Patient.HumanPatient.Names.Name.LastName	
			Patient First Name	SCRIPT.Message.Body.RxHistoryResponse.Patient.HumanPatient.Names.Name.FirstName	
			Patient Gender	SCRIPT.Message.Body.RxHistoryResponse.Patient.HumanPatient.GenderAndSex.AdministrativeGender	
			Patient DOB	SCRIPT.Message.Body.RxHistoryResponse.Patient.HumanPatient.DateOfBirth.Date	
			Patient Address	SCRIPT.Message.Body.RxHistoryResponse.Patient.HumanPatient.Address.AddressLine1	
Patient City	SCRIPT.Message.Body.RxHistoryResponse.Patient.HumanPatient.Address.City				
Patient State/Province	SCRIPT.Message.Body.RxHistoryResponse.Patient.HumanPatientAddress.StateProvince				
Patient Postal Code	SCRIPT.Message.Body.RxHistoryResponse.Patient.HumanPatient.Address.PostalCode				

# CURES Information Exchange Web Service Implementation Guide

Section		CURES	NCPDP	Attribute
		Species (attribute is provided when patient is an Animal)	SCRIPT.Message.Body.RxHistoryResponse.MedicationDispensed.Patient.Extension.String	name = "Species" url = "https://cures.doj.ca.gov/extensions/patient/species"
		Pet Name (attribute is provided when patient is an Animal)	SCRIPT.Message.Body.RxHistoryResponse.MedicationDispensed.Patient.String	name = "Pet Name" url = "https://cures.doj.ca.gov/extensions/patient/animalname"
Prescription <b>[1..300]</b>		Drug Name, Strength, Form (values separated by   )  Note: if the reported NDC failed validation, the reported NDC is displayed with an asterisk	SCRIPT.Message.Body.RxHistoryResponse.MedicationDispensed.DrugDescription	
		NDC Number (product code)	SCRIPT.Message.Body.RxHistoryResponse.MedicationDispensed.Product.DrugCoded.NDC	
		Drug Quantity	SCRIPT.Message.Body.RxHistoryResponse.MedicationDispensed.Quantity.Value	
		Code List Qualifier	SCRIPT.Message.Body.RxHistoryResponse.MedicationDispensed.Quantity.CodeListQualifier [value = 87]	
		Unit Source Code	SCRIPT.Message.Body.RxHistoryResponse.MedicationDispensed.Quantity.QuantityUnitofMeasure.Code [value = C38046]	
		Days Supply	SCRIPT.Message.Body.RxHistoryResponse.MedicationDispensed.DaysSupply	
		Date Filled	SCRIPT.Message.Body.RxHistoryResponse.MedicationDispensed.LastFillDate.Date	
		Substitutions	SCRIPT.Message.Body.RxHistoryResponse.MedicationDispensed.Substitutions [value = 0]	
		Refills Authorized	SCRIPT.Message.Body.RxHistoryResponse.MedicationDispensed.Note	
		Serialized Prescription Form Number	SCRIPT.Message.Body.RxHistoryResponse.MedicationDispensed.HistoryPrescriberOrderNumber	
		Pharmacy NCPDPID	SCRIPT.Message.Body.RxHistoryResponse.MedicationDispensed.Pharmacy.Identification.NCPDPID [default value = -]	
		Pharmacy Number	SCRIPT.Message.Body.RxHistoryResponse.MedicationDispensed.Pharmacy.Identification.StateLicenseNumber	
		Pharmacy NPI	SCRIPT.Message.Body.RxHistoryResponse.MedicationDispensed.Pharmacy.Identification.NPI [default value = -]	
		Pharmacy Name	SCRIPT.Message.Body.RxHistoryResponse.MedicationDispensed.Pharmacy.BusinessName	
		Pharmacy Address	SCRIPT.Message.Body.RxHistoryResponse.MedicationDispensed.Pharmacy.Address.AddressLine1	
		Pharmacy City	SCRIPT.Message.Body.RxHistoryResponse.MedicationDispensed.Pharmacy.Address.Address.City	
		Pharmacy State	SCRIPT.Message.Body.RxHistoryResponse.MedicationDispensed.Pharmacy.Address.StateProvince	
		Pharmacy Postal Code	SCRIPT.Message.Body.RxHistoryResponse.MedicationDispensed.Pharmacy.Address.PostalCode	
		Prescriber DEA	SCRIPT.Message.Body.RxHistoryResponse.MedicationDispensed.Prescriber.NonVeterinarian.Identification.DEANumber	
Prescriber NPI	SCRIPT.Message.Body.RxHistoryResponse.MedicationDispensed.Prescriber.NonVeterinarian.Identification.NPI [default value = -]			

# CURES Information Exchange Web Service Implementation Guide

Section		CURES	NCPDP	Attribute
		Prescriber Name (prescriber name is captured in the First and Last Name fields)	SCRIPT.Message.Body.RxHistoryResponse.MedicationDispensed.Prescriber.NonVeterinarian.Names.Name.LastName	
		Prescriber's Name (prescriber name is captured in the First and Last Name fields)	SCRIPT.Message.Body.RxHistoryResponse.MedicationDispensed.Prescriber.NonVeterinarian.Names.Name.FirstName	
		Prescriber City	SCRIPT.Message.Body.RxHistoryResponse.MedicationDispensed.Prescriber.NonVeterinarian.Address.City	
		Prescription Number Qualifier	SCRIPT.Message.Body.RxHistoryResponse.MedicationDispensed.HistorySource.Source.SourceQualifier [default value = Pharmacy]	
		Pharmacy Prescription Number	SCRIPT.Message.Body.RxHistoryResponse.MedicationDispensed.HistorySource.SourceReference	
		Prescription Refill Number	SCRIPT.Message.Body.RxHistoryResponse.MedicationDispensed.HistorySource.FillNumber	
		Payment Type	SCRIPT.Message.Body.RxHistoryResponse.MedicationDispensed.HistorySource.PaymentType	
		Date Sold (if Date Sold was not reported, date value is 1900-01-01)	SCRIPT.Message.Body.RxHistoryResponse.MedicationDispensed.OtherMedicationDates.OtherMedicationDate.Date	
		Date Sold Qualifier	SCRIPT.Message.Body.RxHistoryResponse.MedicationDispensed.OtherMedicationDate.OtherMedicationDateQualifier [value = SoldDate]	
		Daily MME (attribute is provided when a calculated MME value exists)	SCRIPT.Message.Body.RxHistoryResponse.MedicationDispensed.Extension.Decimal	name = "Daily MME" url = "https://cures.doj.ca.gov/extensions/prescriptions/dailymm e"
		Total MME (attribute is provided when a calculated MME value exists)	SCRIPT.Message.Body.RxHistoryResponse.MedicationDispensed.Extension.Decimal	name = "Total MME" url= "https://cures.doj.ca.gov/extensions/prescriptions/totalmm e"
		State PDMP Where the Record Originated	SCRIPT.Message.Body.RxHistoryResponse.MedicationDispensed.Extension.String	name = "Originating State" url = "https://cures.doj.ca.gov/extensions/prescriptions/originatin gstate"
	Search	Search Time Range Start	SCRIPT.Message.Body.RxHistoryResponse.RequestedDates.StartDate.Date	
		Search Time - Range End	SCRIPT.Message.Body.RxHistoryResponse.RequestedDates.EndDate.Date	

### 5.2.2 /iews/prescriptions (Interstate Data Response for Patient from Picklist) – Response Mapping of CURES Data to NCPDP Format

\*\*Interstate Data is received by CURES via the NIEM XML-based information exchange framework. The NIEM elements are mapped to CURES elements. The table below maps the CURES elements to NCPDP elements and NIEM elements.

Section		CURES	NCPDP	NIEM	Attribute		
XML Declaration		N/A	N/A	N/A	xml version="1.0" encoding="UTF-8" standalone="yes"		
Message	Message	Message	SCRIPT.Message	N/A	DatatypesVersion="2023011" TransportVersion="2023011" TransactionDomain="SCRIPT" TransactionVersion="2023011" StructuresVersion="2023011" ECLVersion="2023011"		
	Header	Message Envelope	Recipient of the Message	SCRIPT.Message.Header.To	N/A	Qualifier="ZZZ"	
			Sender of the Message	SCRIPT.Message.Header.From	N/A	Qualifier="ZZZ"	
			Unique MessageID	SCRIPT.Message.Header.MessageID	N/A		
			Relates to MessageID	SCRIPT.Message.Header.RelatesToMessageID [value = MessageID for RxHistoryRequest]	N/A		
			Sent Date/Time	SCRIPT.Message.Header.SentTime	N/A		
			Sender Software Developer	SCRIPT.Message.Header.SenderSoftware.SenderSoftwareDeveloper	N/A		
			Sender Software Product	SCRIPT.Message.Header.SenderSoftware.SenderSoftwareProduct	N/A		
			Sender Software Version Release	SCRIPT.Message.Header.SenderSoftware.SenderSoftwareVersionRelease	N/A		
	Body	Response	Response	SCRIPT.Message.Body.RxHistoryResponse.Response.Approved	N/A		
		Benefits Coordination	Consent	SCRIPT.Message.Body.RxHistoryRequest.BenefitsCoordination.Consent [value = Y]	N/A		
		Patient	Patient Account Number	Patient Account Number	SCRIPT.Message.Body.RxHistoryResponse.Patient.HumanPatient.Identification.PatientAccountNumber	N/A	
			Patient Last Name	Patient Last Name	SCRIPT.Message.Body.RxHistoryResponse.Patient.HumanPatient.Names.Name.LastName	pmp:Prescription.pmp:Patient.nc:PersonName.nc:PersonSurName	
			Patient First Name	Patient First Name	SCRIPT.Message.Body.RxHistoryResponse.Patient.HumanPatient.Names.Name.FirstName	pmp:Prescription.pmp:Patient.nc:PersonName.nc:PersonGivenName	
			Patient Gender	Patient Gender	SCRIPT.Message.Body.RxHistoryResponse.PatientPatient.GenderAndSex.AdministrativeGender.HumanPatient.GenderAndSex.AdministrativeGenderAndSex.AdministrativeGender	pmp:Prescription.pmp:Patient.nc:PersonSexCode	

# CURES Information Exchange Web Service Implementation Guide

Section		CURES	NCPDP	NIEM	Attribute
		Patient DOB	SCRIPT.Message.Body.RxHistoryResponse.Patient.HumanPatient.DateOfBirth.Date	pmp:Prescription.pmp:Patient.nc:PersonBirthDate.nc:Date	
		Patient Address	SCRIPT.Message.Body.RxHistoryResponse.Patient.HumanPatient.Address.AddressLine1	pmp:Prescription.pmp:Patient.pmp:PersonPrimaryContactInformation.nc:ContactMailingAddress.nc:StructuredAddress.nc:LocationStreet.nc:StreetFullText	
		Patient City	SCRIPT.Message.Body.RxHistoryResponse.Patient.HumanPatient.Address.City	pmp:Prescription.pmp:Patient.pmp:PersonPrimaryContactInformation.nc:ContactMailingAddress.nc:StructuredAddress.nc:LocationCityName	
		Patient State/Province	SCRIPT.Message.Body.RxHistoryResponse.Patient.HumanPatientAddress.StateProvince	pmp:Prescription.pmp:Patient.pmp:PersonPrimaryContactInformation.nc:ContactMailingAddress.nc:StructuredAddress.nc:LocationStateUSPostalServiceCode	
		Patient Postal Code	SCRIPT.Message.Body.RxHistoryResponse.Patient.HumanPatient.Address.PostalCode	pmp:Prescription.pmp:Patient.pmp:PersonPrimaryContactInformation.nc:ContactMailingAddress.nc:StructuredAddress.nc:LocationPostalCode	
		Species (attribute is provided when patient is an Animal)	SCRIPT.Message.Body.RxHistoryResponse.MedicationDispensed.Patient.Extension.String	name="Species" url="https://cures.doj.ca.gov/extensions/patient/species"	name="Species" url="https://cures.doj.ca.gov/extensions/patient/species"
		Pet Name (attribute is provided when patient is an Animal)	SCRIPT.Message.Body.RxHistoryResponse.MedicationDispensed.Patient.String		name="Pet Name" url="https://cures.doj.ca.gov/extensions/patient/animalname"
	Prescription (1..300)	Drug Name, Strength, Form (values separated by   )	SCRIPT.Message.Body.RxHistoryResponse.MedicationDispensed.DrugDescription	Drug Name : pmp:Prescription.pmp:PrescriptionDrug.pmp:DrugProductNameText  Strength: pmp:Prescription.pmp:PrescriptionDrug.pmp:DrugStrengthText  Form: pmp:Prescription.pmp:PrescriptionDrug.pmp:DrugUnitOfmeasureText	
		NDC Number (product code)	SCRIPT.Message.Body.RxHistoryResponse.MedicationDispensed.Product.DrugCoded.NDC	pmp:Prescription.pmp:PrescriptionDrug.pmp:DrugNDCProductIdentifier.nc:IdentificationID	
		Product Code Qualifier	SCRIPT.Message.Body.RxHistoryResponse.MedicationDispensed.DrugCoded.ProductCode.Qualifier [default value = ND]	N/A	
		Drug Quantity	SCRIPT.Message.Body.RxHistoryResponse.MedicationDispensed.Quantity.Value	pmp:Prescription.pmp:PrescriptionDrug.pmp:DispensedQuantity	
		Code List Qualifier	SCRIPT.Message.Body.RxHistoryResponse.MedicationDispensed.Quantity.CodeListQualifier [default value = 87]	N/A	

# CURES Information Exchange Web Service Implementation Guide

Section		CURES	NCPDP	NIEM	Attribute
		Unit Source Code	SCRIPT.Message.Body.RxHistoryResponse.MedicationDispensed.Quantity.QuantityUnitofMeasure.Code [value = C38046]	N/A	
		Days Supply	SCRIPT.Message.Body.RxHistoryResponse.MedicationDispensed.DaysSupply	pmp:Prescription.pmp:PrescriptionDrug.pmp:DaysSupplyCount	
		Date Filled	SCRIPT.Message.Body.RxHistoryResponse.MedicationDispensed.LastFillDate.Date	pmp:Prescription.pmp:PrescriptionFilledDate.nc:Date	
		Substitutions	SCRIPT.Message.Body.RxHistoryResponse.MedicationDispensed.Substitutions [default value = 0]	N/A	
		Refills Authorized	SCRIPT.Message.Body.RxHistoryResponse.MedicationDispensed.Note	Refills Authorized: pmp:Prescription.pmp:RefillsAuthorizedCount	
		Serialized Prescription Form Number	SCRIPT.Message.Body.RxHistoryResponse.MedicationDispensed.HistoryPrescriberOrderNumber		
		Pharmacy NCPDPID	SCRIPT.Message.Body.RxHistoryResponse.MedicationDispensed.Pharmacy.Identification.NCPDPID [default value = -]	N/A	
		Pharmacy Number	SCRIPT.Message.Body.RxHistoryResponse.MedicationDispensed.Pharmacy.Identification.StateLicenseNumber	pmp:Prescription.Dispenser.pmp:StateLicenseIdentifier.nc:IdentificationID	
		Pharmacy NPI	SCRIPT.Message.Body.RxHistoryResponse.MedicationDispensed.Pharmacy.Identification.NPI [default value = -]	N/A	
		Pharmacy Name	SCRIPT.Message.Body.RxHistoryResponse.MedicationDispensed.Pharmacy.BusinessName	pmp:Prescription.pmp:Dispenser.nc:OrganizationName	
		Pharmacy Address	SCRIPT.Message.Body.RxHistoryResponse.MedicationDispensed.Pharmacy.Address.AddressLine1	pmp:Prescription.pmp:Dispenser.nc:OrganizationLocation.nc:LocationAddress.nc:StructuredAddress.nc:LocationStreet.nc:StreetFullText	
		Pharmacy City	SCRIPT.Message.Body.RxHistoryResponse.MedicationDispensed.Pharmacy.Address.Address.City	pmp:Prescription.pmp:Dispenser.nc:OrganizationLocation.nc:LocationAddress.nc:StructuredAddress.nc:LocationCityName	
		Pharmacy State	SCRIPT.Message.Body.RxHistoryResponse.MedicationDispensed.Pharmacy.Address.StateProvince	pmp:Prescription.pmp:Dispenser.nc:OrganizationLocation.nc:LocationAddress.nc:StructuredAddress.nc:LocationStateUSPostalServiceCode	
		Pharmacy Postal Code	SCRIPT.Message.Body.RxHistoryResponse.MedicationDispensed.Pharmacy.Address.PostalCode	pmp:Prescription.pmp:Dispenser.nc:OrganizationLocation.nc:LocationAddress.nc:StructuredAddress.nc:LocationPostalCode	
		Prescriber DEA	SCRIPT.Message.Body.RxHistoryResponse.MedicationDispensed.Prescriber.NonVeterinarian.Identification.DEANumber	pmp:Prescription.pmp:prescriber.pmp:DEANumberIdentifier.nc:IdentificationID	
		Prescriber NPI	SCRIPT.Message.Body.RxHistoryResponse.MedicationDispensed.Prescriber.NonVeterinarian.Identification.NPI [default value = -]	N/A	
		Prescriber Last Name, Prescriber First Name  (Last name and first name separated by ,)	SCRIPT.Message.Body.RxHistoryResponse.MedicationDispensed.Prescriber.NonVeterinarian.Names.LastName	Prescriber Last Name: pmp:Prescription.pmp:prescriber.nc:PersonName.nc:PersonSurName  Prescriber First Name: pmp:Prescription.pmp:prescriber.nc:PersonName.nc:PersonGivenName	



# CURES Information Exchange Web Service Implementation Guide

Section		CURES	NCPDP	NIEM	Attribute	
		(Prescriber name is captured in the First and Last Name fields)				
		Prescriber Last Name, Prescriber First Name  (Last name and first name separated by ,.)  (Prescriber name is captured in the First and Last Name fields)	SCRIPT.Message.Body.RxHistoryResponse.MedicationDispensed.Prescriber.NonVeterinarian.Names.FirstName	Prescriber Last Name: pmp:Prescription.pmp:prescriber.nc:PersonName.nc:PersonSurName  Prescriber First Name: pmp:Prescription.pmp:prescriber.nc:PersonName.nc:PersonGivenName		
		Prescriber City	SCRIPT.Message.Body.RxHistoryResponse.MedicationDispensed.Prescriber.NonVeterinarian.Address.City	pmp:Prescription.pmp:PersonPrimaryContactInformation.nc:StructuredAddress.nc:LocationCityName		
		Prescription Number Qualifier	SCRIPT.Message.Body.RxHistoryResponse.MedicationDispensed.HistorySource.Source.SourceQualifier [default value = Pharmacy]	N/A		
		Pharmacy Prescription Number	SCRIPT.Message.Body.RxHistoryResponse.MedicationDispensed.HistorySource.SourceReference	pmp:Prescription.pmp:PrescriptionNumberText		
		Prescription Refill Number	SCRIPT.Message.Body.RxHistoryResponse.MedicationDispensed.HistorySource.FillNumber	pmp:Prescription.pmp:DrugRefillNumbercount		
		Payment Type	SCRIPT.Message.Body.RxHistoryResponse.MedicationDispensed.HistorySource.PaymentType	pmp:Prescription.pmp:MethodOfPaymentCode		
		Date Sold (If Date Sold was not provided, date value is 1900-01-01)	SCRIPT.Message.Body.RxHistoryResponse.MedicationDispensed.OtherMedicationDates.OtherMedicationDate.Date	N/A		
		Date Sold Qualifier	SCRIPT.Message.Body.RxHistoryResponse.MedicationDispensed.OtherMedicationDate.OtherMedicationDateQualifier [default value = SoldDate]	N/A		
		State PDMP Where the Record Originated	SCRIPT.Message.Body.RxHistoryResponse.MedicationDispensed.Extension.String		name = "Originating State" url = "https://cures.doj.ca.gov/extensions/prescriptions/originatingstate"	
		Search	Search Time Range Start	SCRIPT.Message.Body.RxHistoryResponse.RequestedDates.StartDate.Date		
			Search Time - Range End	SCRIPT.Message.Body.RxHistoryResponse.RequestedDates.EndDate.Date		

### 5.3 /iews/users-status – Request Mapping of CURES Data to NCPDP Format

Section		CURES	NCPDP	Attribute	Required/Optional		
Message	Header	Message	SCRIPT.Message	DatatypesVersion="2023011" TransportVersion="2023011" TransactionDomain="SCRIPT" TransactionVersion="2023011" StructuresVersion="2023011" ECLVersion="2023011"	Required		
		Recipient of the Message	SCRIPT.Header.To	qualifier="ZZZ"	Required		
		Healthcare Entity (the name of the healthcare entity (business) from which this request was sent)	SCRIPT.Header.From	qualifier="ZZZ"	Required		
		Unique MessageID	SCRIPT.Header.MessageID		Required		
		Sent Date/Time	SCRIPT.Header.SentTime		Required		
		User ID of the Requesting Entity	SCRIPT.Header.Security.UsernameToken.Username		Required		
		HIT System Hospital/Facility	SCRIPT.Header.Security.Sender.SecondaryIdentification		Required		
		Description of Facility (Emergency, ICU)	SCRIPT.Header.Security.Sender.TertiaryIdentification		Optional		
		Sender Software Developer	SCRIPT.Message.Header.SenderSoftware.SenderSoftwareDeveloper		Required		
		Sender Software Product	SCRIPT.Message.Header.SenderSoftware.SenderSoftwareProduct		Required		
		Sender Software Version Release	SCRIPT.Message.Header.SenderSoftware.SenderSoftwareVersionRelease		Required		
		Body	Verify User Status Request  Prescriber, Non-DEA Practitioner, Pharmacist Requestor  Or  Delegate's Authorizing User	Verify Status Code	SCRIPT.Message.Body.Verify.VerifyStatus.Code [value = 010]		Required
				Verify Status Description – Values must be specified: 1. <b>Identification Type:</b> S 2. <b>State License Number:</b> State License number for the Prescriber/Non-DEA Practitioner/Pharmacist 3. <b>Last Name:</b> Prescriber/Non-DEA Practitioner/Pharmacist Last Name 4. <b>First Name:</b> Prescriber/Non-DEA Practitioner/Pharmacist Last Name  **Key values separated by ;  <b>Example:</b> S;12345;LastName;FirstName	SCRIPT.Message.Body.Verify.VerifyStatus.Description [value = Identification Type;State License Number;Last Name;First Name]		Required
Delegate First Name	SCRIPT.Message.Body.Verify.VerifyStatus.Extension.String			name = "Delegate First Name"  url = "https://cures.doj.ca.gov/extensions/userstatus/delegatefirstname"	Required		
	Delegate Last Name	SCRIPT.Message.Body.Verify.VerifyStatus.Extension.String	name="Delegate Last Name"  url="https://cures.doj.ca.gov/extensions/userstatus/delegatelastname"	Required			

### 5.3.1 /iews/users-status - Response Mapping of CURES Data to NCPDP Format

Section		CURES	NCPDP	Attribute	
XML Declaration		N/A	N/A	xml version="1.0" encoding="UTF-8" standalone="yes"	
Message	Message		SCRIPT.Message	DatatypesVersion="2023011" TransportVersion="2023011" TransactionDomain="SCRIPT" TransactionVersion="2023011" StructuresVersion="2023011" ECLVersion="2023011"	
	Header	Message Envelope	Recipient of the Message	SCRIPT.Message.Header.To	qualifier="ZZZ"
			Sender of the Message	SCRIPT.Message.Header.From	qualifier="ZZZ"
			Unique MessageID	SCRIPT.Message.Header.MessageID	
			Relates To MessageID	SCRIPT.Message.Header.RelatesToMessageID [value = MessageID for RxHistoryRequest]	
			Sent Date/Time	SCRIPT.Message.Header.SentTime	
			Sender Software Developer	SCRIPT.Message.Header.SenderSoftware.SenderSoftwareDeveloper	
			Sender Software Product	SCRIPT.Message.Header.SenderSoftware.SenderSoftwareProduct	
			Sender Software Version Release	SCRIPT.Message.Header.SenderSoftware.SenderSoftwareVersionRelease	
	Body	Status	Status Code	SCRIPT.Message.Body.Status.Code	
			Description Code	SCRIPT.Message.Body.Status.DescriptionCode	
			Description	SCRIPT.Message.Body.Status.Description	

### 5.4 /iews/entity-status - Request Mapping of CURES Data to NCPDP Format

Section		CURES	NCPDP	Attribute	Required/Optional	
Message	Message	Message	SCRIPT.Message	DatatypesVersion="2023011" TransportVersion="2023011" TransactionDomain="SCRIPT" TransactionVersion="2023011" StructuresVersion="2023011" ECLVersion="2023011"	Required	
	Header	Message Envelope	Recipient of the Message	SCRIPT.Header.To	qualifier="ZZZ"	Required
			Healthcare Entity (the name of the healthcare entity (business) from which this request was sent)	SCRIPT.Header.From	qualifier="ZZZ"	Required
			Unique MessageID	SCRIPT.Header.MessageID		Required
			Sent Date/Time	SCRIPT.Header.SentTime		Required
			User ID of the Requesting Entity	SCRIPT.Header.Security.UsernameToken.Username		Required
			HIT System Hospital/Facility	SCRIPT.Header.Security.Sender.SecondaryIdentification		Required
			Description of Facility (Emergency, ICU)	SCRIPT.Header.Security.Sender.TertiaryIdentification		Optional
			Sender Software Developer	SCRIPT.Message.Header.SenderSoftware.SenderSoftwareDeveloper		Required
			Sender Software Product	SCRIPT.Message.Header.SenderSoftware.SenderSoftwareProduct		Required
			Sender Software Version Release	SCRIPT.Message.Header.SenderSoftware.SenderSoftwareVersionRelease		Required
	Body	Verify Entity Status Request	Verify Status Code	SCRIPT.Message.Body.Verify.VerifyStatus.Code [value = 010]		Required
			Description	SCRIPT.Message.Body.Verify.VerifyStatus.Description [value = REQUEST ENTITY STATUS]		Required

5.4.1 /iews/entity-status - Response Mapping of CURES Data to NCPDP Format

Section		CURES	NCPDP	Attribute	
XML Declaration		N/A	N/A	xml version="1.0" encoding="UTF-8" standalone="yes"	
Message	Message	Message	SCRIPT.Message	DatatypesVersion="2023011" TransportVersion="2023011" TransactionDomain="SCRIPT" TransactionVersion="2023011" StructuresVersion="2023011" ECLVersion="2023011"	
	Header	Message Envelope	Recipient of the Message	SCRIPT.Message.Header.To	qualifier="ZZZ"
			Sender of the Message	SCRIPT.Message.Header.From	qualifier="ZZZ"
			Unique MessageID	SCRIPT.Message.Header.MessageID	
			Relates To MessageID Value = the messageID for the RxHistoryResponse	SCRIPT.Message.Header.RelatesToMessageID [value = MessageID for RxHistoryRequest]	
			Sent Date/Time	SCRIPT.Message.Header.SentTime	
			Sender Software Developer	SCRIPT.Message.Header.SenderSoftware.SenderSoftwareDeveloper	
			Sender Software Product	SCRIPT.Message.Header.SenderSoftware.SenderSoftwareProduct	
			Sender Software Version Release	SCRIPT.Message.Header.SenderSoftware.SenderSoftwareVersionRelease	
	Body	Status	Status Code	SCRIPT.Message.Body.Status.Code	
			Description Code	SCRIPT.Message.Body.Status.DescriptionCode	
			Description	SCRIPT.Message.Body.Status.Description	

## 6 HTTP HEADER

### 6.1 HTTP Header

The HTTP header will contain the following information for each transaction:

HTTP HEADER	
Content-Type	application/xml
X-payload-format	NCPDP
X-search-mode	E (exact) or P (partial)
X-picklist	Y (yes) or N (no)
X-payload-version	2023011

#### 6.1.1 Sample Header

Content-Type	application/xml
X-payload-format	NCPDP
X-search-mode	P
X-picklist	Y
X-payload-version	2023011

#### 6.1.2 Default Values

- The X-payload-format header will default to **NCPDP**, as this is the only supported format at this time.
- CURES data requests: the X-search-mode header will default to **P** (partial) if X-search-mode is not specified.
- The X-picklist header will default to **N** (No) if not specified.

## 7 ERROR AND STATUS CODES

The NCPDP Error and Status messages consist of a Code, Description Code, and Description. CURES IEWS uses NCPDP defined codes to populate the Code element. The following table describes the NCPDP 2023011 status codes utilized by the application for the Code field in both error and status structure. If there is a functional failure, the system returns a NCPDP Error message. Requests that fail the NCPDP schema requirements and non-functional errors will result in an HTTP error message.

### 7.1 Transaction Codes

NAME OF VALUE	CODE	STATUS CODE	TRANSACTION ERROR CODE
Transaction successful	000	X	
Configuration error	700		X
Transaction rejected	900		X

## 7.2 Status/Error Codes

The Description Code and Description fields are used to provide system-specific details regarding the error or status. The application has defined the following Status/Error Codes, Description Codes, and Descriptions:

Status/Error Code	Description Code	Description	Web Service URL(s)	Conditions
000	008	Requesting Entity account in good standing	<ul style="list-style-type: none"> <li>• /iews/entity-status</li> </ul>	MOU entity verifies their account status, and the status of the MOU entity is <b>Active</b> .
000	103	MOU Entity account inactive. Access denied.	<ul style="list-style-type: none"> <li>• /iews/entity-status</li> </ul>	MOU entity verifies their account status, and the status of the MOU entity is <b>Inactive</b> .
000	134	Active status, user has access.	<ul style="list-style-type: none"> <li>• /iews/users-status</li> </ul>	The status of the CURES user account is <b>active</b> .
000	144	User credentials do not match what was provided in initial inquiry.	<ul style="list-style-type: none"> <li>• /iews/prescriptions</li> </ul>	Users may only search using a <b>Patient Account Number</b> that they generated with their own initial /iews/patients inquiry.
000	210	Not authorized to search Other PDMP. Verify permissions in CURES.	<ul style="list-style-type: none"> <li>• /iews/patients</li> <li>• /iews/prescriptions</li> </ul>	Selected PDMP(s) do not allow the license type and/or role of the User. *Requesting user should verify their permissions by searching via <a href="https://cures.doj.ca.gov">https://cures.doj.ca.gov</a> .
000	220	User CURES application is pending approval.	<ul style="list-style-type: none"> <li>• /iews/users-status</li> <li>• /iews/patients</li> <li>• /iews/prescriptions</li> </ul>	The status of the CURES user account is <b>pending approval</b> .  *CURES application takes between 24-48 hours to process.



CURES Information Exchange Web Service Implementation Guide

Status/Error Code	Description Code	Description	Web Service URL(s)	Conditions
000	500	User CURES account is suspended.	<ul style="list-style-type: none"> <li>• /iews/users-status</li> <li>• /iews/patients</li> <li>• /iews/prescriptions</li> </ul>	<p>The status of the CURES user account is <b>suspended</b>.</p> <p><b>*Requesting user should contact the CURES Help Desk.</b></p>
000	1000	No result found.	<ul style="list-style-type: none"> <li>• /iews/patients</li> </ul>	No patients with prescriptions found for the time searched.
000	2000	Invalid credential.	<ul style="list-style-type: none"> <li>• All</li> </ul>	Invalid MOU credentials.
000	3000	24 hours have lapsed since initial inquiry. Re-initiate PAR request.	<ul style="list-style-type: none"> <li>• /iews/prescriptions</li> </ul>	The <b>Patient Account Number</b> has expired because 24 hours have lapsed since the initial <b>/iews/patients</b> inquiry.
000	4000	User must complete Annual Update on CURES website to receive data.	<ul style="list-style-type: none"> <li>• /iews/users-status</li> <li>• /iews/patients</li> <li>• /iews/prescriptions</li> </ul>	The CURES user must complete their annual renewal via the CURES website.
000	4010	Multiple patient matches. Please search via <a href="https://cures.doj.ca.gov">https://cures.doj.ca.gov</a> .	<ul style="list-style-type: none"> <li>• /iews/patients</li> </ul>	The <b>/iews/patients</b> inquiry resulted in multiple patient matches and the MOU entity is unable to support a picklist.
000	4020	User credentials do not match any CURES account.	<ul style="list-style-type: none"> <li>• /iews/users-status</li> <li>• /iews/patients</li> <li>• /iews/prescriptions</li> </ul>	<p>No CURES account matching the <b>Last Name, First Name, and State License Number</b>.</p> <p><b>*Requesting user should verify that they are registered and that their credentials are accurate.</b></p>

## CURES Information Exchange Web Service Implementation Guide

Status/Error Code	Description Code	Description	Web Service URL(s)	Conditions
000	4030	User must complete Migrated User tasks on CURES website to get data.	<ul style="list-style-type: none"> <li>• /iews/users-status</li> <li>• /iews/patients</li> <li>• /iews/prescriptions</li> </ul>	Migrated CURES user must complete their Optimized CURES before they can access data via IEWS.
000	4040	Records exceed 300. Search <a href="https://cures.doj.ca.gov">https://cures.doj.ca.gov</a> for full results.	<ul style="list-style-type: none"> <li>• /iews/patients</li> <li>• /iews/prescriptions</li> </ul>	The prescription history for the patient exceeds 300 prescriptions.
010	134	There is no active authorizing user-delegate relationship.	<ul style="list-style-type: none"> <li>• /iews/users-status</li> <li>• /iews/patients</li> <li>• /iews/prescriptions</li> </ul>	The Delegate and/or the Authorizing User do not have an Active status, and/or there is no Active relationship.
900	134	System error	<ul style="list-style-type: none"> <li>• All</li> </ul>	Generic system error.
900	144	Only one State/Province may be identified per request.	<ul style="list-style-type: none"> <li>• /iews/patients</li> </ul>	Inquiries can only contain one State/Province. To search multiple States/Provinces, separate inquiries are required for each State/Province.
900	220	Invalid or missing required verify user status field(s)	<ul style="list-style-type: none"> <li>• /iews/users-status</li> </ul>	Invalid or missing required verify user status field(s).
900	500	Invalid request or Missing data.	<ul style="list-style-type: none"> <li>• All</li> </ul>	Invalid request or missing data.

## 8 /IEWS/PATIENTS

### 8.1 /iews/patients Overview

Requests submitted to the **/iews/patients** web service are submitted via a RxHistoryRequest message. There are NCPDP elements within the RxHistoryRequest message that are not applicable to **/iews/patients** requests but require a value (refer to [/iews/patients - Request Mapping of CURES Data to NCPDP Format](#) for details).

The RxHistoryRequest message is used for two types of data requests:

1. **CURES data requests** – CURES data requests are executed based on the search mode specified in the header and the information submitted in the **Patient** and **Requested Dates** sections.
2. **Interstate data requests** – Not all CURES users will be authorized to access another state's PDMP records, as these permissions are granted by the other state. The requesting user should verify their permissions by searching via <https://cures.doj.ca.gov>. **Individual RxHistoryRequest messages are required for each state a requestor wishes to query. It is imperative that requestor declares which state to query; the HIT system must not default to querying any other state/province.**

Interstate data requests will execute a search based on the information submitted in the Patient, Requested Dates, PDMP States Request sections. The requested state PDMP will execute the search per their defined search mode (exact or fuzzy/partial) irrespective of the search mode specified in the header.

**\* CURES data requests and Interstate data requests must be sent via separate RxHistoryRequest messages. A CURES RxHistoryRequest message must precede an Interstate RxHistoryRequest message.**

The RxHistoryRequest contains five major sections:

1. **Patient** – The system uses fields within the **Patient** section to query prescription data.

The following fields are required in the Patient section:

1. Patient First Name
2. Patient Last Name
3. Patient Gender (note: Patient Gender is required by NCPDP SCRIPT 2023011; the value 'U' (unspecified) will execute the query without filtering gender)
  - a. **\*\*If gender is specified ('M' or 'F') for Interstate data requests, it will be ignored.**
4. Patient Date of Birth

The following fields are optional fields for CURES data requests in the Patient section.  
**\*\*If provided for Interstate data requests, they will be ignored:**

1. Patient Street Address
2. Patient City
3. Patient State/Province
4. Patient Postal Code (5 digits)
  - a. Nine-digit zip will yield no result

**2. Prescriber or Pharmacy/Pharmacist** – The system uses certain fields to identify the CURES account of the Prescriber, Non-DEA Practitioner, or Pharmacist. Non-DEA Practitioner requests must be submitted using the Prescriber section. If a CURES account cannot be found or the account is not permitted to access CURES data, a Status message is returned.

Requests from Delegate must also include the following information about the Authorizing User.

***Prescriber/Non-DEA Practitioner:***

The following fields are required in the **Prescriber** section for a Prescriber and Non-DEA Practitioner query:

1. Prescriber/Non-DEA Practitioner State License Number, as registered in CURES
2. Prescriber/Non-DEA Practitioner NPI
3. Prescriber/Non-DEA Practitioner First Name, as registered in CURES
4. Prescriber/Non-DEA Practitioner Last Name, as registered in CURES

The Prescriber DEA Number is an optional field in the Prescriber section.

***Pharmacist:***

The following fields are required in the **Pharmacy** section for a Pharmacist query:

1. Pharmacist State License Number
2. Pharmacist First Name, as registered in CURES
3. Pharmacist Last Name, as registered in CURES
4. Pharmacy Business Name

**3. Requestor** (required for Delegate requests) – The **Requestor** section is optional. This section is used for Delegate requests conducted on behalf of an Authorizing User. If an active Delegate-Authorizing User relationship cannot be found, or if the Delegate and/or Authorizing User do not have an active status in CURES, a Status message is returned.

The following fields are required in the **Requestor** section for a Delegate query:

1. Delegate Last Name
2. Delegate First Name

**4. Requested Dates** – The **RequestedDates** section is used to specify the PAR search period. The maximum search period is the prior 24 months.

To accommodate requests generated outside of the Pacific Time Zone:

1. If the EndDate in the RequestedDates section is 1 day ahead of the Pacific Time Zone date, the system will adjust the EndDate to the current Pacific Time Zone calendar date.
2. If the StartDate in the RequestedDate section is 2 years and 1 day prior to the current Pacific Time Zone date, the system will adjust the StartDate to 2 years prior to the current Pacific Time Zone date.

If the StartDate or EndDate do not meet the aforementioned conditions, a status message is returned.

**5. PDMP States Requested** (required for an Interstate data request) – The **PDMPStatesRequested** section is optional. This section is used to specify the state to query for an Interstate data request.

1. Multiple states cannot be queried in the same request. A RxHistoryRequest message must be submitted for each state.
2. When this section is included in the request, only the state identified in the request will be queried; California will not be queried.

## **8.2 CURES Data Response**

### **8.2.1 Single Patient Matched**

Upon successful processing of an RxHistoryRequest message, the system returns an RxHistoryResponse message with the associated medication(s) dispensed if there is only one patient that matches the search criteria.

Important notes regarding the RxHistoryResponse. (Refer to [/iews/patients \(CURES Data Response for Single Patient Matched\) - Response Mapping of CURES Data to NCPDP Format](#) for details.):

1. The CURES database contains Schedule II, Schedule III, Schedule IV, and Schedule V prescription dispensation information for patients, as reported by California-licensed dispensers. The California Department of Justice does not independently verify the accuracy of the information reported by dispensers. The result is based on information available at the time the query was submitted and is subject to change as a result of subsequent reporting by dispensers.
2. If there is one patient match, the RxHistoryResponse message provides pertinent information about the patient and medication(s) dispensed.

3. There are elements within the RxHistoryResponse message that are not applicable to CURES but require a value per NCPDP.
4. The **Species** and **Animal Name** extensions are only present for animal prescriptions.
5. If **Date Sold** was not reported to CURES, the date sold value is **1900-01-01**.
6. Payment Type is a coded value (refer to [Payment Type Codes](#)).
7. Key values within the **DrugDescription** element are separated via a pipe (|).
8. **Daily MME** and **Total MME** are only present when applicable.
9. The **Originating State** (extension) is the state where the record came from.
10. Key values are truncated if they exceed the defined NCPDP length for an element.

### 8.2.2 Multiple Patients Matched

When there is more than one patient matched for a CURES data request, a picklist is returned via a RxHistoryResponse message to HIT systems that support a picklist. Otherwise, the system returns a status response. (Refer to [/iews/patients \(CURES Data Response for Multiple Patients Matched\) - Response Mapping of CURES Data to NCPDP Format](#) for details.)

The Patient Account Number(s) from the **/iews/patients** (RxHistoryResponse message) is used to obtain PAR via the **/iews/prescriptions** web service. (Refer to [/iews/prescriptions](#) for details.)

### 8.2.3 Status Message Response

Upon successful processing of an RxHistoryRequest message, a Status message is returned for the following conditions:

1. Invalid request dates provided.
2. The matched patient has more than 300 prescriptions.
3. There are no patient matches for the search.
4. The search yields multiple patient matches and the HIT system does not support a picklist.

(Refer to [Status/Error Codes](#) for details.)

## 8.3 Interstate Data Response

Upon successful processing of an RxHistoryRequest message, the system returns an RxHistoryResponse message. The RxHistoryResponse for Interstate data requests include a response status for each requested state (refer to [Interstate Response Codes](#) for details).

### 8.3.1 Single Patient Matched

The system returns an RxHistoryResponse message with the associated medication(s) dispensed if there is only one patient that matched the search criteria. The XML structure for the CURES and Interstate data the RxHistoryResponse message is consistent with one another. (Refer to [/iews/patients \(Interstate Data Response for Single Patient Matched\) - Response Mapping of CURES Data to NCPDP Format](#) for details.)

Important notes regarding the Interstate RxHistoryResponse:

1. Controlled substance prescription dispensation information from a state other than California may appear in a different format than the CURES dispensation data format.
2. Interstate data is received by CURES via the NIEM XML-based information exchange framework. The NIEM elements are mapped to the RxHistoryResponse NCPDP elements.
3. The Interstate RxHistoryResponse follows the schema guidelines defined by NCPDP.
  - a. Apart from the defined default values in [/iews/patients \(Interstate Data Response for Single Patient Matched\) - Response Mapping of CURES Data to NCPDP Format](#), **Not Provided** is the default value if the state PDMP does not provide a value for a required NCPDP element.
  - b. If the state PDMP provides a null value for an optional NCPDP element, the corresponding tag is omitted from the RxHistoryResponse.
4. The **Species** and **Animal Name** extensions are only present for animal prescriptions.
5. If **Date Sold** is not provided by the requested state, the **Date Sold** is a default value: **1900-01-01**.
6. **Date Sold** is only supported by NIEM 4.0. Responses from other states via other NIEM versions may not include **Date Sold**.
7. **Daily MME** and **Total MME** are not applicable to Interstate responses.
8. Key values are truncated if they exceed the defined NCPDP length for an element.

(Refer to [/iews/patients \(Interstate Data Response for Single Patient Matched\) - Response Mapping of CURES Data to NCPDP Format](#) for details.)

### 8.3.2 Multiple Patients Matched

When there is more than one patient matched for an Interstate data request, a picklist is returned via a RxHistoryResponse message to HIT systems that support a picklist. Otherwise, the system returns a status response. (Refer to [/iews/patients \(Interstate Data Response for Multiple Patients Matched\) - Response Mapping of CURES Data to NCPDP Format](#) for details.)

The Patient Account Number(s) from the **/iews/patients** (RxHistoryResponse message) is used to obtain PAR via the **/iews/prescriptions** web service. (Refer to [/iews/prescriptions](#) for details.)

The **Species** and **Animal Name** extensions are only present for animal prescriptions.

## 8.4 Failed Request

If there is a functional failure, the system returns a NCPDP Error message (refer to [Status/Error Codes](#) for details).

## 8.5 Erred Request

If the error is related to authentication or parsing the message, CURES IEWS returns an HTTP error.

## 8.6 /iews/patients : CURES Data Request Samples

*[NOTE: While there are additional elements available, those elements are not mandatory for a /iews/patients request but can be submitted as part of the request.]*

### 8.6.1 CURES Data: Prescriber/Non-DEA Practitioner Request

```
<?xml version="1.0" encoding="UTF-8"?>
<Message DatatypesVersion="2023011" TransportVersion="2023011" TransactionVersion="2023011"
StructuresVersion="2023011" ECLVersion="2023011" TransactionDomain="SCRIPT"
xmlns:xsi="http://www.w3.org/2001/XMLSchema-instance">
  <Header>
    <To Qualifier="ZZZ">CURES</To>
    <From Qualifier="ZZZ">Company Location #123</From>
    <MessageID>PATIENTS-V2023011-001</MessageID>
    <SentTime>2024-06-04T16:00:47Z</SentTime>
    <Security>
      <UsernameToken>
        <Username>Company</Username>
      </UsernameToken>
      <Sender>
        <SecondaryIdentification>Company Location #123</SecondaryIdentification>
      </Sender>
      <Receiver/>
    </Security>
    <SenderSoftware>
      <SenderSoftwareDeveloper>HIT Software Developer</SenderSoftwareDeveloper>
      <SenderSoftwareProduct>CURES IEWS Client</SenderSoftwareProduct>
      <SenderSoftwareVersionRelease>1.0</SenderSoftwareVersionRelease>
    </SenderSoftware>
  </Header>
  <Body>
    <RxHistoryRequest>
      <BenefitsCoordination>
        <Consent>Y</Consent>
      </BenefitsCoordination>
      <Patient>
        <HumanPatient>
          <Names>
            <Name>
```



```

        <LastName>VDHXMWV</LastName>
        <FirstName>XRUSXJN</FirstName>
    </Name>
</Names>
<GenderAndSex>
    <AdministrativeGender>U</AdministrativeGender>
</GenderAndSex>
<DateOfBirth>
    <Date>2034-11-24</Date>
</DateOfBirth>
</HumanPatient>
</Patient>
<Prescriber>
    <NonVeterinarian>
        <Identification>
            <StateLicenseNumber>055070</StateLicenseNumber>
            <NPI>1234567890</NPI>
        </Identification>
        <Names>
            <Name>
                <LastName>GPLXBKJ</LastName>
                <FirstName>TRAIZ</FirstName>
            </Name>
        </Names>
    </NonVeterinarian>
</Prescriber>
<RequestedDates>
    <StartDate>
        <Date>2024-01-06</Date>
    </StartDate>
    <EndDate>
        <Date>2024-09-06</Date>
    </EndDate>
</RequestedDates>
</RxHistoryRequest>
</Body>
</Message>

```

## 8.6.2 CURES Data: Pharmacist Request

```

<?xml version="1.0" encoding="UTF-8"?>
<Message DatatypesVersion="2023011" TransportVersion="2023011" TransactionVersion="2023011"
StructuresVersion="2023011" ECLVersion="2023011" TransactionDomain="SCRIPT"
xmlns:xsi="http://www.w3.org/2001/XMLSchema-instance">
    <Header>
        <To Qualifier="ZZZ">CURES</To>
        <From Qualifier="ZZZ">Company Location #123</From>
        <MessageID>PATIENTS-V2023011-001</MessageID>
    </Header>

```

## CURES Information Exchange Web Service Implementation Guide

```
<SentTime>2024-06-04T16:00:47Z</SentTime>
<Security>
  <UsernameToken>
    <Username>Company</Username>
  </UsernameToken>
  <Sender>
    <SecondaryIdentification>Company Location #123</SecondaryIdentification>
  </Sender>
  <Receiver/>
</Security>
<SenderSoftware>
  <SenderSoftwareDeveloper>HIT Software Developer</SenderSoftwareDeveloper>
  <SenderSoftwareProduct>CURES IEWS Client</SenderSoftwareProduct>
  <SenderSoftwareVersionRelease>1.0</SenderSoftwareVersionRelease>
</SenderSoftware>
</Header>
<Body>
  <RxHistoryRequest>
    <BenefitsCoordination>
      <Consent>Y</Consent>
    </BenefitsCoordination>
    <Patient>
      <HumanPatient>
        <Names>
          <Name>
            <LastName>VDHXMWV</LastName>
            <FirstName>XRUSXJN</FirstName>
          </Name>
        </Names>
        <GenderAndSex>
          <AdministrativeGender>U</AdministrativeGender>
        </GenderAndSex>
        <DateOfBirth>
          <Date>2034-11-24</Date>
        </DateOfBirth>
      </HumanPatient>
    </Patient>
    <Pharmacy>
      <Pharmacist>
        <Identification>
          <StateLicenseNumber>9988</StateLicenseNumber>
        </Identification>
        <Names>
          <Name>
            <LastName>DOE</LastName>
            <FirstName>AMY</FirstName>
          </Name>
        </Names>
      </Pharmacist>
    </Pharmacy>
  </RxHistoryRequest>
</Body>
```

```

        <BusinessName>PHARMACY BUSINESS NAME</BusinessName>
    </Pharmacy>
    <RequestedDates>
        <StartDate>
            <Date>2024-01-06</Date>
        </StartDate>
        <EndDate>
            <Date>2024-09-06</Date>
        </EndDate>
    </RequestedDates>
</RxHistoryRequest>
</Body>
</Message>

```

## 8.6.3 CURES Data: Delegate Request on behalf of a Prescriber/Non-DEA Practitioner Authorizing User

```

<?xml version="1.0" encoding="UTF-8"?>
<Message DatatypesVersion="2023011" TransportVersion="2023011" TransactionVersion="2023011"
StructuresVersion="2023011" ECLVersion="2023011" TransactionDomain="SCRIPT"
xmlns:xsi="http://www.w3.org/2001/XMLSchema-instance">
    <Header>
        <To Qualifier="ZZZ">CURES</To>
        <From Qualifier="ZZZ">Company Location #123</From>
        <MessageID>PATIENTS-V2023011-001</MessageID>
        <SentTime>2024-06-04T16:00:47Z</SentTime>
        <Security>
            <UsernameToken>
                <Username>Company</Username>
            </UsernameToken>
            <Sender>
                <SecondaryIdentification>Company Location #123</SecondaryIdentification>
            </Sender>
            <Receiver/>
        </Security>
        <SenderSoftware>
            <SenderSoftwareDeveloper>HIT Software Developer</SenderSoftwareDeveloper>
            <SenderSoftwareProduct>CURES IEWS Client</SenderSoftwareProduct>
            <SenderSoftwareVersionRelease>1.0</SenderSoftwareVersionRelease>
        </SenderSoftware>
    </Header>
    <Body>
        <RxHistoryRequest>
            <BenefitsCoordination>
                <Consent>Y</Consent>
            </BenefitsCoordination>
            <Patient>
                <HumanPatient>
                    <Names>

```

## CURES Information Exchange Web Service Implementation Guide

```
        <Name>
          <LastName>VDHXMWV</LastName>
          <FirstName>XRUSXJN</FirstName>
        </Name>
      </Names>
      <GenderAndSex>
        <AdministrativeGender>U</AdministrativeGender>
      </GenderAndSex>
      <DateOfBirth>
        <Date>2034-11-24</Date>
      </DateOfBirth>
    </HumanPatient>
  </Patient>
  <Prescriber>
    <NonVeterinarian>
      <Identification>
        <StateLicenseNumber>1019</StateLicenseNumber>
        <NPI>1234567890</NPI>
      </Identification>
      <Names>
        <Name>
          <LastName>DOE</LastName>
          <FirstName>HENRY</FirstName>
        </Name>
      </Names>
    </NonVeterinarian>
  </Prescriber>
  <RequestedDates>
    <StartDate>
      <Date>2024-01-06</Date>
    </StartDate>
    <EndDate>
      <Date>2024-09-06</Date>
    </EndDate>
  </RequestedDates>
  <Requestor>
    <RequestorName>
      <Name>
        <LastName>DOE</LastName>
        <FirstName>LILLY</FirstName>
      </Name>
    </RequestorName>
  </Requestor>
</RxHistoryRequest>
</Body>
</Message>
```

## 8.6.4 CURES Data: Delegate Request on behalf of a Pharmacist Authorizing User

```

<?xml version="1.0" encoding="UTF-8"?>
<Message DatatypesVersion="2023011" TransportVersion="2023011" TransactionVersion="2023011"
StructuresVersion="2023011" ECLVersion="2023011" TransactionDomain="SCRIPT"
xmlns:xsi="http://www.w3.org/2001/XMLSchema-instance">
  <Header>
    <To Qualifier="ZZZ">CURES</To>
    <From Qualifier="ZZZ">Company Location #123</From>
    <MessageID>PATIENTS-V2023011-001</MessageID>
    <SentTime>2024-06-04T16:00:47Z</SentTime>
    <Security>
      <UsernameToken>
        <Username>Company</Username>
      </UsernameToken>
      <Sender>
        <SecondaryIdentification>Company Location #123</SecondaryIdentification>
      </Sender>
      <Receiver/>
    </Security>
    <SenderSoftware>
      <SenderSoftwareDeveloper>HIT Software Developer</SenderSoftwareDeveloper>
      <SenderSoftwareProduct>CURES IEWS Client</SenderSoftwareProduct>
      <SenderSoftwareVersionRelease>1.0</SenderSoftwareVersionRelease>
    </SenderSoftware>
  </Header>
  <Body>
    <RxHistoryRequest>
      <BenefitsCoordination>
        <Consent>Y</Consent>
      </BenefitsCoordination>
      <Patient>
        <HumanPatient>
          <Names>
            <Name>
              <LastName>VDHXMWV</LastName>
              <FirstName>XRUSXJN</FirstName>
            </Name>
          </Names>
          <GenderAndSex>
            <AdministrativeGender>U</AdministrativeGender>
          </GenderAndSex>
          <DateOfBirth>
            <Date>2034-11-24</Date>
          </DateOfBirth>
        </HumanPatient>
      </Patient>
      <Pharmacy>
        <Pharmacist>

```

```

        <Identification>
            <StateLicenseNumber>101986</StateLicenseNumber>
        </Identification>
        <Names>
            <Name>
                <LastName>DOE</LastName>
                <FirstName>ADAM</FirstName>
            </Name>
        </Names>
    </Pharmacist>
    <BusinessName>PHARMACY BUSINESS NAME</BusinessName>
</Pharmacy>
<RequestedDates>
    <StartDate>
        <Date>2024-01-06</Date>
    </StartDate>
    <EndDate>
        <Date>2024-09-06</Date>
    </EndDate>
</RequestedDates>
<Requestor>
    <RequestorName>
        <Name>
            <LastName>DOE</LastName>
            <FirstName>VICTORIA</FirstName>
        </Name>
    </RequestorName>
</Requestor>
</RxHistoryRequest>
</Body>
</Message>

```

## 8.7 /iews/patients: CURES Data Response Samples

### 8.7.1 CURES Data: One Human Patient Entity Result – Prescription Data Response

```

<?xml version="1.0" encoding="UTF-8" standalone="yes"?>
<Message DatatypesVersion="20230115" TransportVersion="20230115" TransactionDomain="SCRIPT"
TransactionVersion="20230115" StructuresVersion="20230115" ECLVersion="20230115">
    <Header>
        <To Qualifier="ZZZ">Company Location #123</To>
        <From Qualifier="ZZZ">CURES</From>
        <MessageID>bac2bc63-e2dd-4eb6-a22b-72de4ac8129</MessageID>
        <RelatesToMessageID>PRESCRIPTIONS-V2023011-001</RelatesToMessageID>
        <SentTime>2024-09-16T12:53:16.490-07:00</SentTime>
        <SenderSoftware>
            <SenderSoftwareDeveloper>CURES</SenderSoftwareDeveloper>
            <SenderSoftwareProduct>CURES</SenderSoftwareProduct>
            <SenderSoftwareVersionRelease>1.0</SenderSoftwareVersionRelease>

```

## CURES Information Exchange Web Service Implementation Guide

```
</SenderSoftware>
</Header>
<Body>
  <RxHistoryResponse>
    <Response>
      <Approved/>
    </Response>
    <BenefitsCoordination>
      <Consent>Y</Consent>
    </BenefitsCoordination>
    <Patient>
      <HumanPatient xsi:type="Patient" xmlns:xsi="http://www.w3.org/2001/XMLSchema-
instance">
        <Identification>
          <PatientAccountNumber>2f737711646b402c94f93a2cfa6556ff</PatientAccountNum
ber>
        </Identification>
        <Names>
          <Name>
            <LastName>ESMNVKXX</LastName>
            <FirstName>CAOWOQ</FirstName>
          </Name>
        </Names>
        <GenderAndSex>
          <AdministrativeGender>F</AdministrativeGender>
        </GenderAndSex>
        <DateOfBirth>
          <Date>2030-08-11</Date>
        </DateOfBirth>
        <Address>
          <AddressLine1>88642 JLLVJIMWEY</AddressLine1>
          <City>TBINCQ</City>
          <StateProvince>CA</StateProvince>
          <PostalCode>41750</PostalCode>
        </Address>
      </HumanPatient>
    </Patient>
    <MedicationDispensed>
      <DrugDescription>CLONAZEPAM|0.5 MG|TAB</DrugDescription>
      <Product>
        <DrugCoded>
          <NDC>16729013616</NDC>
        </DrugCoded>
      </Product>
      <Quantity>
        <Value>90</Value>
        <CodeListQualifier>87</CodeListQualifier>
        <QuantityUnitOfMeasure>
          <Code>C38046</Code>
        </QuantityUnitOfMeasure>
      </Quantity>
    </MedicationDispensed>
  </RxHistoryResponse>
</Body>
```

## CURES Information Exchange Web Service Implementation Guide

```
</QuantityUnitOfMeasure>
</Quantity>
<DaysSupply>30</DaysSupply>
<LastFillDate>
  <Date>2024-02-01</Date>
</LastFillDate>
<Substitutions>
  <Substitutions>0</Substitutions>
</Substitutions>
<Note>RefillsAuthorized:0</Note>
<HistoryPrescriberOrderNumber>ASR181214A02068</HistoryPrescriberOrderNumber>
<Pharmacy>
  <Identification>
    <NCPDPID>--</NCPDPID>
    <StateLicenseNumber>PHY48018</StateLicenseNumber>
    <NPI>--</NPI>
  </Identification>
  <BusinessName>STR OQZXQVLG #4151</BusinessName>
  <Address>
    <AddressLine1>4372 CJVU 451ZF RAMXLU</AddressLine1>
    <City>ANGIE</City>
    <StateProvince>LA</StateProvince>
    <PostalCode>70426</PostalCode>
  </Address>
</Pharmacy>
<Prescriber>
  <NonVeterinarian>
    <Identification>
      <DEANumber>RH5120442</DEANumber>
      <NPI>--</NPI>
    </Identification>
    <Names>
      <Name>
        <LastName>TFEOE, MCBVPNW Y IB</LastName>
        <FirstName>TFEOE, MCBVPNW Y IB</FirstName>
      </Name>
    </Names>
    <Address>
      <City>NCSFMJZ CVAFI</City>
    </Address>
  </NonVeterinarian>
</Prescriber>
<HistorySource>
  <Source>
    <SourceQualifier>Pharmacy</SourceQualifier>
  </Source>
  <SourceReference>0151349302</SourceReference>
  <FillNumber>00</FillNumber>
  <PaymentType>4</PaymentType>
```



```

        </HistorySource>
        <OtherMedicationDates>
            <OtherMedicationDate>
                <Date>2024-02-02</Date>
            </OtherMedicationDate>
            <OtherMedicationDateQualifier>SoldDate</OtherMedicationDateQualifier>
        </OtherMedicationDates>
        <Extension name="Daily MME"
url="https://cures.doj.ca.gov/extensions/prescriptions/dailymme">
            <Decimal>120.0</Decimal>
        </Extension>
        <Extension name="Total MME"
url="https://cures.doj.ca.gov/extensions/prescriptions/totalmme">
            <Decimal>3600.0</Decimal>
        </Extension>
        <Extension name="Originating State"
url="https://cures.doj.ca.gov/extensions/prescriptions/originatingstate">
            <String>California</String>
        </Extension>
    </MedicationDispensed>
    <RequestedDates>
        <StartDate>
            <Date>2023-02-02</Date>
        </StartDate>
        <EndDate>
            <Date>2024-02-02</Date>
        </EndDate>
    </RequestedDates>
</RxHistoryResponse>
</Body>
</Message>

```

## 8.7.2 CURES Data: One Animal Patient Entity Result – Prescription Data Response

```

<?xml version="1.0" encoding="UTF-8" standalone="yes"?>
<Message DatatypesVersion="20230115" TransportVersion="20230115" TransactionDomain="SCRIPT"
TransactionVersion="20230115" StructuresVersion="20230115" ECLVersion="20230115">
    <Header>
        <To Qualifier="ZZZ">Company Location #123</To>
        <From Qualifier="ZZZ">CURES</From>
        <MessageID>fcb01c25-a641-4450-a77b-faf7d3603cc</MessageID>
        <RelatesToMessageID>PATIENTS-V2023011-001</RelatesToMessageID>
        <SentTime>2024-09-18T08:58:21.919-07:00</SentTime>
        <SenderSoftware>
            <SenderSoftwareDeveloper>CURES</SenderSoftwareDeveloper>
            <SenderSoftwareProduct>CURES</SenderSoftwareProduct>
            <SenderSoftwareVersionRelease>1.0</SenderSoftwareVersionRelease>
        </SenderSoftware>
    </Header>

```

## CURES Information Exchange Web Service Implementation Guide

```
<Body>
  <RxHistoryResponse>
    <Response>
      <Approved/>
    </Response>
    <BenefitsCoordination>
      <Consent>Y</Consent>
    </BenefitsCoordination>
    <Patient>
      <HumanPatient xsi:type="Patient" xmlns:xsi="http://www.w3.org/2001/XMLSchema-
instance">
        <Identification>
          <PatientAccountNumber>545c57fc6594477bb130c2c18c7edc01</PatientAccountNum
ber>
        </Identification>
        <Names>
          <Name>
            <LastName>ANIMALOWNER</LastName>
            <FirstName>J</FirstName>
          </Name>
        </Names>
        <GenderAndSex>
          <AdministrativeGender>M</AdministrativeGender>
        </GenderAndSex>
        <DateOfBirth>
          <Date>1950-02-11</Date>
        </DateOfBirth>
        <Address>
          <AddressLine1>400 E VHWA RKI</AddressLine1>
          <City>XGCZVE</City>
          <StateProvince>CA</StateProvince>
          <PostalCode>42311</PostalCode>
        </Address>
        <Extension name="Species"
url="https://cures.doj.ca.gov/extensions/patient/species">
          <String>Animal</String>
        </Extension>
        <Extension name="Pet Name"
url="https://cures.doj.ca.gov/extensions/patient/animalname">
          <String>Fido10</String>
        </Extension>
      </HumanPatient>
    </Patient>
    <MedicationDispensed>
      <DrugDescription>CLONAZEPAM|0.5 MG|TAB</DrugDescription>
      <Product>
        <DrugCoded>
          <NDC>16729013616</NDC>
        </DrugCoded>
```

## CURES Information Exchange Web Service Implementation Guide

```
</Product>
<Quantity>
  <Value>90</Value>
  <CodeListQualifier>87</CodeListQualifier>
  <QuantityUnitOfMeasure>
    <Code>C38046</Code>
  </QuantityUnitOfMeasure>
</Quantity>
<DaysSupply>30</DaysSupply>
<LastFillDate>
  <Date>2024-03-14</Date>
</LastFillDate>
<Substitutions>
  <Substitutions>0</Substitutions>
</Substitutions>
<Note>RefillsAuthorized:0</Note>
<HistoryPrescriberOrderNumber>ABA195A00115</HistoryPrescriberOrderNumber>
<Pharmacy>
  <Identification>
    <NCPDPID>--</NCPDPID>
    <StateLicenseNumber>PHY48018</StateLicenseNumber>
    <NPI>--</NPI>
  </Identification>
  <BusinessName>STR OQZXQVLG #4151</BusinessName>
  <Address>
    <AddressLine1>4372 CJVU 451ZF RAMXLU</AddressLine1>
    <City>ANGIE</City>
    <StateProvince>LA</StateProvince>
    <PostalCode>70426</PostalCode>
  </Address>
</Pharmacy>
<Prescriber>
  <NonVeterinarian>
    <Identification>
      <DEANumber>RH5120442</DEANumber>
      <NPI>--</NPI>
    </Identification>
    <Names>
      <Name>
        <LastName>TFEOE, MCBVPNW Y IB</LastName>
        <FirstName>TFEOE, MCBVPNW Y IB</FirstName>
      </Name>
    </Names>
    <Address>
      <City>NCSFMJZ CVAFI</City>
    </Address>
  </NonVeterinarian>
</Prescriber>
<HistorySource>
```

## CURES Information Exchange Web Service Implementation Guide

```
<Source>
  <SourceQualifier>Pharmacy</SourceQualifier>
</Source>
<SourceReference>0151349302</SourceReference>
<FillNumber>00</FillNumber>
<PaymentType>4</PaymentType>
</HistorySource>
<OtherMedicationDates>
  <OtherMedicationDate>
    <Date>2024-03-15</Date>
  </OtherMedicationDate>
  <OtherMedicationDateQualifier>SoldDate</OtherMedicationDateQualifier>
</OtherMedicationDates>
<Extension name="Daily MME"
url="https://cures.doj.ca.gov/extensions/prescriptions/dailymme">
  <Decimal>120.0</Decimal>
</Extension>
<Extension name="Total MME"
url="https://cures.doj.ca.gov/extensions/prescriptions/totalmme">
  <Decimal>3600.0</Decimal>
</Extension>
<Extension name="Originating State"
url="https://cures.doj.ca.gov/extensions/prescriptions/originatingstate">
  <String>California</String>
</Extension>
</MedicationDispensed>
<MedicationDispensed>
  <DrugDescription>CLONAZEPAM|0.5 MG|TAB</DrugDescription>
  <Product>
    <DrugCoded>
      <NDC>16729013616</NDC>
    </DrugCoded>
  </Product>
  <Quantity>
    <Value>90</Value>
    <CodeListQualifier>87</CodeListQualifier>
    <QuantityUnitOfMeasure>
      <Code>C38046</Code>
    </QuantityUnitOfMeasure>
  </Quantity>
  <DaysSupply>30</DaysSupply>
  <LastFillDate>
    <Date>2024-03-14</Date>
  </LastFillDate>
  <Substitutions>
    <Substitutions>0</Substitutions>
  </Substitutions>
  <Note>RefillsAuthorized:0</Note>
  <HistoryPrescriberOrderNumber>ABA195A01133</HistoryPrescriberOrderNumber>
```

# CURES Information Exchange Web Service Implementation Guide

```
<Pharmacy>
  <Identification>
    <NCPDPID>-</NCPDPID>
    <StateLicenseNumber>PHY48018</StateLicenseNumber>
    <NPI>-</NPI>
  </Identification>
  <BusinessName>STR OQZXQVLG #4151</BusinessName>
  <Address>
    <AddressLine1>4372 CJVU 451ZF RAMXLU</AddressLine1>
    <City>ANGIE</City>
    <StateProvince>LA</StateProvince>
    <PostalCode>70426</PostalCode>
  </Address>
</Pharmacy>
<Prescriber>
  <NonVeterinarian>
    <Identification>
      <DEANumber>RH5120442</DEANumber>
      <NPI>-</NPI>
    </Identification>
    <Names>
      <Name>
        <LastName>TFEOE, MCBVPNW Y IB</LastName>
        <FirstName>TFEOE, MCBVPNW Y IB</FirstName>
      </Name>
    </Names>
    <Address>
      <City>NCSFMJZ CVAFI</City>
    </Address>
  </NonVeterinarian>
</Prescriber>
<HistorySource>
  <Source>
    <SourceQualifier>Pharmacy</SourceQualifier>
  </Source>
  <SourceReference>0151349302</SourceReference>
  <FillNumber>00</FillNumber>
  <PaymentType>4</PaymentType>
</HistorySource>
<OtherMedicationDates>
  <OtherMedicationDate>
    <Date>2024-03-15</Date>
  </OtherMedicationDate>
  <OtherMedicationDateQualifier>SoldDate</OtherMedicationDateQualifier>
</OtherMedicationDates>
  <Extension name="Daily MME"
url="https://cures.doj.ca.gov/extensions/prescriptions/dailymme">
    <Decimal>120.0</Decimal>
  </Extension>
```

## CURES Information Exchange Web Service Implementation Guide

```
<Extension name="Total MME"
url="https://cures.doj.ca.gov/extensions/prescriptions/totalmme">
  <Decimal>3600.0</Decimal>
</Extension>
<Extension name="Originating State"
url="https://cures.doj.ca.gov/extensions/prescriptions/originatingstate">
  <String>California</String>
</Extension>
</MedicationDispensed>
<MedicationDispensed>
  <DrugDescription>CLONAZEPAM|0.5 MG|TAB</DrugDescription>
  <Product>
    <DrugCoded>
      <NDC>16729013616</NDC>
    </DrugCoded>
  </Product>
  <Quantity>
    <Value>90</Value>
    <CodeListQualifier>87</CodeListQualifier>
    <QuantityUnitOfMeasure>
      <Code>C38046</Code>
    </QuantityUnitOfMeasure>
  </Quantity>
  <DaysSupply>30</DaysSupply>
  <LastFillDate>
    <Date>2024-03-14</Date>
  </LastFillDate>
  <Substitutions>
    <Substitutions>0</Substitutions>
  </Substitutions>
  <Note>RefillsAuthorized:0</Note>
  <HistoryPrescriberOrderNumber>ABA195A00116</HistoryPrescriberOrderNumber>
  <Pharmacy>
    <Identification>
      <NCPDPID>-</NCPDPID>
      <StateLicenseNumber>PHY48018</StateLicenseNumber>
      <NPI>-</NPI>
    </Identification>
    <BusinessName>STR OQZXQVLG #4151</BusinessName>
    <Address>
      <AddressLine1>4372 CJVU 451ZF RAMXLU</AddressLine1>
      <City>ANGIE</City>
      <StateProvince>LA</StateProvince>
      <PostalCode>70426</PostalCode>
    </Address>
  </Pharmacy>
  <Prescriber>
    <NonVeterinarian>
      <Identification>
```

## CURES Information Exchange Web Service Implementation Guide

```
        <DEANumber>RH5120442</DEANumber>
        <NPI>-</NPI>
    </Identification>
    <Names>
        <Name>
            <LastName>TFEOE, MCBVPNW Y IB</LastName>
            <FirstName>TFEOE, MCBVPNW Y IB</FirstName>
        </Name>
    </Names>
    <Address>
        <City>NCSFMJZ CVAFI</City>
    </Address>
</NonVeterinarian>
</Prescriber>
<HistorySource>
    <Source>
        <SourceQualifier>Pharmacy</SourceQualifier>
    </Source>
    <SourceReference>0151349302</SourceReference>
    <FillNumber>00</FillNumber>
    <PaymentType>4</PaymentType>
</HistorySource>
<OtherMedicationDates>
    <OtherMedicationDate>
        <Date>2024-03-15</Date>
    </OtherMedicationDate>
    <OtherMedicationDateQualifier>SoldDate</OtherMedicationDateQualifier>
</OtherMedicationDates>
<Extension name="Daily MME"
url="https://cures.doj.ca.gov/extensions/prescriptions/dailymme">
    <Decimal>120.0</Decimal>
</Extension>
<Extension name="Total MME"
url="https://cures.doj.ca.gov/extensions/prescriptions/totalmme">
    <Decimal>3600.0</Decimal>
</Extension>
<Extension name="Originating State"
url="https://cures.doj.ca.gov/extensions/prescriptions/originatingstate">
    <String>California</String>
</Extension>
</MedicationDispensed>
<RequestedDates>
    <StartDate>
        <Date>2024-03-14</Date>
    </StartDate>
    <EndDate>
        <Date>2024-03-16</Date>
    </EndDate>
</RequestedDates>
```

```

    </RxHistoryResponse>
  </Body>
</Message>

```

## 8.7.3 CURES Data: Multiple Patients Matched (for Picklist) Response

```

<?xml version="1.0" encoding="UTF-8" standalone="yes"?>
<Message DatatypesVersion="20230115" TransportVersion="20230115" TransactionDomain="SCRIPT"
TransactionVersion="20230115" StructuresVersion="20230115" ECLVersion="20230115">
  <Header>
    <To Qualifier="ZZZ">Company Location #123</To>
    <From Qualifier="ZZZ">CURES</From>
    <MessageID>97838006-d49e-415a-814a-f972305885d</MessageID>
    <RelatesToMessageID>PATIENTS-V2023011-001</RelatesToMessageID>
    <SentTime>2024-09-18T09:21:05.208-07:00</SentTime>
    <SenderSoftware>
      <SenderSoftwareDeveloper>CURES</SenderSoftwareDeveloper>
      <SenderSoftwareProduct>CURES</SenderSoftwareProduct>
      <SenderSoftwareVersionRelease>1.0</SenderSoftwareVersionRelease>
    </SenderSoftware>
  </Header>
  <Body>
    <RxHistoryResponse>
      <Response>
        <Denied/>
      </Response>
      <BenefitsCoordination>
        <Consent>Y</Consent>
      </BenefitsCoordination>
      <Patient>
        <HumanPatient>
          <Names>
            <Name>
              <LastName>DOE</LastName>
              <FirstName>L</FirstName>
            </Name>
          </Names>
          <GenderAndSex>
            <AdministrativeGender>U</AdministrativeGender>
          </GenderAndSex>
          <DateOfBirth>
            <Date>1950-02-11</Date>
          </DateOfBirth>
        </HumanPatient>
      </Patient>
      <MedicationDispensed>
        <DrugDescription>Use Patient Account Number(s) from this response to get a PAR
via the /iews/prescriptions web service.</DrugDescription>

```



## CURES Information Exchange Web Service Implementation Guide

```
<Quantity>
  <Value>0</Value>
  <CodeListQualifier>87</CodeListQualifier>
  <QuantityUnitOfMeasure>
    <Code>C38046</Code>
  </QuantityUnitOfMeasure>
</Quantity>
<LastFillDate>
  <Date>1900-01-01</Date>
</LastFillDate>
<Substitutions>
  <Substitutions>0</Substitutions>
</Substitutions>
<Note>RxCount:3</Note>
<Patient>
  <Identification>
    <PatientAccountNumber>023d5362932b496888f8725a5064099f</PatientAccountNum
ber>
  </Identification>
  <Names>
    <Name>
      <LastName>DOE</LastName>
      <FirstName>LAURA</FirstName>
    </Name>
  </Names>
  <GenderAndSex>
    <AdministrativeGender>F</AdministrativeGender>
  </GenderAndSex>
  <DateOfBirth>
    <Date>1950-02-11</Date>
  </DateOfBirth>
  <Address>
    <AddressLine1>400 E VHWA RKI</AddressLine1>
    <City>XGCZVE</City>
    <StateProvince>CA</StateProvince>
    <PostalCode>42311</PostalCode>
  </Address>
  <Extension name="Species"
url="https://cures.doj.ca.gov/extensions/patient/species">
    <String>Animal</String>
  </Extension>
  <Extension name="Pet Name"
url="https://cures.doj.ca.gov/extensions/patient/animalname">
    <String>Fido10</String>
  </Extension>
</Patient>
<OtherMedicationDates>
  <OtherMedicationDate>
    <Date>1900-01-01</Date>
```

## CURES Information Exchange Web Service Implementation Guide

```

        </OtherMedicationDate>
        <OtherMedicationDateQualifier>SoldDate</OtherMedicationDateQualifier>
    </OtherMedicationDates>
</MedicationDispensed>
<MedicationDispensed>
    <DrugDescription>Use Patient Account Number(s) from this response to get a PAR
via the /iews/prescriptions web service.</DrugDescription>
    <Quantity>
        <Value>0</Value>
        <CodeListQualifier>87</CodeListQualifier>
        <QuantityUnitOfMeasure>
            <Code>C38046</Code>
        </QuantityUnitOfMeasure>
    </Quantity>
    <LastFillDate>
        <Date>1900-01-01</Date>
    </LastFillDate>
    <Substitutions>
        <Substitutions>0</Substitutions>
    </Substitutions>
    <Note>RxCount:1</Note>
    <Patient>
        <Identification>
            <PatientAccountNumber>78503054f4994a358356154d2b37ca6f</PatientAccountNum
ber>
        </Identification>
        <Names>
            <Name>
                <LastName>DOE</LastName>
                <FirstName>LAURA C.</FirstName>
            </Name>
        </Names>
        <GenderAndSex>
            <AdministrativeGender>F</AdministrativeGender>
        </GenderAndSex>
        <DateOfBirth>
            <Date>1950-02-11</Date>
        </DateOfBirth>
        <Address>
            <AddressLine1>400 E VHWA RKI</AddressLine1>
            <City>XGCZVE</City>
            <StateProvince>CA</StateProvince>
            <PostalCode>42311</PostalCode>
        </Address>
    </Patient>
<OtherMedicationDates>
    <OtherMedicationDate>
        <Date>1900-01-01</Date>
    </OtherMedicationDate>

```

```

        <OtherMedicationDateQualifier>SoldDate</OtherMedicationDateQualifier>
    </OtherMedicationDates>
</MedicationDispensed>
<RequestedDates>
    <StartDate>
        <Date>2024-02-01</Date>
    </StartDate>
    <EndDate>
        <Date>2024-03-16</Date>
    </EndDate>
</RequestedDates>
</RxHistoryResponse>
</Body>
</Message>

```

## 8.7.4 CURES Data: Multiple Patients Matched (for Non-Picklist) Response

```

<?xml version="1.0" encoding="UTF-8" standalone="yes"?>
<Message DatatypesVersion="20230115" TransportVersion="20230115" TransactionDomain="SCRIPT"
TransactionVersion="20230115" StructuresVersion="20230115" ECLVersion="20230115">
    <Header>
        <To Qualifier="ZZZ">Company Location #123</To>
        <From Qualifier="ZZZ">CURES</From>
        <MessageID>3312611b-84f4-4d8a-aac2-55958144095</MessageID>
        <RelatesToMessageID>PATIENTS-V2023011-001</RelatesToMessageID>
        <SentTime>2024-09-09T08:18:41.115-07:00</SentTime>
        <SenderSoftware>
            <SenderSoftwareDeveloper>CURES</SenderSoftwareDeveloper>
            <SenderSoftwareProduct>CURES</SenderSoftwareProduct>
            <SenderSoftwareVersionRelease>1.0</SenderSoftwareVersionRelease>
        </SenderSoftware>
    </Header>
    <Body>
        <Status>
            <Code>000</Code>
            <DescriptionCode>4010</DescriptionCode>
            <Description>Multiple patient matches. Please search via
https://cures.doj.ca.gov.</Description>
        </Status>
    </Body>
</Message>

```

## 8.7.5 CURES Data: No Result (Status Response)

```

<?xml version="1.0" encoding="UTF-8" standalone="yes"?>
<Message DatatypesVersion="20230115" TransportVersion="20230115" TransactionDomain="SCRIPT"
TransactionVersion="20230115" StructuresVersion="20230115" ECLVersion="20230115">
    <Header>
        <To Qualifier="ZZZ">Company Location #123</To>
        <From Qualifier="ZZZ">CURES</From>

```

## CURES Information Exchange Web Service Implementation Guide

```
<MessageID>06db27e1-17bf-4f54-9af7-92a89c7dac3</MessageID>
<RelatesToMessageID>PATIENTS-V2023011-001</RelatesToMessageID>
<SentTime>2024-09-09T08:20:53.820-07:00</SentTime>
<SenderSoftware>
  <SenderSoftwareDeveloper>CURES</SenderSoftwareDeveloper>
  <SenderSoftwareProduct>CURES</SenderSoftwareProduct>
  <SenderSoftwareVersionRelease>1.0</SenderSoftwareVersionRelease>
</SenderSoftware>
</Header>
<Body>
  <Status>
    <Code>000</Code>
    <DescriptionCode>1000</DescriptionCode>
    <Description>No result found.</Description>
  </Status>
</Body>
</Message>
```

### 8.8 /iews/patients: Interstate Data Request Sample

```
<?xml version="1.0" encoding="UTF-8"?>
<Message DatatypesVersion="2023011" TransportVersion="2023011" TransactionVersion="2023011"
StructuresVersion="2023011" ECLVersion="2023011" TransactionDomain="SCRIPT"
xmlns:xsi="http://www.w3.org/2001/XMLSchema-instance">
  <Header>
    <To Qualifier="ZZZ">CURES</To>
    <From Qualifier="ZZZ">Company Location #123</From>
    <MessageID>INTERSTATE PATIENT-V2023011-001</MessageID>
    <SentTime>2024-06-04T16:00:47Z</SentTime>
    <Security>
      <UsernameToken>
        <Username>Company</Username>
      </UsernameToken>
      <Sender>
        <SecondaryIdentification>Company Location #123</SecondaryIdentification>
      </Sender>
      <Receiver/>
    </Security>
    <SenderSoftware>
      <SenderSoftwareDeveloper>HIT Software Developer</SenderSoftwareDeveloper>
      <SenderSoftwareProduct>CURES IEWS Client</SenderSoftwareProduct>
      <SenderSoftwareVersionRelease>1.0</SenderSoftwareVersionRelease>
    </SenderSoftware>
  </Header>
  <Body>
    <RxHistoryRequest>
      <BenefitsCoordination>
        <Consent>Y</Consent>
      </BenefitsCoordination>
    </RxHistoryRequest>
  </Body>
</Message>
```

```

</BenefitsCoordination>
<Patient>
  <HumanPatient>
    <Names>
      <Name>
        <LastName>VDHXMWV</LastName>
        <FirstName>XRUSXJN</FirstName>
      </Name>
    </Names>
    <GenderAndSex>
      <AdministrativeGender>U</AdministrativeGender>
    </GenderAndSex>
    <DateOfBirth>
      <Date>2034-11-24</Date>
    </DateOfBirth>
  </HumanPatient>
</Patient>
<Pharmacy>
  <Pharmacist>
    <Identification>
      <StateLicenseNumber>9988</StateLicenseNumber>
    </Identification>
    <Names>
      <Name>
        <LastName>DOE</LastName>
        <FirstName>AMY</FirstName>
      </Name>
    </Names>
  </Pharmacist>
  <BusinessName>PHARMACY BUSINESS NAME</BusinessName>
</Pharmacy>
<RequestedDates>
  <StartDate>
    <Date>2024-01-06</Date>
  </StartDate>
  <EndDate>
    <Date>2024-09-06</Date>
  </EndDate>
</RequestedDates>
<PDMPStatesRequested>
  <StateProvince>OR</StateProvince>
</PDMPStatesRequested>
</RxHistoryRequest>
</Body>
</Message>

```

## 8.9 /iews/patients: Interstate Data Response Samples

### 8.9.1 Interstate: One Patient Entity Result – Prescription Data Response

# CURES Information Exchange Web Service Implementation Guide

```
<?xml version="1.0" encoding="UTF-8" standalone="yes"?>
<Message DatatypesVersion="20230115" TransportVersion="20230115" TransactionDomain="SCRIPT"
TransactionVersion="20230115" StructuresVersion="20230115" ECLVersion="20230115">
  <Header>
    <To Qualifier="ZZZ">Company Location #123</To>
    <From Qualifier="ZZZ">CURES</From>
    <MessageID>63cd92be-2a5e-4981-ae83-36a8525f730</MessageID>
    <RelatesToMessageID>INTERSTATE PATIENTS-V2023011-001</RelatesToMessageID>
    <SentTime>2024-09-16T16:58:33.052-07:00</SentTime>
    <SenderSoftware>
      <SenderSoftwareDeveloper>CURES</SenderSoftwareDeveloper>
      <SenderSoftwareProduct>CURES</SenderSoftwareProduct>
      <SenderSoftwareVersionRelease>1.0</SenderSoftwareVersionRelease>
    </SenderSoftware>
  </Header>
  <Body>
    <RxHistoryResponse>
      <Response>
        <Approved/>
      </Response>
      <BenefitsCoordination>
        <Consent>Y</Consent>
      </BenefitsCoordination>
      <Patient>
        <HumanPatient xsi:type="Patient" xmlns:xsi="http://www.w3.org/2001/XMLSchema-
instance">
          <Identification>
            <PatientAccountNumber>0a9d371a60894982a6cc161f0010d9f4</PatientAccountNum
ber>
          </Identification>
          <Names>
            <Name>
              <LastName>ESMNVKXX</LastName>
              <FirstName>CAOWOQ</FirstName>
            </Name>
          </Names>
          <GenderAndSex>
            <AdministrativeGender>F</AdministrativeGender>
          </GenderAndSex>
          <DateOfBirth>
            <Date>2030-08-11</Date>
          </DateOfBirth>
          <Address>
            <AddressLine1>88642 JLLVJIMWEY</AddressLine1>
            <City>TBINCQ</City>
            <StateProvince>CA</StateProvince>
            <PostalCode>41750</PostalCode>
          </Address>
        </HumanPatient>
      </Patient>
    </RxHistoryResponse>
  </Body>
</Message>
```

## CURES Information Exchange Web Service Implementation Guide

```
</Patient>
<MedicationDispensed>
  <DrugDescription>CLONAZEPAM|0.5 MG|TAB</DrugDescription>
  <Product>
    <DrugCoded>
      <NDC>16729013616</NDC>
    </DrugCoded>
  </Product>
  <Quantity>
    <Value>90</Value>
    <CodeListQualifier>87</CodeListQualifier>
    <QuantityUnitOfMeasure>
      <Code>C38046</Code>
    </QuantityUnitOfMeasure>
  </Quantity>
  <DaysSupply>30</DaysSupply>
  <LastFillDate>
    <Date>2024-02-01</Date>
  </LastFillDate>
  <Substitutions>
    <Substitutions>0</Substitutions>
  </Substitutions>
  <Note>RefillsAuthorized:0</Note>
  <HistoryPrescriberOrderNumber>ASR181214A02068</HistoryPrescriberOrderNumber>
  <Pharmacy>
    <Identification>
      <NCPDPID>-</NCPDPID>
      <StateLicenseNumber>PHY48018</StateLicenseNumber>
      <NPI>-</NPI>
    </Identification>
    <BusinessName>STR OQZXQVLG #4151</BusinessName>
    <Address>
      <AddressLine1>4372 CJVU 451ZF RAMXLU</AddressLine1>
      <City>ANGIE</City>
      <StateProvince>LA</StateProvince>
      <PostalCode>70426</PostalCode>
    </Address>
  </Pharmacy>
  <Prescriber>
    <NonVeterinarian>
      <Identification>
        <DEANumber>RH5120442</DEANumber>
        <NPI>-</NPI>
      </Identification>
      <Names>
        <Name>
          <LastName>TFEOE, MCBVPNW Y IB</LastName>
          <FirstName>TFEOE, MCBVPNW Y IB</FirstName>
        </Name>
      </Names>
    </NonVeterinarian>
  </Prescriber>
</MedicationDispensed>
</Patient>
```

# CURES Information Exchange Web Service Implementation Guide

```
        </Names>
        <Address>
            <City>NCSFMJZ CVAFI</City>
        </Address>
    </NonVeterinarian>
</Prescriber>
<HistorySource>
    <Source>
        <SourceQualifier>Pharmacy</SourceQualifier>
    </Source>
    <SourceReference>0151349302</SourceReference>
    <FillNumber>00</FillNumber>
    <PaymentType>4</PaymentType>
</HistorySource>
<OtherMedicationDates>
    <OtherMedicationDate>
        <Date>2024-02-02</Date>
    </OtherMedicationDate>
    <OtherMedicationDateQualifier>SoldDate</OtherMedicationDateQualifier>
</OtherMedicationDates>
<Extension name="Daily MME"
url="https://cures.doj.ca.gov/extensions/prescriptions/dailymme">
    <Decimal>120.0</Decimal>
</Extension>
<Extension name="Total MME"
url="https://cures.doj.ca.gov/extensions/prescriptions/totalmme">
    <Decimal>3600.0</Decimal>
</Extension>
<Extension name="Originating State"
url="https://cures.doj.ca.gov/extensions/prescriptions/originatingstate">
    <String>Oregon</String>
</Extension>
</MedicationDispensed>
<RequestedDates>
    <StartDate>
        <Date>2023-02-02</Date>
    </StartDate>
    <EndDate>
        <Date>2024-02-02</Date>
    </EndDate>
</RequestedDates>
<PDMPStatesResponded>
    <PDMPStates>
        <StateProvince>OR</StateProvince>
        <ReasonCode>DK</ReasonCode>
    </PDMPStates>
</PDMPStatesResponded>
</RxHistoryResponse>
</Body>
```



</Message>

## 8.9.2 Interstate: Multiple Patients Matched (for Picklist) Response

```
<?xml version="1.0" encoding="UTF-8" standalone="yes"?>
<Message DatatypesVersion="20230115" TransportVersion="20230115" TransactionDomain="SCRIPT"
TransactionVersion="20230115" StructuresVersion="20230115" ECLVersion="20230115">
  <Header>
    <To Qualifier="ZZZ">Company Location #123</To>
    <From Qualifier="ZZZ">CURES</From>
    <MessageID>bea58602-6e7a-4c31-95e3-291f3a1a28c</MessageID>
    <RelatesToMessageID>INTERSTATE PATIENTS-V2023011-001</RelatesToMessageID>
    <SentTime>2024-09-16T16:31:04.344-07:00</SentTime>
    <SenderSoftware>
      <SenderSoftwareDeveloper>CURES</SenderSoftwareDeveloper>
      <SenderSoftwareProduct>CURES</SenderSoftwareProduct>
      <SenderSoftwareVersionRelease>1.0</SenderSoftwareVersionRelease>
    </SenderSoftware>
  </Header>
  <Body>
    <RxHistoryResponse>
      <Response>
        <Denied/>
      </Response>
      <BenefitsCoordination>
        <Consent>Y</Consent>
      </BenefitsCoordination>
      <Patient>
        <HumanPatient>
          <Names>
            <Name>
              <LastName>TPRWV</LastName>
              <FirstName>LSR</FirstName>
            </Name>
          </Names>
          <GenderAndSex>
            <AdministrativeGender>U</AdministrativeGender>
          </GenderAndSex>
          <DateOfBirth>
            <Date>1950-01-09</Date>
          </DateOfBirth>
        </HumanPatient>
      </Patient>
      <MedicationDispensed>
        <DrugDescription>Use Patient Account Number(s) from this response to get a PAR
via the /iews/prescriptions web service.</DrugDescription>
        <Quantity>
          <Value>0</Value>
        </Quantity>
      </MedicationDispensed>
    </RxHistoryResponse>
  </Body>
</Message>
```

## CURES Information Exchange Web Service Implementation Guide

```
<CodeListQualifier>87</CodeListQualifier>
<QuantityUnitOfMeasure>
  <Code>C38046</Code>
</QuantityUnitOfMeasure>
</Quantity>
<LastFillDate>
  <Date>1900-01-01</Date>
</LastFillDate>
<Substitutions>
  <Substitutions>0</Substitutions>
</Substitutions>
<Note>RxCount:1</Note>
<Patient>
  <Identification>
    <PatientAccountNumber>4ed184a87b2447aea3fa6ebafcc63f55</PatientAccountNum
ber>
  </Identification>
  <Names>
    <Name>
      <LastName>TPRWV</LastName>
      <FirstName>LSR</FirstName>
    </Name>
  </Names>
  <GenderAndSex>
    <AdministrativeGender>M</AdministrativeGender>
  </GenderAndSex>
  <DateOfBirth>
    <Date>1950-01-09</Date>
  </DateOfBirth>
  <Address>
    <AddressLine1>54307 LBMASCY EUN</AddressLine1>
    <City>JYXDIQXU</City>
    <StateProvince>CA</StateProvince>
    <PostalCode>82156</PostalCode>
  </Address>
</Patient>
<OtherMedicationDates>
  <OtherMedicationDate>
    <Date>1900-01-01</Date>
  </OtherMedicationDate>
  <OtherMedicationDateQualifier>SoldDate</OtherMedicationDateQualifier>
</OtherMedicationDates>
</MedicationDispensed>
<MedicationDispensed>
  <DrugDescription>Use Patient Account Number(s) from this response to get a PAR
via the /iews/prescriptions web service.</DrugDescription>
  <Quantity>
    <Value>0</Value>
  <CodeListQualifier>87</CodeListQualifier>
```

## CURES Information Exchange Web Service Implementation Guide

```
        <QuantityUnitOfMeasure>
          <Code>C38046</Code>
        </QuantityUnitOfMeasure>
      </Quantity>
    <LastFillDate>
      <Date>1900-01-01</Date>
    </LastFillDate>
    <Substitutions>
      <Substitutions>0</Substitutions>
    </Substitutions>
    <Note>RxCount:1</Note>
    <Patient>
      <Identification>
        <PatientAccountNumber>033dcf62eedb4d07a0b8637c66f9d8fe</PatientAccountNum
ber>
      </Identification>
      <Names>
        <Name>
          <LastName>TPRWV</LastName>
          <FirstName>LSR</FirstName>
        </Name>
      </Names>
      <GenderAndSex>
        <AdministrativeGender>M</AdministrativeGender>
      </GenderAndSex>
      <DateOfBirth>
        <Date>1950-01-09</Date>
      </DateOfBirth>
      <Address>
        <AddressLine1>154307 LBMASCY EUN</AddressLine1>
        <City>JYXDIQXU</City>
        <StateProvince>CA</StateProvince>
        <PostalCode>82156</PostalCode>
      </Address>
    </Patient>
    <OtherMedicationDates>
      <OtherMedicationDate>
        <Date>1900-01-01</Date>
      </OtherMedicationDate>
      <OtherMedicationDateQualifier>SoldDate</OtherMedicationDateQualifier>
    </OtherMedicationDates>
  </MedicationDispensed>
  <RequestedDates>
    <StartDate>
      <Date>2024-02-02</Date>
    </StartDate>
    <EndDate>
      <Date>2024-09-16</Date>
    </EndDate>
```

```

        </RequestedDates>
        <PDMPStatesResponded>
            <PDMPStates>
                <StateProvince>OR</StateProvince>
                <ReasonCode>DK</ReasonCode>
            </PDMPStates>
        </PDMPStatesResponded>
    </RxHistoryResponse>
</Body>
</Message>

```

### 8.9.3 Interstate: Multiple Patients Matched (for Non-Picklist) Response

```

<?xml version="1.0" encoding="UTF-8" standalone="yes"?>
<Message DatatypesVersion="20230115" TransportVersion="20230115" TransactionDomain="SCRIPT"
TransactionVersion="20230115" StructuresVersion="20230115" ECLVersion="20230115">
    <Header>
        <To Qualifier="ZZZ">Company Location #123</To>
        <From Qualifier="ZZZ">CURES</From>
        <MessageID>3312611b-84f4-4d8a-aac2-55958144095</MessageID>
        <RelatesToMessageID>INTERSTATE PATIENT-V2023011-001</RelatesToMessageID>
        <SentTime>2024-09-09T08:18:41.115-07:00</SentTime>
        <SenderSoftware>
            <SenderSoftwareDeveloper>CURES</SenderSoftwareDeveloper>
            <SenderSoftwareProduct>CURES</SenderSoftwareProduct>
            <SenderSoftwareVersionRelease>1.0</SenderSoftwareVersionRelease>
        </SenderSoftware>
    </Header>
    <Body>
        <Status>
            <Code>000</Code>
            <DescriptionCode>4010</DescriptionCode>
            <Description>Multiple patient matches. Please search via
https://cures.doj.ca.gov.</Description>
        </Status>
    </Body>
</Message>

```

### 8.9.4 Interstate: No Patient-Prescription Result Response Sample

```

<Message DatatypesVersion="20230115" TransportVersion="20230115" TransactionDomain="SCRIPT"
TransactionVersion="20230115" StructuresVersion="20230115" ECLVersion="20230115">
    <Header>
        <To Qualifier="ZZZ">Company Location #123</To>
        <From Qualifier="ZZZ">CURES</From>
        <MessageID>06db27e1-17bf-4f54-9af7-92a89c7dac3</MessageID>
        <RelatesToMessageID>INTERSTATE PATIENT-V2023011-001</RelatesToMessageID>
        <SentTime>2024-09-09T08:20:53.820-07:00</SentTime>
        <SenderSoftware>

```

```
<SenderSoftwareDeveloper>CURES</SenderSoftwareDeveloper>
<SenderSoftwareProduct>CURES</SenderSoftwareProduct>
<SenderSoftwareVersionRelease>1.0</SenderSoftwareVersionRelease>
</SenderSoftware>
</Header>
<Body>
  <Status>
    <Code>000</Code>
    <DescriptionCode>1000</DescriptionCode>
    <Description>No result found.</Description>
  </Status>
</Body>
</Message>
```

### 8.10 /iews/patients: Error/Status Response Sample

```
<?xml version="1.0" encoding="UTF-8" standalone="yes"?>
<Message DatatypesVersion="20230115" TransportVersion="20230115" TransactionDomain="SCRIPT"
TransactionVersion="20230115" StructuresVersion="20230115" ECLVersion="20230115">
  <Header>
    <To Qualifier="ZZZ">HIE</To>
    <From Qualifier="ZZZ">CURES</From>
    <MessageID>6f3dfff3-7e56-41a9-8446-2ed3b4e7a24</MessageID>
    <RelatesToMessageID>INTERSTATE PATIENT-V2023011-001</RelatesToMessageID>
    <SentTime>2024-09-16T16:45:06.197-07:00</SentTime>
    <SenderSoftware>
      <SenderSoftwareDeveloper>CURES</SenderSoftwareDeveloper>
      <SenderSoftwareProduct>CURES</SenderSoftwareProduct>
      <SenderSoftwareVersionRelease>1.0</SenderSoftwareVersionRelease>
    </SenderSoftware>
  </Header>
  <Body>
    <Error>
      <Code>900</Code>
      <DescriptionCode>500</DescriptionCode>
      <Description>Invalid request or Missing data.</Description>
    </Error>
  </Body>
</Message>
```

## 9 /IEWS/PRESCRIPTIONS

### 9.1 /iews/prescriptions Overview

This web service is used when a **/iews/patients** transaction results in multiple patient matches for an entity that supports a picklist. Requests submitted to the **/iews/prescriptions** web service are submitted via a RxHistoryRequest message. The **/iews/prescriptions** transaction should follow a successful **/iews/patients** transaction to obtain a PAR (via a RxHistoryResponse message).

Each **/iews/patients** patient picklist is valid for 24 hours. After 24 hours, another **/iews/patients** transaction must be executed to obtain a valid patient picklist that can be used for the **/iews/prescriptions** transaction. The process flow for the **/iews/prescriptions**:

1. The **/iews/patients** transaction returns a patient picklist via a RxHistoryResponse message.
2. The user identifies their patient(s) from the picklist via the **PatientAccountNumber** element.
3. The identified patient account number(s) are the input parameters for the **/iews/prescriptions** RxHistoryRequest message. (Refer to [/iews/patients Overview](#) for other RxHistoryRequest elements.)
4. The NCPDP format cannot accommodate multiple patients. If there are multiple matches from the picklist, the requesting entity must call this function multiple times, one for each match.

Upon successful processing of a RxHistoryRequest message, the method shall return a RxHistoryResponse message with the associated medication(s) dispensed. (Refer to [CURES Data Response - Single Patient Matched](#) and [Interstate Data Response - Single Patient Matched](#) for details.)

A Status message is returned for the following conditions:

1. The picklist has expired (24 hours has lapsed since the **/iews/patients** request).
2. The Patient Account Number is invalid
3. The patient has more than 300 prescriptions

(Refer to [Status/Error Codes](#) for details.)

## 9.2 Failed Request

If there is a functional failure, the system returns a NCPDP Error or Status message (refer to [Status/Error Codes](#) for details).

## 9.3 Erred Request

If the error is related to authentication or parsing the message, CURES IEWS returns an HTTP error.

## 9.4 /iews/prescriptions: Report Request Sample

```
<?xml version="1.0" encoding="UTF-8"?>
<Message DatatypesVersion="2023011" TransportVersion="2023011" TransactionVersion="2023011"
StructuresVersion="2023011" ECLVersion="2023011" TransactionDomain="SCRIPT"
xmlns:xsi="http://www.w3.org/2001/XMLSchema-instance">
  <Header>
    <To Qualifier="ZZZ">CURES</To>
    <From Qualifier="ZZZ">Company Location #123</From>
    <MessageID>PRESCRIPTIONS-V2023011-001</MessageID>
    <SentTime>2024-06-04T16:00:47Z</SentTime>
    <Security>
      <UsernameToken>
        <Username>Company</Username>
      </UsernameToken>
      <Sender>
        <SecondaryIdentification>Company Location #123</SecondaryIdentification>
      </Sender>
      <Receiver/>
    </Security>
    <SenderSoftware>
      <SenderSoftwareDeveloper>Software Developer</SenderSoftwareDeveloper>
      <SenderSoftwareProduct>CURES IEWS Client</SenderSoftwareProduct>
      <SenderSoftwareVersionRelease>1.0</SenderSoftwareVersionRelease>
    </SenderSoftware>
  </Header>
  <Body>
    <RxHistoryRequest>
      <BenefitsCoordination>
        <Consent>Y</Consent>
      </BenefitsCoordination>
      <Patient>
        <HumanPatient>
          <Identification>
            <PatientAccountNumber>b2d9863fb28d47a4bf5847f4c2103416</PatientAccountNum
ber>
```

```

        </Identification>
        <Names>
            <Name>
                <LastName>VDHXMWV</LastName>
                <FirstName>XRUSXJN</FirstName>
            </Name>
        </Names>
        <GenderAndSex>
            <AdministrativeGender>U</AdministrativeGender>
        </GenderAndSex>
        <DateOfBirth>
            <Date>2034-11-24</Date>
        </DateOfBirth>
    </HumanPatient>
</Patient>
<Pharmacy>
    <Pharmacist>
        <Identification>
            <StateLicenseNumber>9988</StateLicenseNumber>
        </Identification>
        <Names>
            <Name>
                <LastName>DOE</LastName>
                <FirstName>JOHN</FirstName>
            </Name>
        </Names>
    </Pharmacist>
    <BusinessName>PHARMACY BUSINESS NAME</BusinessName>
</Pharmacy>
<RequestedDates>
    <StartDate>
        <Date>2024-01-06</Date>
    </StartDate>
    <EndDate>
        <Date>2024-09-06</Date>
    </EndDate>
</RequestedDates>
</RxHistoryRequest>
</Body>
</Message>

```

## 9.5 /iews/prescriptions: Response Sample

```

<?xml version="1.0" encoding="UTF-8" standalone="yes"?>
<Message DatatypesVersion="20230115" TransportVersion="20230115" TransactionDomain="SCRIPT"
TransactionVersion="20230115" StructuresVersion="20230115" ECLVersion="20230115">
    <Header>
        <To Qualifier="ZZZ">Company Location #123</To>
        <From Qualifier="ZZZ">CURES</From>
    </Header>

```



```

<MessageID>34f5e7c5-1ca6-4341-9adc-7f244c4a254</MessageID>
<RelatesToMessageID>PATIENTS-V2023011-001</RelatesToMessageID>
<SentTime>2024-09-16T15:28:18.143-07:00</SentTime>
<SenderSoftware>
  <SenderSoftwareDeveloper>CURES</SenderSoftwareDeveloper>
  <SenderSoftwareProduct>CURES</SenderSoftwareProduct>
  <SenderSoftwareVersionRelease>1.0</SenderSoftwareVersionRelease>
</SenderSoftware>
</Header>
<Body>
  <RxHistoryResponse>
    <Response>
      <Approved/>
    </Response>
    <BenefitsCoordination>
      <Consent>Y</Consent>
    </BenefitsCoordination>
    <Patient>
      <HumanPatient xsi:type="Patient" xmlns:xsi="http://www.w3.org/2001/XMLSchema-
instance">
        <Identification>
          <PatientAccountNumber>1893000748ba44d9874a0790f3dac88b</PatientAccountNum
ber>
        </Identification>
        <Names>
          <Name>
            <LastName>VDHXMWV</LastName>
            <FirstName>XRUSXJN</FirstName>
          </Name>
        </Names>
        <GenderAndSex>
          <AdministrativeGender>M</AdministrativeGender>
        </GenderAndSex>
        <DateOfBirth>
          <Date>2034-11-24</Date>
        </DateOfBirth>
        <Address>
          <AddressLine1>2045 CNBUVGNIEO DI</AddressLine1>
          <City>VYBIVCN</City>
          <StateProvince>CA</StateProvince>
          <PostalCode>56237</PostalCode>
        </Address>
      </HumanPatient>
    </Patient>
    <MedicationDispensed>
      <DrugDescription>CLONAZEPAM|0.5 MG|TAB</DrugDescription>
      <Product>
        <DrugCoded>
          <NDC>16729013616</NDC>

```

```

    </DrugCoded>
  </Product>
  <Quantity>
    <Value>90</Value>
    <CodeListQualifier>87</CodeListQualifier>
    <QuantityUnitOfMeasure>
      <Code>C38046</Code>
    </QuantityUnitOfMeasure>
  </Quantity>
  <DaysSupply>30</DaysSupply>
  <LastFillDate>
    <Date>2024-02-01</Date>
  </LastFillDate>
  <Substitutions>
    <Substitutions>0</Substitutions>
  </Substitutions>
  <Note>RefillsAuthorized:0</Note>
  <HistoryPrescriberOrderNumber>ASR181214A02068</HistoryPrescriberOrderNumber>
  <Pharmacy>
    <Identification>
      <NCPDPID>--</NCPDPID>
      <StateLicenseNumber>PHY48018</StateLicenseNumber>
      <NPI>--</NPI>
    </Identification>
    <BusinessName>STR OQZXQVLG #4151</BusinessName>
    <Address>
      <AddressLine1>4372 CJVU 451ZF RAMXLU</AddressLine1>
      <City>ANGIE</City>
      <StateProvince>LA</StateProvince>
      <PostalCode>70426</PostalCode>
    </Address>
  </Pharmacy>
  <Prescriber>
    <NonVeterinarian>
      <Identification>
        <DEANumber>RH5120442</DEANumber>
        <NPI>--</NPI>
      </Identification>
      <Names>
        <Name>
          <LastName>TFEOE, MCBVPNW Y IB</LastName>
          <FirstName>TFEOE, MCBVPNW Y IB</FirstName>
        </Name>
      </Names>
      <Address>
        <City>NCSFMJZ CVAFI</City>
      </Address>
    </NonVeterinarian>
  </Prescriber>

```

```

    <HistorySource>
      <Source>
        <SourceQualifier>Pharmacy</SourceQualifier>
      </Source>
      <SourceReference>0151349302</SourceReference>
      <FillNumber>00</FillNumber>
      <PaymentType>4</PaymentType>
    </HistorySource>
    <OtherMedicationDates>
      <OtherMedicationDate>
        <Date>2024-02-02</Date>
      </OtherMedicationDate>
      <OtherMedicationDateQualifier>SoldDate</OtherMedicationDateQualifier>
    </OtherMedicationDates>
    <Extension name="Daily MME"
url="https://cures.doj.ca.gov/extensions/prescriptions/dailymme">
      <Decimal>120.0</Decimal>
    </Extension>
    <Extension name="Total MME"
url="https://cures.doj.ca.gov/extensions/prescriptions/totalmme">
      <Decimal>3600.0</Decimal>
    </Extension>
    <Extension name="Originating State"
url="https://cures.doj.ca.gov/extensions/prescriptions/originatingstate">
      <String>California</String>
    </Extension>
  </MedicationDispensed>
  <RequestedDates>
    <StartDate>
      <Date>2024-01-06</Date>
    </StartDate>
    <EndDate>
      <Date>2024-09-06</Date>
    </EndDate>
  </RequestedDates>
</RxHistoryResponse>
</Body>
</Message>

```

## 9.6 /iews/prescriptions: Response Error/Status Sample

This is the same as the sample responses in [/iews/patients section](#).

## 10 /IEWS/USERS-STATUS

### 10.1 /iews/users-status Overview

The `/iews/users-status` web service returns the CURES account status of a Prescriber, Non-DEA Practitioner, or Pharmacist. Additionally, the `/iews/users-status` web service returns the status of a Delegate-Authorizing User relationship.

Upon successful execution, this method should return an NCPDP Status message. If there is a failure, an NCPDP Error or Status message is returned with the associated error/status code, description code, and description (refer to [Status/Error Codes](#) for details). If the error is related to authentication or parsing the message, an HTTP error is returned.

### 10.2 /iews/users-status: Request Sample for Prescriber, Non-DEA Practitioner, and Pharmacist

```
<?xml version="1.0" encoding="UTF-8"?>
<Message DatatypesVersion="2023011" TransportVersion="2023011" TransactionVersion="2023011"
StructuresVersion="2023011" ECLVersion="2023011" TransactionDomain="SCRIPT"
xmlns:xsi="http://www.w3.org/2001/XMLSchema-instance">
  <Header>
    <To Qualifier="ZZZ">CURES</To>
    <From Qualifier="ZZZ">Company Location #123</From>
    <MessageID>USERS STATUS-V2023011-001</MessageID>
    <SentTime>2024-06-04T16:00:47Z</SentTime>
    <Security>
      <UsernameToken>
        <Username>Company</Username>
      </UsernameToken>
      <Sender>
        <SecondaryIdentification>Company Location #123</SecondaryIdentification>
      </Sender>
      <Receiver/>
    </Security>
    <SenderSoftware>
      <SenderSoftwareDeveloper>HIT Software Developer</SenderSoftwareDeveloper>
      <SenderSoftwareProduct>CURES IEWS Client</SenderSoftwareProduct>
      <SenderSoftwareVersionRelease>1.0</SenderSoftwareVersionRelease>
    </SenderSoftware>
  </Header>
  <Body>
    <Verify>
      <VerifyStatus>
        <Code>010</Code>
        <Description>S;8899;DOE;JOHN</Description>
      </VerifyStatus>
    </Verify>
  </Body>
</Message>
```

## 10.2.1 /IEWS/users-status: Request Sample for Delegate

```

<?xml version="1.0" encoding="UTF-8"?>
<Message DatatypesVersion="2023011" TransportVersion="2023011" TransactionVersion="2023011"
StructuresVersion="2023011" ECLVersion="2023011" TransactionDomain="SCRIPT"
xmlns:xsi="http://www.w3.org/2001/XMLSchema-instance">
  <Header>
    <To Qualifier="ZZZ">CURES</To>
    <From Qualifier="ZZZ">Company Location #123</From>
    <MessageID>USERS STATUS-V2023011-001</MessageID>
    <SentTime>2024-06-04T16:00:47Z</SentTime>
    <Security>
      <UsernameToken>
        <Username>Company</Username>
      </UsernameToken>
      <Sender>
        <SecondaryIdentification>Company Location #123</SecondaryIdentification>
      </Sender>
      <Receiver/>
    </Security>
    <SenderSoftware>
      <SenderSoftwareDeveloper>Software Developer</SenderSoftwareDeveloper>
      <SenderSoftwareProduct>CURES IEWS Client</SenderSoftwareProduct>
      <SenderSoftwareVersionRelease>1.0</SenderSoftwareVersionRelease>
    </SenderSoftware>
  </Header>
  <Body>
    <Verify>
      <VerifyStatus>
        <Code>010</Code>
        <Description>s;A127497;SMITH;GREGORY</Description>
        <Extension name="Delegate First Name"
url="https://cures.doj.ca.gov/extensions/userstatus/delegatefirstname">
          <String>Geno</String>
        </Extension>
        <Extension name="Delegate Last Name"
url="https://cures.doj.ca.gov/extensions/userstatus/delegatelastname">
          <String>Romano</String>
        </Extension>
      </VerifyStatus>
    </Verify>
  </Body>
</Message>

```

### 10.3 /iews/users-status: Response Sample for Prescriber, Non-DEA Practitioner, and Pharmacist Status

```
<?xml version="1.0" encoding="UTF-8" standalone="yes"?>
<Message DatatypesVersion="20230115" TransportVersion="20230115" TransactionDomain="SCRIPT"
TransactionVersion="20230115" StructuresVersion="20230115" ECLVersion="20230115">
  <Header>
    <To Qualifier="ZZZ">Company Location #123</To>
    <From Qualifier="ZZZ">CURES</From>
    <MessageID>84c8b76b-6c62-4349-99ff-75b568b9b99</MessageID>
    <RelatesToMessageID>USERS STATUS-V2023011-001</RelatesToMessageID>
    <SentTime>2024-09-06T15:54:38.701-07:00</SentTime>
    <SenderSoftware>
      <SenderSoftwareDeveloper>CURES</SenderSoftwareDeveloper>
      <SenderSoftwareProduct>CURES</SenderSoftwareProduct>
      <SenderSoftwareVersionRelease>1.0</SenderSoftwareVersionRelease>
    </SenderSoftware>
  </Header>
  <Body>
    <Status>
      <Code>000</Code>
      <DescriptionCode>134</DescriptionCode>
      <Description>Active status, user has access.</Description>
    </Status>
  </Body>
</Message>
```

#### 10.3.1 /iews/users-status: Response Sample for Delegate-Authorizing User Relationship Status

```
<?xml version="1.0" encoding="UTF-8" standalone="yes"?>
<Message DatatypesVersion="20230115" TransportVersion="20230115" TransactionDomain="SCRIPT"
TransactionVersion="20230115" StructuresVersion="20230115" ECLVersion="20230115">
  <Header>
    <To Qualifier="ZZZ">Company Location #123</To>
    <From Qualifier="ZZZ">CURES</From>
    <MessageID>4872baf3-d843-4865-ace9-e7eb051d5e7</MessageID>
    <RelatesToMessageID>USERS STATUS-V2023011-001</RelatesToMessageID>
    <SentTime>2024-09-17T14:19:37.051-07:00</SentTime>
    <SenderSoftware>
      <SenderSoftwareDeveloper>CURES</SenderSoftwareDeveloper>
      <SenderSoftwareProduct>CURES</SenderSoftwareProduct>
      <SenderSoftwareVersionRelease>1.0</SenderSoftwareVersionRelease>
    </SenderSoftware>
  </Header>
  <Body>
    <Status>
      <Code>010</Code>
      <DescriptionCode>134</DescriptionCode>
```

```

        <Description>There is no active authorizing user-delegate relationship.</Description>
    </Status>
</Body>
</Message>

```

## 10.4 /iews/users-status: Response Error Sample

This is the same as the sample response in the [/iews/patients section](#).

# 11 /IEWS/ENTITY-STATUS

## 11.1 /iews/entity-status Overview

The `/iews/entity-status` web service returns the HIT system's account status. Upon successful execution, this method should return an NCPDP Status message. If there is a failure, an NCPDP Error or Status message is returned with the associated error/status code, description code, and description (refer to [Status/Error Codes](#) for details). If the error is related to authentication or parsing the message, an HTTP error is returned.

## 11.2 /iews/entity-status: Request Sample

```

<?xml version="1.0" encoding="UTF-8"?>
<Message DatatypesVersion="2023011" TransportVersion="2023011" TransactionVersion="2023011"
StructuresVersion="2023011" ECLVersion="2023011" TransactionDomain="SCRIPT"
xmlns:xsi="http://www.w3.org/2001/XMLSchema-instance">
  <Header>
    <To Qualifier="ZZZ">CURES</To>
    <From Qualifier="ZZZ">Company Location #123</From>
    <MessageID>CHECK-ENTITY-STATUS-V2023011-001</MessageID>
    <SentTime>2024-06-04T16:00:47Z</SentTime>
    <Security>
      <UsernameToken>
        <Username>Company</Username>
      </UsernameToken>
      <Sender>
        <SecondaryIdentification>Company Location #123</SecondaryIdentification>
      </Sender>
      <Receiver/>
    </Security>
    <SenderSoftware>
      <SenderSoftwareDeveloper>HIT Software Developer</SenderSoftwareDeveloper>
      <SenderSoftwareProduct>CURES IEWS Client Name</SenderSoftwareProduct>
      <SenderSoftwareVersionRelease>1.0</SenderSoftwareVersionRelease>
    </SenderSoftware>
  </Header>
  <Body>
    <Verify>
      <VerifyStatus>

```

```

        <Code>010</Code>
        <Description>REQUEST ENTITY STATUS</Description>
    </VerifyStatus>
</Verify>
</Body>
</Message>

```

### 11.3 /iews/entity-status: Response Sample

```

<?xml version="1.0" encoding="UTF-8" standalone="yes"?>
<Message DatatypesVersion="20230115" TransportVersion="20230115" TransactionDomain="SCRIPT"
TransactionVersion="20230115" StructuresVersion="20230115" ECLVersion="20230115">
  <Header>
    <To Qualifier="ZZZ">Company Location #123</To>
    <From Qualifier="ZZZ">CURES</From>
    <MessageID>32441bd1-63af-45bd-b8c4-5157be13f5b</MessageID>
    <RelatesToMessageID>CHECK ENTITY-STATUS-V2023011-001</RelatesToMessageID>
    <SentTime>2024-09-05T15:32:26.797-07:00</SentTime>
    <SenderSoftware>
      <SenderSoftwareDeveloper>CURES</SenderSoftwareDeveloper>
      <SenderSoftwareProduct>CURES</SenderSoftwareProduct>
      <SenderSoftwareVersionRelease>1.0</SenderSoftwareVersionRelease>
    </SenderSoftware>
  </Header>
  <Body>
    <Status>
      <Code>000</Code>
      <DescriptionCode>008</DescriptionCode>
      <Description>Requesting Entity account in good standing.</Description>
    </Status>
  </Body>
</Message>

```

### 11.4 /iews/entity-status: Response Error Sample

This is the same as the sample response in the [/iews/patients](#) section.

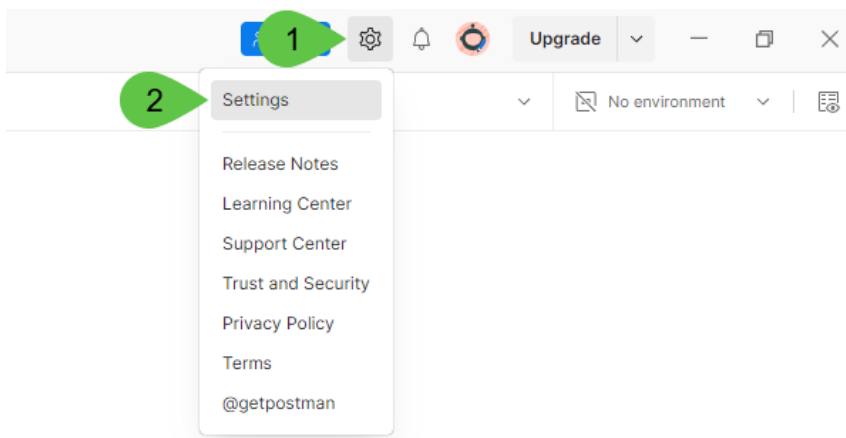


## 13 TESTING

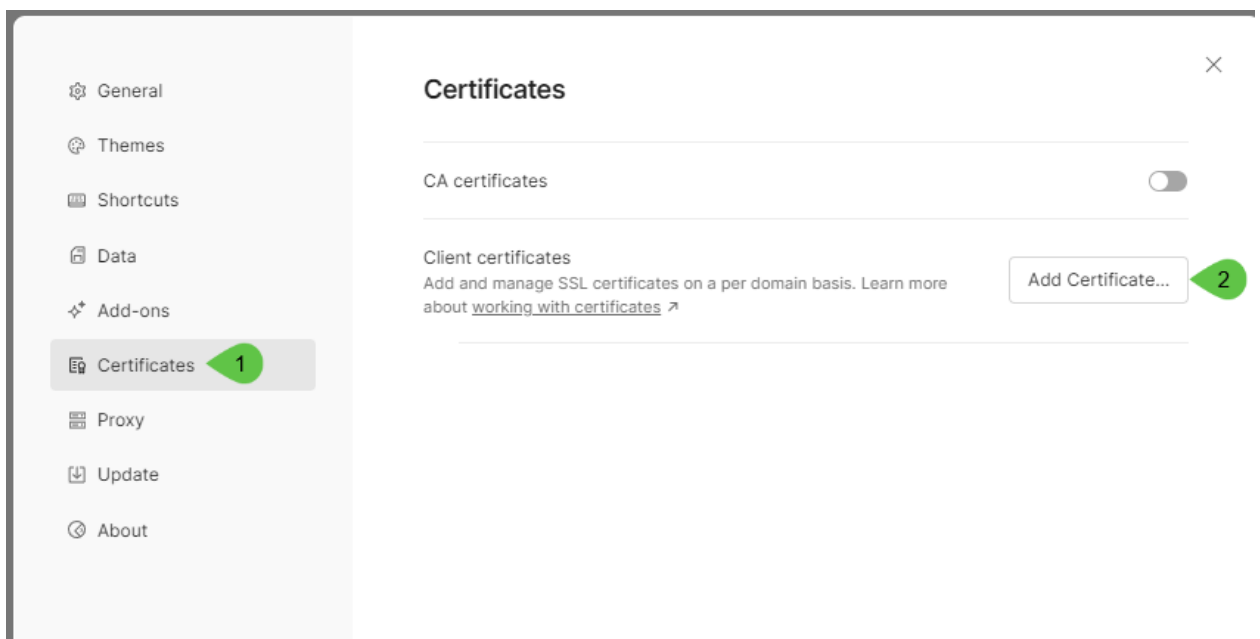
Prior to using CURES IEWS, HIT systems will complete two phases of testing. The first phase will be focused on connectivity. HIT systems will provide client certificates to CURES and configure their system with associated client certificates. To verify the certificates are working properly, HIT systems can conduct a connection/authentication test with CURES.

Postman software, one of the tools that you can use for testing, is a free software that you may download from <https://www.postman.com/downloads/>. Here is the example for the setup and test.

1. Open Postman application and click the **Settings** icon and click **Settings**



2. Select **Certificates** from the left Menu and click the **Add Certificate...** button



3. Complete the following fields:

- a. Host
- b. Upload the PFX file
- c. Passphrase

Click the **Add** button after all the fields have been completed

The screenshot shows the 'Add certificate' dialog box in Postman. The dialog has a sidebar on the left with menu items: General, Themes, Shortcuts, Data, Add-ons, Certificates (highlighted), Proxy, Update, and About. The main area is titled 'Add certificate' and contains the following fields:

- Host (required)**: A text input field containing 'https:// getpostman.com' and a port input field containing '443'. A green callout box with the number '1' points to the Host field.
- CRT file**: A 'Select File' button.
- KEY file**: A 'Select File' button.
- PFX file**: A 'Select File' button. A green callout box with the number '2' points to this button.
- Passphrase**: A text input field. A green callout box with the number '3' points to this field.

At the bottom of the dialog, there are two buttons: 'Add' (highlighted in orange) and 'Cancel'. A green callout box with the number '4' points to the 'Add' button. A link 'Learn more about working with certificates' is also present at the bottom right.

Once the certificates are established, requests can be sent to CURES IEWS.

After connectivity has been established, the HIT system can move on to functional testing. Each HIT system will be given test cases and a list of test Prescribers, Non-DEA Practitioner, Pharmacists, and Delegate accounts to use for testing. The HIT system can use the test accounts to test all the REST endpoints. The HIT system must execute each test case provided and provide the request and response XMLs for each test case. The test cases will be submitted to DOJ for review before Production access is granted.

## 14 APPENDIX - CODED VALUES

### 14.1 Payment Type Codes

Code	Description
1	Private Pay
2	Medicaid
3	Medicare
4	Commercial Insurance
5	Military Installations and VA
6	Worker's Compensation
7	Indian Nations
99	Other

### 14.2 Interstate Response Codes

Code	Description
DJ	No Data – There is a response indicating that no data was found for the search criteria provided in the search request.
DK	Prescription Data
DL	Disallowed – There was a permission problem of some type performing this request against this destination.
DM	Error- This response indicates a processing error in performing this request.