

DISMANTLING THE PRESCHOOL-TO- PRISON PIPELINE

Tasha Henneman, EdD

Director, Black Leadership Council

Chief of Policy & Gov Affairs, PRC

AB3121 Task Force Hearing

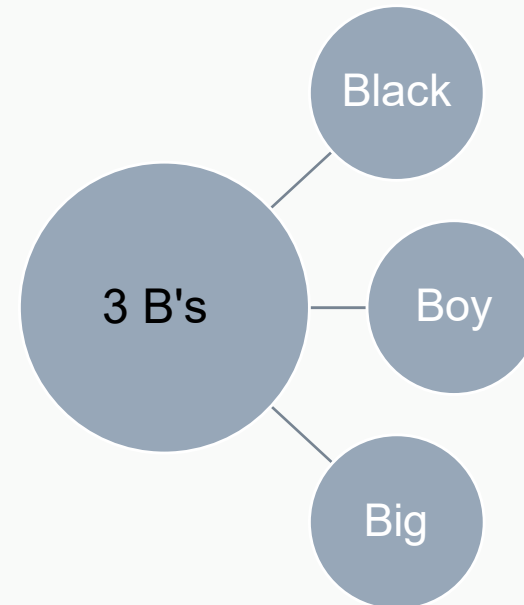
March 30, 2022



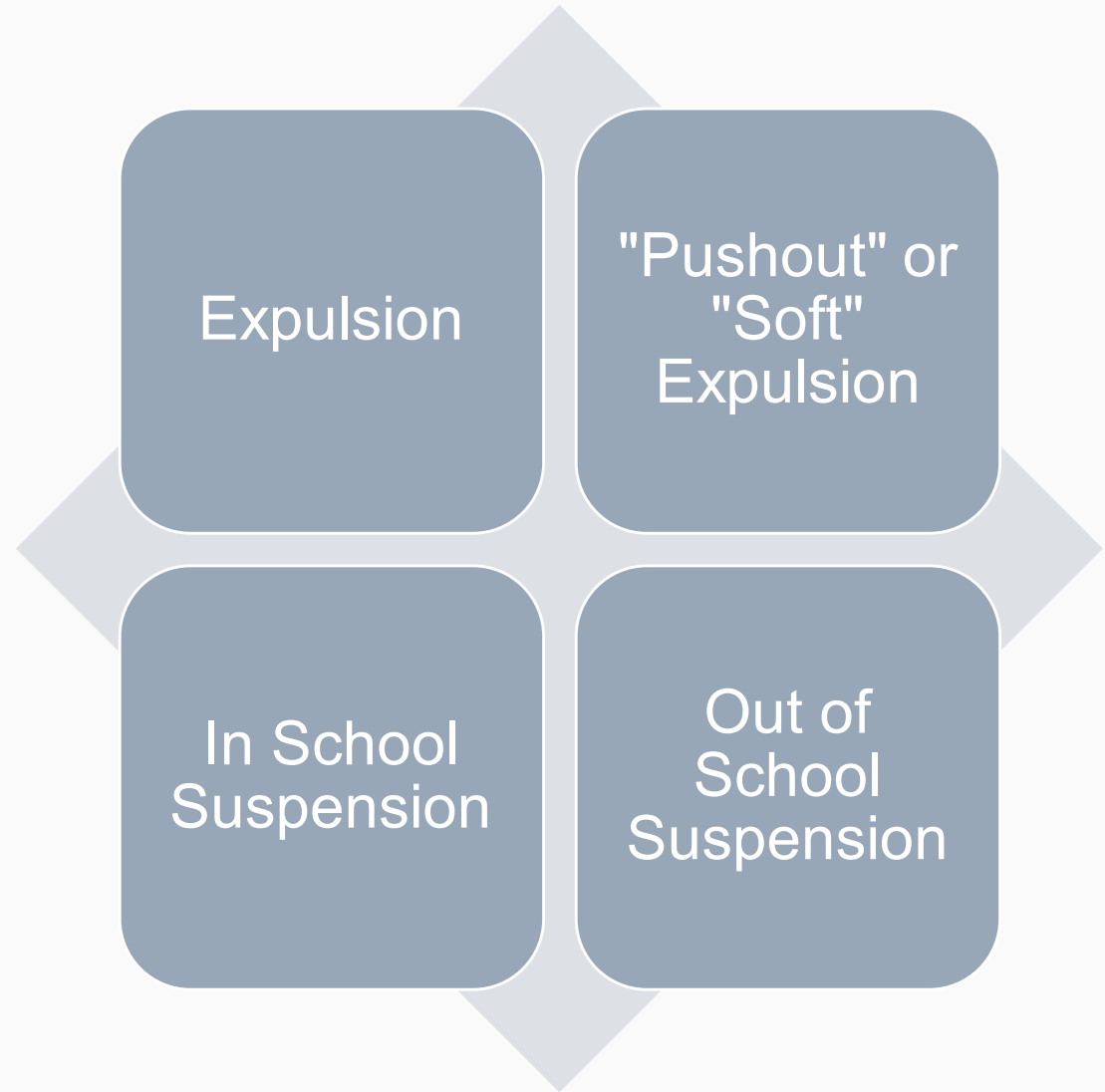
The Problem

Preschool expulsions are happening at a rate 3x's more frequently than k-12th grades

Gilliam, W. (2005). Prekindergarteners left behind: Expulsion rates in state prekindergarten systems. New Haven, CT: Yale University Press.



Expulsions & Suspensions Defined





EXPULSIONS & SUSPENSIONS: BY THE NUMBERS

4-yr-olds 50% x likely than 3-yr olds

Boys represent 54% of preschoolers, but 78% of suspensions

Black preschoolers are 3.6x as likely to be suspended as white peers

Black children are 5 times as likely to be expelled as Asian peers

Black children represent 19% of preschoolers but 47% of suspensions

A) 250

B) 75

C) 185

WHAT IS THE NATIONAL DAILY
AVERAGE OF PRESCHOOL
EXPULSIONS OR
SUSPENSIONS?

A) 250

B) 75

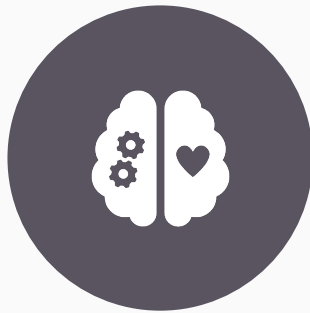
C) 185

WHAT IS THE NATIONAL DAILY
AVERAGE OF PRESCHOOL
EXPULSIONS OR
SUSPENSIONS?

CONCEPTUAL FRAMEWORK



HIGH STAKES ACCOUNTABILITY
MOVEMENT | K-READINESS



NEUROBIOLOGICAL FACTORS



ECE WORKFORCE FACTORS



HOME LIFE

A SNAPSHOT OF ECE EXPERIENCES

Child 1: 9 Programs
(1-5yrs)

Child 2: 6 Programs
(1-3yrs)

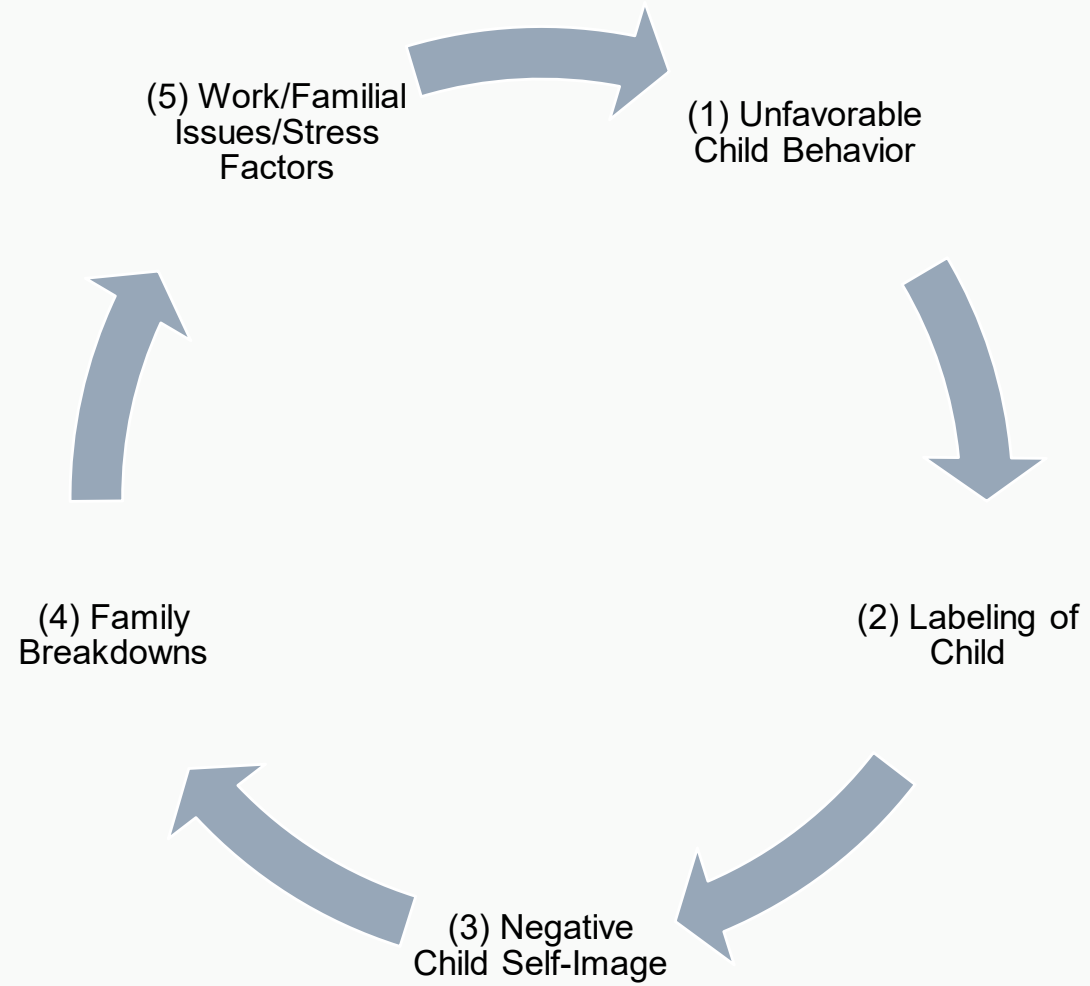
Child 3: 10
Programs (8months
– 5 yrs)

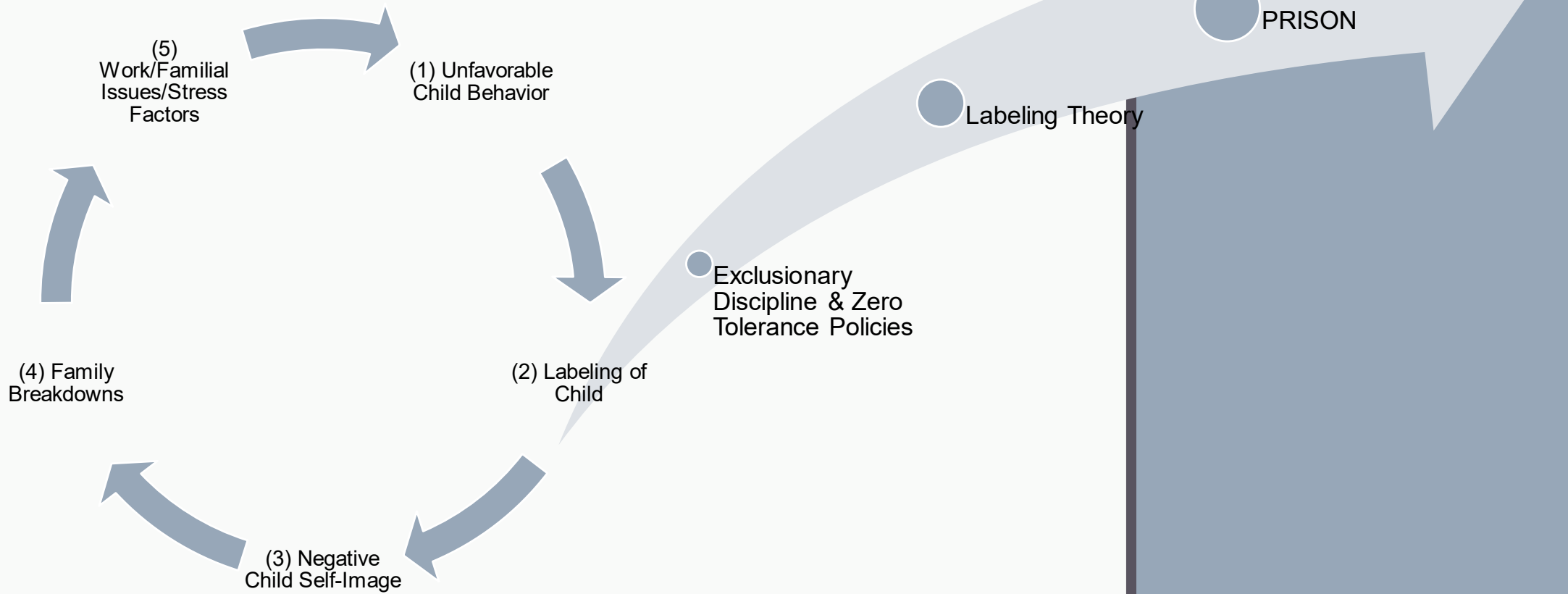
Child 4: Expelled at
2yrs old for biting

Child 5 & 6: 6
Programs (2-6yrs)



SULTAN'S STORY





The Pipeline



HISTORICAL REVIEW OF EDUCATION [1619 – 1860 & BEYOND]

- Formal Schools
- Sabbath Schools
- Clandestine “Midnight” Schools
- Brown vs. Board of Education
- My Brother’s Keeper



CALIFORNIA PROGRESS

Recommendations

Invest in

Invest in Early Care & Education (ECE), including the workforce (wages etc)

Expand

Expand the ECE landscape to include licensed FCC's and licensed exempt care providers

Fund

Fund mental health consultation

Recommendations Continued

Collect

Collect data on ECE expulsions - Update the CA dashboard to include data from all CDC's to help identify areas of improvement to ensure accountability for a comprehensive, high quality early childhood education system statewide

Eliminate

Eliminate zero tolerance policies & harsh discipline tactics

Require

Require more training on implicit bias, culturally responsive pedagogy/teaching, cultural competency & trauma informed care

Recommendations Continued

Eliminate

Eliminate Law Enforcement on school campuses

Involve

Involve fathers and make ECE environments more father friendly

Recruit

Recruit and retain a more diverse ECE workforce (ie apprenticeship pipelines)

Recommendations Continued

Partner

Partner with families & deploy family engagement strategies

Implement

Implement trauma informed, positive behavior and restorative justice practices

Mandate

Mandate lower teacher-student ratios in early childhood preschool programs.





THANK YOU

Dr. Tasha Henneman

Tasha.henneman@prcsf.org